



MILE



Odessa Road, London NW10

£625,000 Leasehold

Introducing the most picturesque garden apartment you are likely to see this spring. Welcome to this charming garden apartment located on a peaceful residential street, blending classic appeal with modern comforts. This delightful home features its own entrance and offers two spacious double bedrooms, perfect for relaxation. The cosy reception room boasts lovely bay windows, flooding the space with natural light and highlighting its original features. The kitchen is a dream, fully fitted and ideal for both cooking and dining. Step outside to enjoy the private garden, a great spot for entertaining guests or simply unwinding. Tucked away at the back of the garden is a convenient home office space, providing a quiet area for work or hobbies. With the bonus of a long lease, Odessa Road offers a fantastic place to call home. Don't miss out on the opportunity to make this lovely property yours.

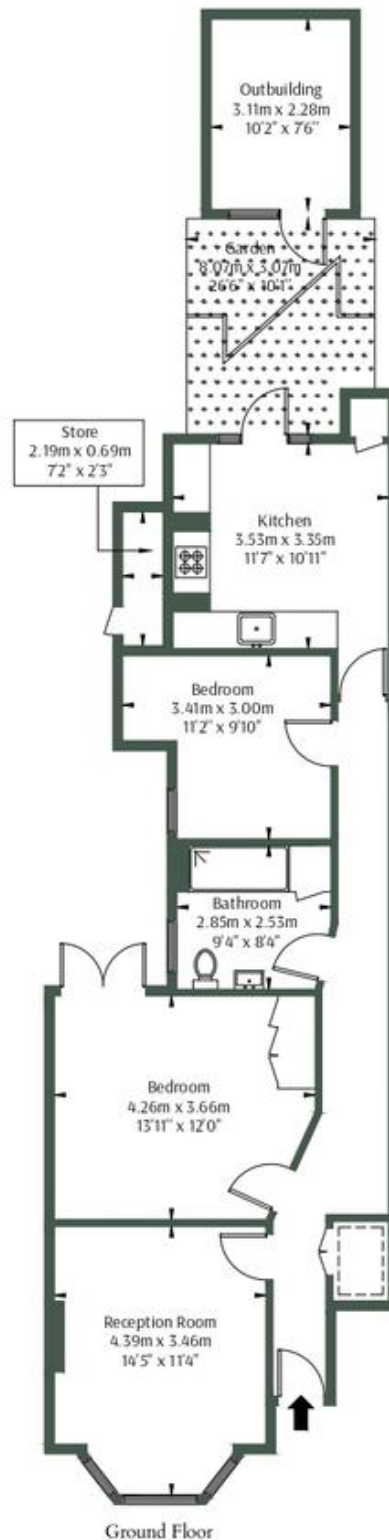
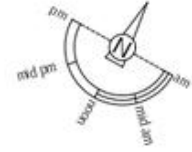
- Victorian conversion
- Two bedrooms
- Private garden
- Own Entrance
- 755 sq ft
- Home office
- Fantastic location
- Excellent condition
- Many original features
- Close to shops and transports

Odessa Road, NW10 5YH

Approx Gross Internal Area = 70.1 sq.m / 755 sq.ft

Restricted head height = 1.2 sq.m / 13 sq.ft

Total = 71.3 sq.m / 767 sq.ft



The Floor plan is not to scale and measurements and areas shown are approximate and therefore should be used for

MONEY LAUNDERING REGULATIONS 2003: Intending purchasers will be asked to produce identification documentation at a later stage and we would ask for your co-operation in order that there will be no delay in agreeing the sale.

General: While we endeavour to make our sales particulars fair, accurate and reliable, they are only a general guide to the property and, accordingly, if there is any point which is of particular importance to you, please contact the office and we will be pleased to check the position for you, especially if you are contemplating travelling some distance to view the property.

Measurements: These approximate room sizes are only intended as general guidance. You must verify the dimensions carefully before ordering carpets or any built-in furniture.

Services: Please note we have not tested the services or any of the equipment or appliances in this property, accordingly we strongly advise prospective buyers to commission their own survey or service reports before finalising their offer to purchase.