

10 Fairway Lakes Village, Caldecott Hall

£275,000 Leasehold

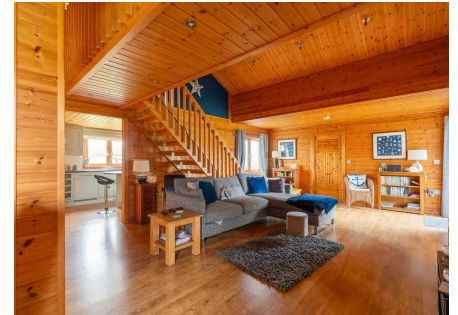
Experience luxury living in this incredible Lodge at Fairway Lakes Village. It promises a comfortable retreat to escape the everyday busy lifestyle, with the option to enjoy all year round. It sits on a beautiful landscape, in the village of Fritton, in close proximity to all local amenities and natural surroundings. Its fantastic design benefits from a sitting room, kitchen, utility room, two double bedrooms with ensuites, a mezzanine level offering an additional two bedrooms and a bathroom with sauna. With the addition of a balcony, decked terrace and off-road parking.

Tenure: Leasehold

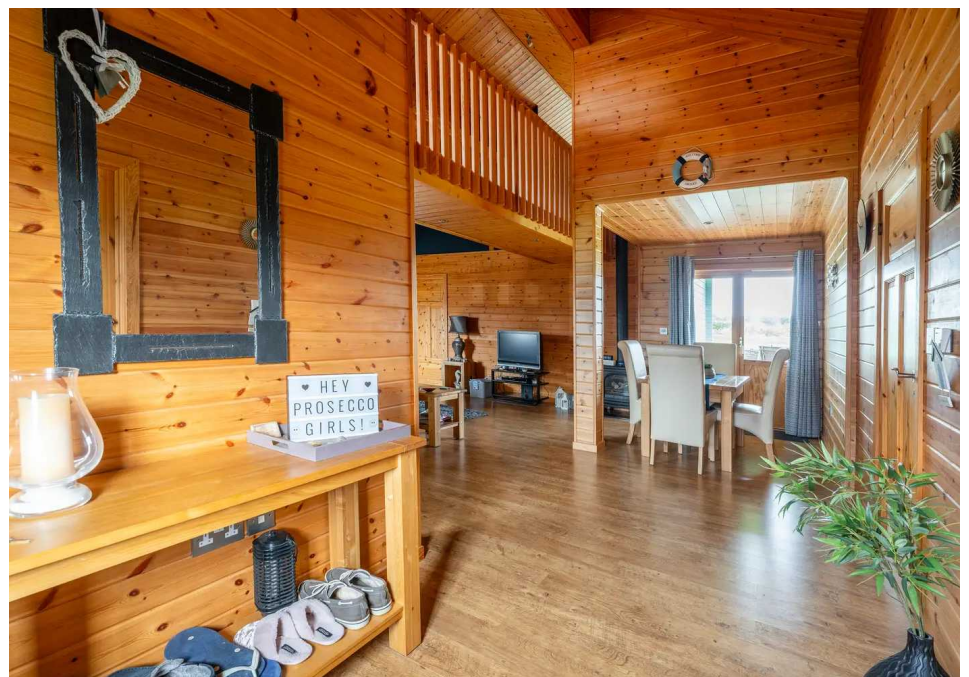
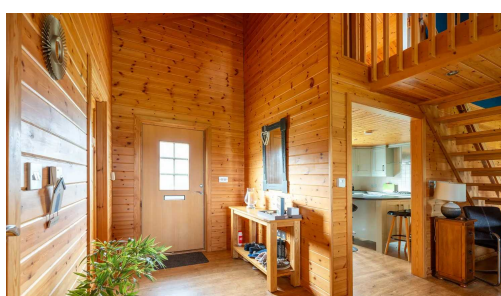
Experience luxury living in this incredible Lodge at Fairway Lakes Village. It promises a comfortable retreat to escape the everyday busy lifestyle, with the option to enjoy all year round. It sits on a beautiful landscape, in the village of Fritton, in close proximity to all local amenities and natural surroundings. Its fantastic design benefits from a sitting room, kitchen, utility room, two double bedrooms with ensuites, a mezzanine level offering an additional two bedrooms and a bathroom with sauna. With the addition of a balcony, decked terrace and off-road parking.

LOCATION

Fritton is a village in Norfolk, situated 5 miles south-west of Great Yarmouth and 6 miles northwest of Lowestoft. It is only 11 miles south of the city of Norwich and is home to a 70 acre common surrounded by old oak trees. Fritton Church, St Catherine, has a round tower and a fine rood screen that dates back to the 1500's. There are schools, pubs, beautiful walks and hospital/doctors nearby. Fritton Lake is the heart of the village and is a family run private holiday club which offers adventures in nature including wild swimming, trail running, yoga, great local food



Experience luxury living in this incredible Lodge at Fairway Lakes Village. It promises a comfortable retreat to escape the everyday busy lifestyle, with the option to enjoy all year round. It sits on a beautiful landscape, in the village of Fritton, in close proximity to all local amenities and natural surroundings. Its fantastic design benefits from a sitting room, kitchen, utility room, two double bedrooms with ensuites, a mezzanine level offering an additional two bedrooms and a bathroom with sauna. With the addition of a balcony, decked terrace and off-road parking.



Experience luxury living in this incredible Lodge at Fairway Lakes Village. It promises a comfortable retreat to escape the everyday busy lifestyle, with the option to enjoy all year round. It sits on a beautiful landscape, in the village of Fritton, in close proximity to all local amenities and natural surroundings. Its fantastic design benefits from a sitting room, kitchen, utility room, two double bedrooms with ensuites, a mezzanine level offering an additional two bedrooms and a bathroom with sauna. With the addition of a balcony, decked terrace and off-road parking.

LOCATION

Fritton is a village in Norfolk, situated 5 miles south-west of Great Yarmouth and 6 miles northwest of Lowestoft. It is only 11 miles south of the city of Norwich and is home to a 70 acre common surrounded by old oak trees. Fritton Church, St Catherine, has a round tower and a fine rood screen that dates back to the 1500's. There are schools, pubs, beautiful walks and hospital/doctors nearby. Fritton Lake is the heart of the village and is a family run private holiday club which offers adventures in nature including wild swimming, trail running, yoga, great local food and a positive life-changing impact on the environment.

FAIRWAY LAKES VILLAGE

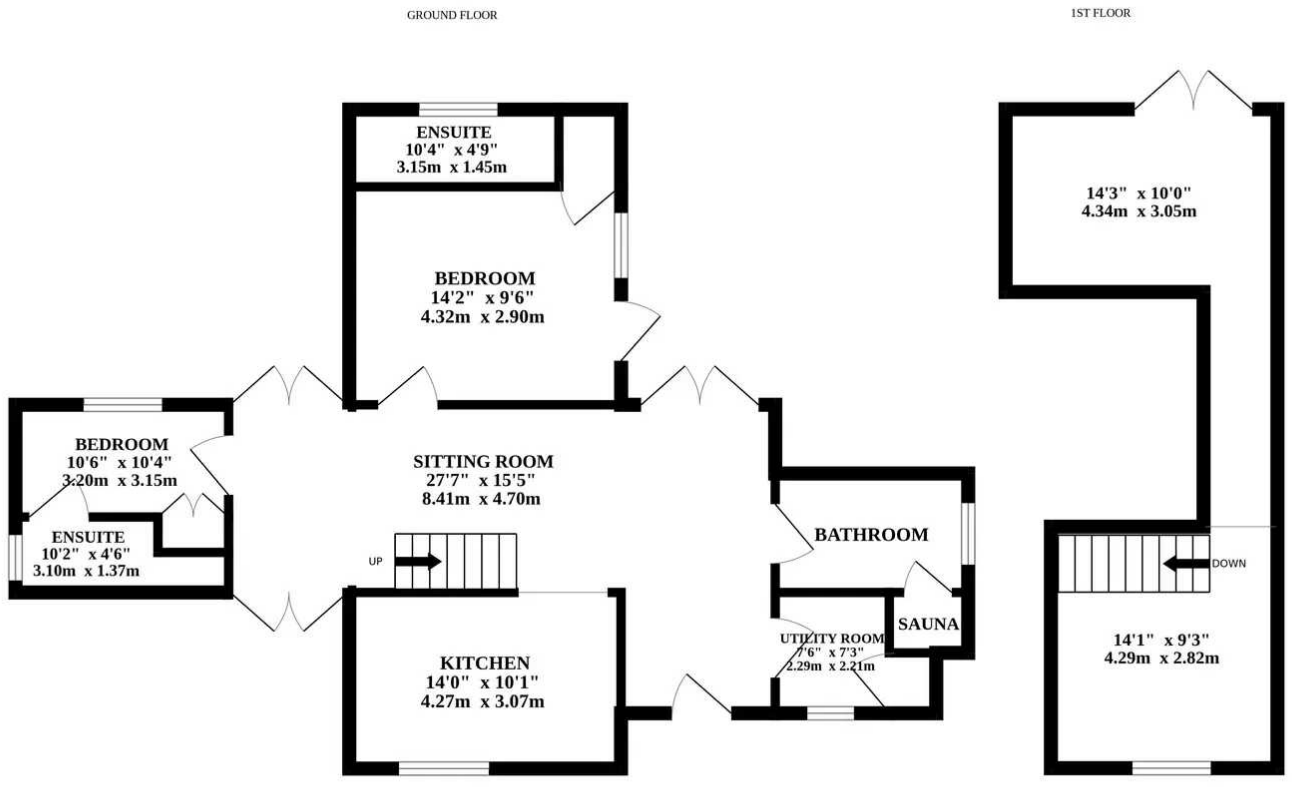
Upon arrival to this luxury lodge at Fairway Lakes Village, is a shingle driveway providing off-road parking for all family members and visitors. The pathway leads up to the easily accessible ramp access, ensuring convenience for all guests. This wonderful first impression sets the stage for a delightful stay amidst the serene surroundings of Fairway Lakes Village.

Step inside where you are instantly greeted by an incredible open-plan living area, ensuring effortless interaction with family and friends. It's where you can showcase comfortable furniture and a dining set-up, to encourage social gatherings. With the presence of a log burner, creating a warm ambiance. The well-equipped kitchen is fitted with units and integrated appliances to enhance your cooking experience, with a focal point of this central island. Complimented by a utility room, for your additional storage and laundry essentials. The ground floor connects to the decked terrace, for your outdoor furniture during the summer months.

The ground floor benefits from two double bedrooms, designed to offer you relaxation and privacy. Each bedroom is thoughtfully completed with built-in storage and an ensuite, ensuring convenience and comfort during your stay. The main bathroom comprises a four-piece suite, with the luxury feature of a sauna, accommodating all family members and visitors.

Ascending the staircase to the mezzanine level, presenting a versatile space that can be tailored to your desires. Whether you envision more reception space or additional bedrooms, this floor can accommodate your needs with its adaptability. The balcony





Whilst every attempt has been made to ensure the accuracy of the floorplan contained here, measurements of doors, windows, rooms and any other items are approximate and no responsibility is taken for any error, omission or mis-statement. This plan is for illustrative purposes only and should be used as such by any prospective purchaser. The services, systems and appliances shown have not been tested and no guarantee as to their operability or efficiency can be given.
 Made with Metropix ©2024

You can include any text here. The text can be modified upon generating your brochure.

You can include any text here. The text can be modified upon generating your brochure.

