



THE
TADLOW

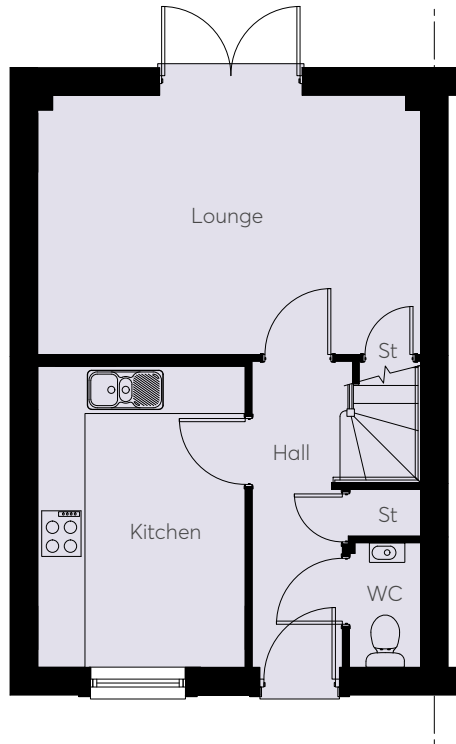
A four bedroom semi-detached
townhouse



BLUEBELL
HOMES

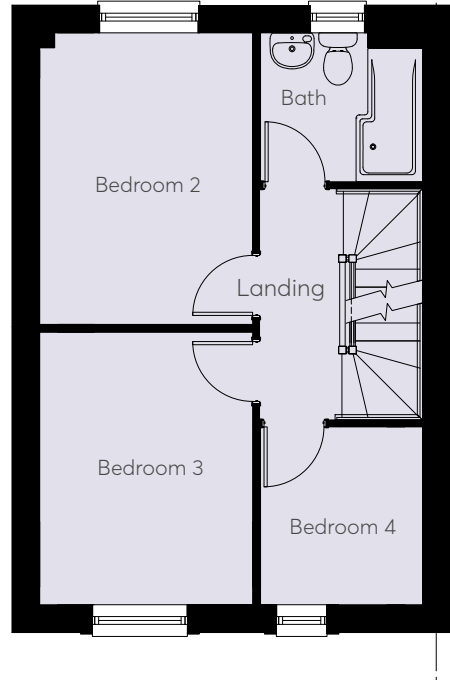
THE TADLOW

A four bedroom semi-detached townhouse



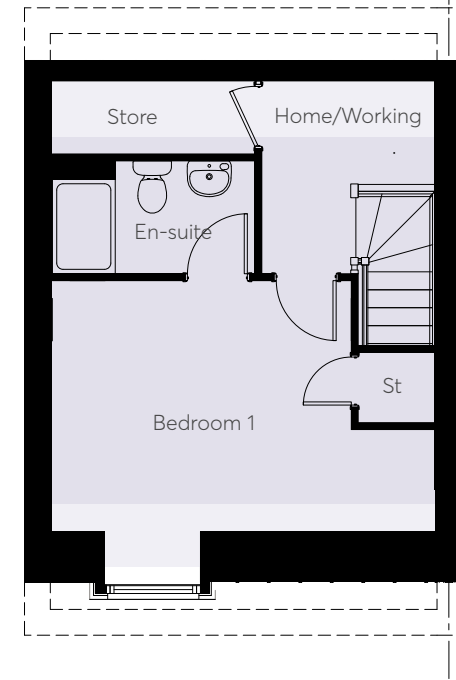
Ground Floor

Kitchen	3.83m x 2.64m	12'7" x 8'8"
Lounge	4.87m x 3.30m	16'0" x 10'10"



First Floor

Bedroom 2	3.71m x 2.71m	12'2" x 8'11"
Bedroom 3	3.46m x 2.71m	11'4" x 8'11"
Bedroom 4	2.26m x 2.06m	7'5" x 6'9"



Second Floor

Bedroom 1	4.87m x 2.84m	16'0" x 9'4"
-----------	---------------	--------------

 Reduced ceiling height

**CONSUMER
CODE FOR
HOME BUILDERS**

www.consumercode.co.uk

These images are designed to give an impression of the development and our housetypes - they may not reflect a specific plot and do not form part of any contract. Final finishes, landscaping and detail will vary. This information has been provided in good faith, however all layouts and measurements are approximate only. Dimensions are taken to the maximum. Some house types include areas of reduced headroom. Bathroom and kitchen layouts are indicative only and designs may change due to our process of continuous product development. Images used in marketing materials may be computer generated or photography of previous developments.



**BLUEBELL
HOMES**