




Andrew Pearce
PINNER

HEREFORD GARDENS, PINNER, MIDDLESEX, HA5 5JR £850,000

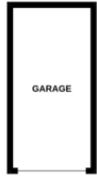


A spacious four bedroom bungalow situated in this quiet location close to Pinner Village. The property comprises of; FOUR double bedrooms, THREE bathrooms , LARGE kitchen diner and a SPACIOUS lounge.

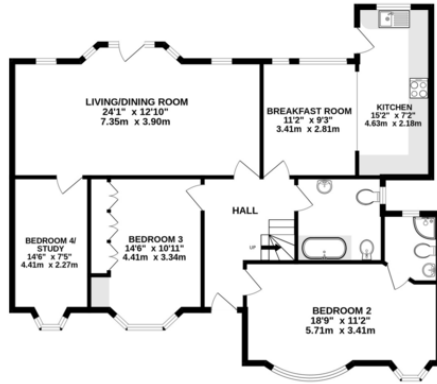
Additional benefits are, gas central heating, double glazing and a LOVELY garden to rear. CHAIN FREE



OUTBUILDING
129 sq.ft. (12.0 sq.m.) approx.



GROUND FLOOR
1338 sq.ft. (123.6 sq.m.) approx.



1ST FLOOR
463 sq.ft. (42.8 sq.m.) approx.



TOTAL FLOOR AREA: 1714 sq.ft. (159.3 sq.m.) approx.

Whilst every attempt has been made to ensure the accuracy of the floorplan contained here, measurements of doors, windows, rooms and any other items are approximate and no responsibility is taken for any error, omission or mis-statement. This plan is for illustrative purposes only and should be used as such by any prospective purchaser. The services, systems and appliances shown have not been tested and no guarantee as to their operability or efficiency can be given.
Made with Metroplan ©2024



