

For Rent



People Make Places



Sackville Street, Mayfair W1

2 bedrooms | 1,238 sq ft

Offers in excess of £1,380 pw





A beautifully presented two bedroom two bathroom apartment to rent in the heart of Mayfair. Located on the sixth floor of a modern development offering fantastic views across London. The apartment offers a spacious, open plan living space opening out onto two balconies.

What you need to know

- Two double bedrooms
- Two bathrooms
- Two private balconies
- Wooden floors
- Recently repainted and refreshed
- Furnished
- Available immediately
- 6th floor (with lift)
- Moments from Green Park
- Fantastic transport links across London



Sackville Street, Mayfair W1



Overview

The development which is a mix of offices with apartments at penthouse level, is located between Green Park and Piccadilly Circus tube stations offering all the benefits of the West End. The property has air conditioning throughout and is furnished to a good standard.

The landlord offers a 1-3 tenancy, with mutual rolling break clauses as agreed. Westminster City Council tax band G. The property is available immediately on a furnished basis (not including kitchen pack).







Sackville Street, Mayfair W1

People Make Places

London is collection of inspiring urban villages and one of the most exciting places in the world to live, work & play.

We work with both property owners and their occupiers, sharing the story of these vibrant neighbourhoods, conveying the unique soul & energy to future custodians, the people who'll keep them buzzing.

And unlike many real estate businesses we're not just about buildings, because streets & buildings don't make a neighbourhood.

We're about building relationships, because **people make places**.

MISINTERPRITATION ACT [COPYRIGHT] DISCLAIMER: Tavistock Bow Ltd for themselves and for the vendor(s) of this property whose agents thy are, given notice that: 1. These particulars do not constitute, not constitute any part of, an offer or contract. 2. None of the statements contained in these particulars as to the property are to be relied on as statements or representations of fact. 3. Any intending purchaser or lessee must satisfy themselves by inspection or otherwise as to the correctness of each of the statements contained in these particulars. 4. The vendor(s) or lessor(s) do not make or give and neither Tavistock Bow Ltd nor any person in their employment has any authority to make or give any representation or warranty whatever in relation to this property. Finance Act 1989, Unless otherwise stated all prices and rents are quote exclusive of VAT. Property Misrepresentation Act 1991; These details are believed to be correct at the time of compilation but may be subject to subsequent amendment.

Follow us:     @tavistockbow

Score	Energy rating	Current	Potential
92+	A		
81-91	B		
69-80	C		
55-68	D		
39-54	E	50 E	52 E
21-38	F		
1-20	G		

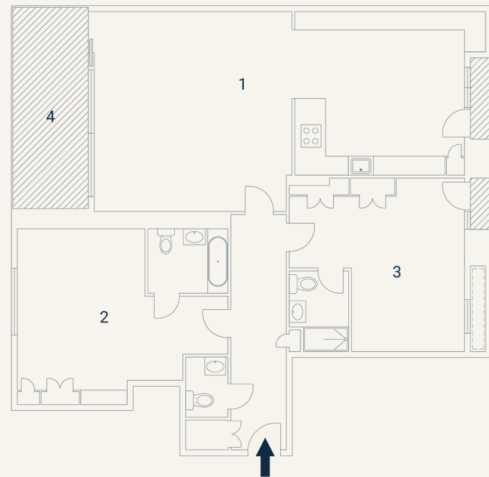
Sackville Street, W1

Approximate Gross Internal Area 115 sq m / 1238 sq ft

Excluding External Terrace & Balconies of 14 sq m / 150 sq ft

Sixth Floor

1 Living / Kitchen / Dining 10.34 x 5.74M 34'1" x 18'8"	2 Bedroom 5.63 x 4.60M 18'4" x 15'0"	3 Bedroom 4.89 x 4.69M 16'0" x 15'3"	5 Terrace 5.95 x 2.08M 19'5" x 6'8"
---	--	--	---



Floorplan produced for Tavistock Bow, illustration for identification purposes only and not to scale. All measurements are approximate and not to be relied upon.

tavistockbow

21 New Row, Covent Garden,
London, WC2N 4LE

t: 020 7477 2177
e: hello@tavistockbow.com
w: tavistockbow.com



Sackville Street, Mayfair W1