



Clarence Road | Windsor | SL4 5AP

£435,000

Hiltons Presents Brand New Luxury Living in Windsor!

Experience the pinnacle of modern elegance with our stunning new-build 2-bedroom, 2-bathroom luxury apartment in Windsor. Located in close proximity to Windsor Castle and the bustling shopping centres, this residence offers the perfect blend of convenience and sophistication.

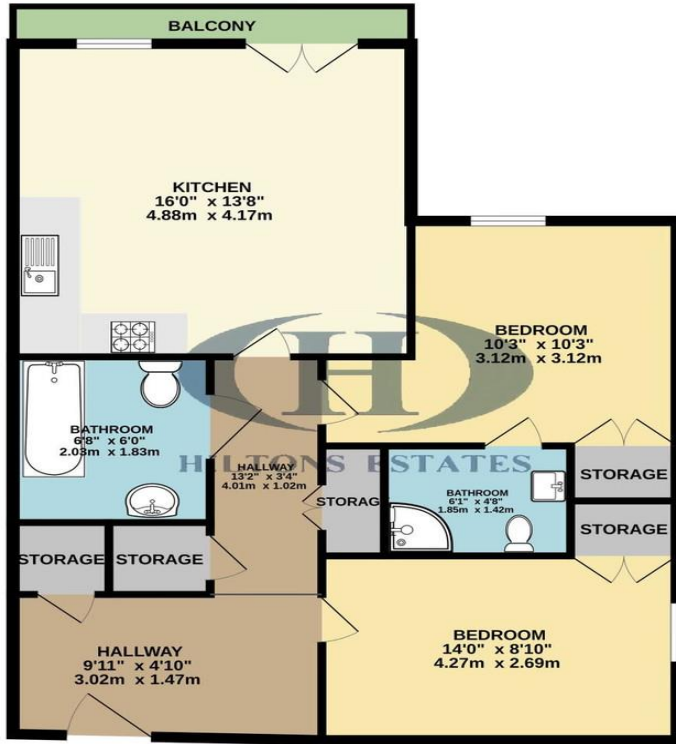
Indulge in the finest amenities and finishes, from sleek contemporary design to state-of-the-art appliances. With two spacious bedrooms and two luxurious bathrooms, this apartment provides the ultimate retreat in the heart of Windsor's vibrant community. As an exclusive incentive, we're offering free legal fees for the buyer, along with one complimentary parking space.

Don't miss your chance to be among the first to experience unparalleled luxury living in this prime Windsor location. Contact us today to reserve your new home and elevate your lifestyle to extraordinary heights.

- Luxurious 2-bed apartment near Windsor Castle and shopping centre
- Modern design with top-tier amenities and appliances
- Exclusive offer: Free legal fees and parking space
- Lease of 250years, minimal service charge and no ground rent
- Secure your spot in Windsor's newest luxury residence today!



GROUND FLOOR



Whilst every attempt has been made to ensure the accuracy of the floorplan contained here, measurements of doors, windows, rooms and any other items are approximate and no responsibility is taken for any error, omission or mis-statement. This plan is for illustrative purposes only and should be used as such by any prospective purchaser. The services, systems and appliances shown have not been tested and no guarantee as to their operability or efficiency can be given.
Made with Metrepro ©2024

Contact Details

137 Western Road
Southall
Middlesex
UB2 5HN

www.hiltons-estates.com
Harvin@hiltons-estates.com
02088679555

Score	Energy rating	Current	Potential
92+	A		
81-91	B	85 B	85 B
69-80	C		
55-68	D		
39-54	E		
21-38	F		
1-20	G		

Agents Note: Whilst every care has been taken to prepare these sales particulars, they are for guidance purposes only. All measurements are approximate are for general guidance purposes only and whilst every care has been taken to ensure their accuracy, they should not be relied upon and potential buyers are advised to recheck the measurements