



**76 Sheephouse Road, Maidenhead, Berkshire SL6 8HP**

**76 SHEEPHOUSE ROAD  
MAIDENHEAD  
BERKSHIRE SL6 8HP**

**GUIDE PRICE: £1,250,000  
FREEHOLD**

Situated in the sought-after River Area of Maidenhead and conveniently located for walks on the banks of the Thames near Boulters Lock which leads to the 19 acre Country Park at Taplow Riverside. A delightful four bedroom detached family house occupying a generous plot of approx. 0.24 of an acre which provides ample space to extend (STPP) and a great opportunity for someone to create their ideal home. **VIEWING HIGHLY RECOMMENDED.**

**\*RECEPTION HALL \*LARGE LIVING ROOM WITH FEATURE FIREPLACE \*DINING ROOM \*KITCHEN/BREAKFAST ROOM \*STUDY \*GYM/FAMILY ROOM (ANNEXE POTENTIAL) \*GROUND FLOOR BATHROOM \*FOUR GOOD SIZE BEDROOMS \*FAMILY BATHROOM \*DOUBLE GLAZING \*GAS HEATING \*DELIGHTFUL ENCLOSED REAR GARDEN PROVIDING AMPLE ROOM TO EXTEND (STPP) \*DRIVEWAY PARKING \*DOUBLE WIDTH GARAGE \*SOUGHT-AFTER LOCATION \*EPC RATING D \*COUNCIL TAX BAND G**

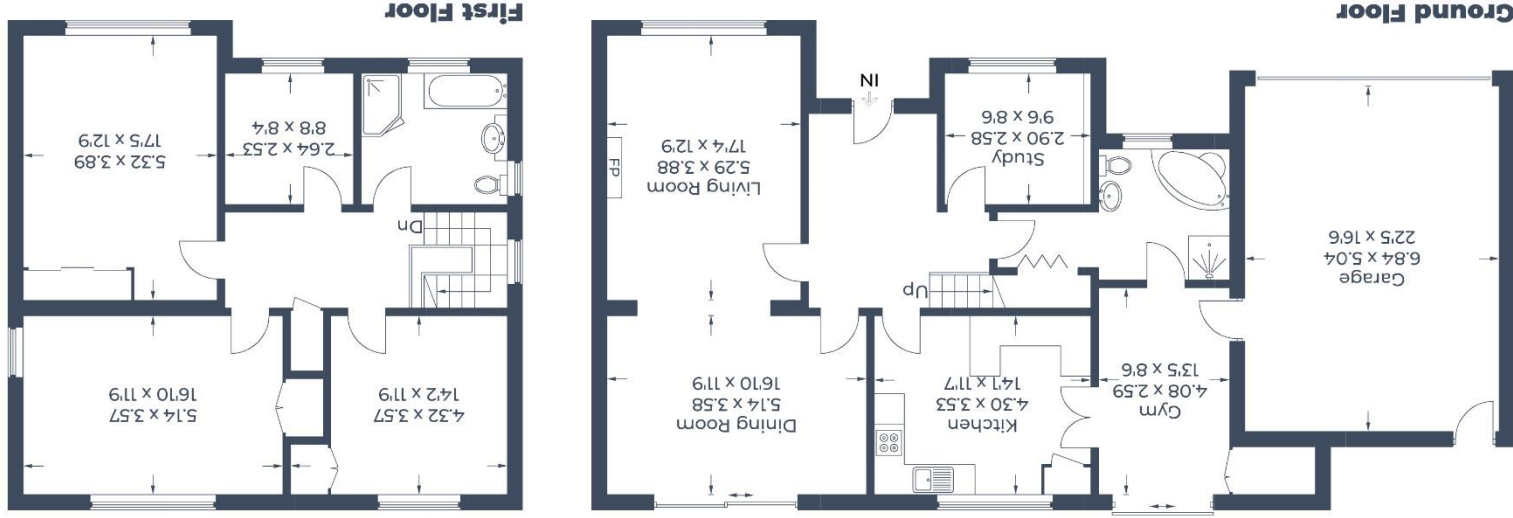






For clarification we wish to inform prospective purchasers that we have prepared these sales particulars as a general guide. We have not carried out a detailed survey nor tested the services, appliances and specific fittings. Room sizes should not be relied upon for carpets, furnishings and appliances. Whilst these particulars are believed to be correct their accuracy is not guaranteed and are given without responsibility. They do not form part of any contract.

Illustration for identification purposes only,  
 measurements are approximate, not to scale.  
 © CJ Property Marketing Produced for Braxton



Approximate Gross Internal Area  
 Ground Floor = 138.9 sq m / 1,495 sq ft  
 First Floor = 83.0 sq m / 893 sq ft  
 Total = 221.9 sq m / 2,388 sq ft

