

Jasmine Gardens, Hatfield - AL10 0BL

£350,000

MID TERRACE HOUSE • TWO BEDROOMS • MODERN KITCHEN • LIVING ROOM WITH STORAGE • SUN ROOM • LOW MAINTENANCE GARDEN • ALLOCATED PARKING • CLOSE TO AMENITIES • FREEHOLD • EPC RATING - AWAITING

KINGS

Sales Lettings Management

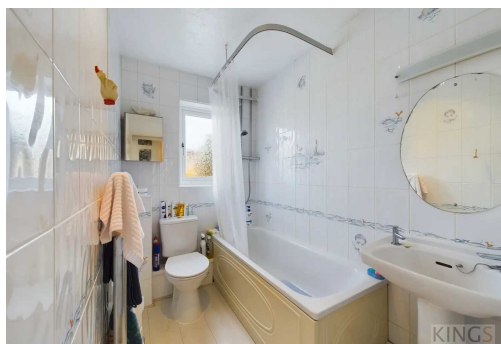


Situated in a quiet cul-de-sac near many shops and amenities including Hatfield Business Park, The Galleria, Town Centre and Train Station (22 minutes to Kings Cross) is this immaculately presented two bedroom mid terrace house. The ground floor comprises an inviting entrance with storage, bright and airy living room with under stair storage, modern kitchen excellent worktop space and a large sun room. The first floor features a master bedroom with fitted wardrobes, second bedroom with fitted wardrobes and a family bathroom. This home further benefits from a low maintenance garden with rear access and one allocated parking bay to the front along with ample visitor parking to the rear.



Council Tax band: C

Tenure: Freehold



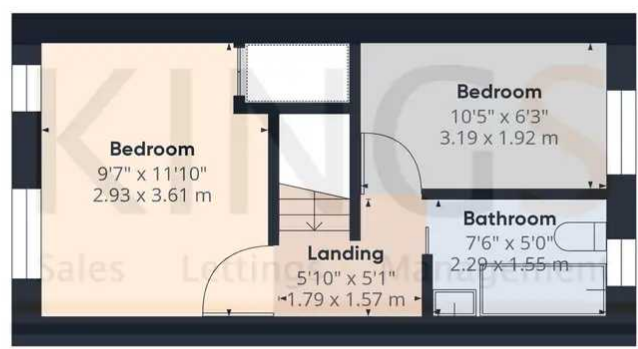
Entrance
2'9" x 3'3"
0.86 x 1.00 m



Ground Floor

Approximate total area⁽¹⁾
670.74 ft²
62.31 m²

Reduced headroom
6.5 ft²
0.6 m²



Floor 1

(1) Excluding balconies and terraces

☒ Reduced headroom (below 1.5m/4.92ft)

While every attempt has been made to ensure accuracy, all measurements are approximate, not to scale. This floor plan is for illustrative purposes only.

GIRAFFE360

