

Alexandra Court, London

Furnished or unfurnished | 2 bedrooms | 2 baths | Lots of lights | Daytime porter | Great location

Asking Price: **£3,000 Per month**

You will love the convenience of living in the heart of Bayswater in this large ground-floor flat. The flat is modern and contemporary with hardwood floors throughout. There is an open-plan lounge, dining and kitchen area which makes for great entertaining and relaxing space.

There are 2 large bedrooms with wardrobes. One bedroom has an ensuite in addition to a family bathroom.

Alexandra Court is a well-looked-after apartment block with a daytime porter.

Bayswater is in the middle of a resurgence with billions going into redeveloping the area. This prime central London location is on the edge of Hyde Park and wonderful restaurants, bars, cafes and shops are at your doorstep.

The location is fantastic as you are moments from Bayswater station (District & Circle lines) on Moscow Road. Queensway is just a little further away (Central line) and Paddington station is also nearby (Bakerloo, Hammersmith & City, District & Circle lines along with Elizabeth line and regional trains). Also, many bus options along Bayswater Road to take you across London.

Key Features

- Furnished or unfurnished
- 2 bedrooms
- 2 baths
- Lots of lights
- Daytime porter
- Great location

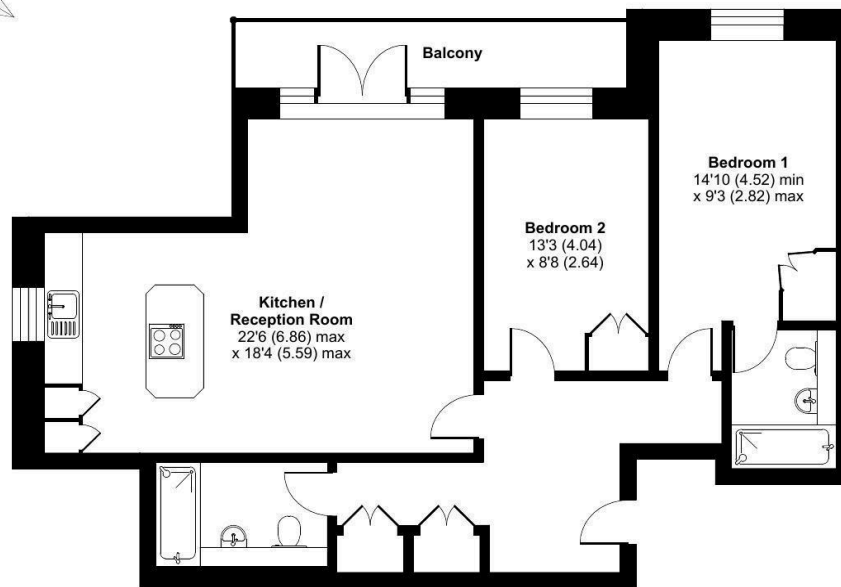




Moscow Road, London, W2

Approximate Area = 861 sq ft / 80 sq m

For identification only - Not to scale



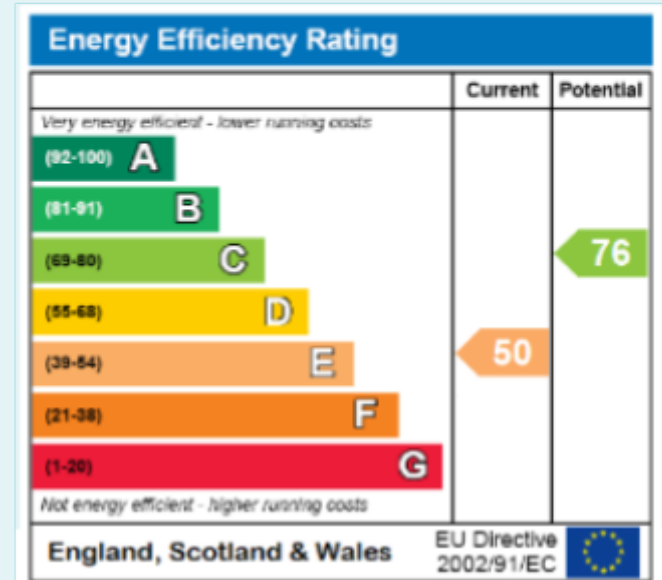
GROUND FLOOR



Floor plan produced in accordance with RICS Property Measurement Standards incorporating International Property Measurement Standards (IPMS2 Residential). © nlcocom 2024. Produced for Onyx Property Consultants Ltd. REF: 1084165

Energy Performance Certificate

The energy efficiency rating is a measure of the overall efficacy of a home. The higher the rating the more energy efficient the home is and the lower the fuel bills will be.



DISCLAIMER

These particulars are intended to give a fair and reliable description of the property but no responsibility for any inaccuracy or error can be accepted and do not constitute an offer or contract. We have not tested any services or appliances (including central heating if fitted) referred to in these particulars and the purchasers are advised to satisfy themselves as to the working order and condition. If a property is unoccupied at any time there may be reconnection charges for any switched off/disconnected or drained services or appliances - All measurements are approximate.