



## FOR SALE

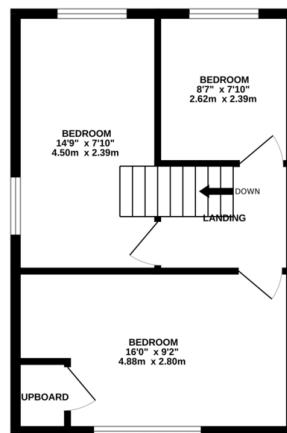
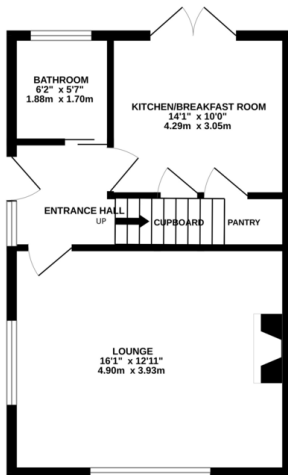
3 Bed Semi-Detached House in Buxton Close, Whetstone, LE8 6NT  
£240,000

Having gone through a schedule of improvements this property would be an ideal first time buy or family home. All work that has been undertaken has been finished to a high standard and is very much 'move in ready'. The accommodation comprises entrance hall, lounge, breakfast kitchen, bathroom, three bedrooms, ample off road parking, detached garage and rear garden. The property is located in a quiet cul-de-sac and is close to local schools and amenities.



GROUND FLOOR  
391 sq.ft. (36.3 sq.m.) approx.

1ST FLOOR  
380 sq.ft. (35.3 sq.m.) approx.



TOTAL FLOOR AREA: 770 sq.ft. (71.6 sq.m.) approx.  
Whilst every attempt has been made to ensure the accuracy of the floorplan contained here, measurements of doors, windows, rooms and any other items are approximate and no responsibility is taken for any error, omission or mis-statement. This plan is for illustrative purposes only and should be used as such by any prospective purchaser. The services, systems and specifications shown have not been tested and no guarantee as to their operability or efficiency can be given.  
Made with Metropix ©2024

EPC to follow

- Semi Detached
- Chalet Style
- Detached Garage
- Three Bedrooms
- Quiet Cul-De-Sac
- New Bathroom
- General Improvements Throughout
- Popular Location

**Agents Note:** Whilst every care has been taken to prepare these sales particulars, they are for guidance purposes only. All measurements are approximate are for general guidance purposes only and whilst every care has been taken to ensure their accuracy, they should not be relied upon and potential buyers are advised to recheck the measurements.

