



**2 Lockbridge Court, Maidenhead, Berkshire, SL6 8UP**

## 2 LOCKBRIDGE COURT MAIDENHEAD, BERKSHIRE SL6 8UP

**PRICE: £695,000**

**SHARE OF FREEHOLD**

With wonderful River Views, within this much sought after secure, gated development in the prestigious Maidenhead Riverside, a spacious first floor apartment offered to the market with no onward chain. Featuring a Master bedroom with en-suite bathroom, second double bedroom, shower room, large living/dining room, re-fitted kitchen, large terrace accessed via the living room and kitchen with views across the River Thames, two parking spaces, bike store and well-maintained communal grounds. Lockbridge Court is conveniently located within a short walk to many sought after restaurants and within easy reach of Maidenhead town centre and train station (Elizabeth Line) and the neighbouring village of Cookham.

**\*SPACIOUS FIRST FLOOR RIVERSIDE APARTMENT**  
**\*TWO DOUBLE BEDROOMS**  
**\*SHOWER ROOM & EN-SUITE BATHROOM**  
**\*LARGE LIVING/DINING ROOM**  
**\*MODERN FITTED KITCHEN**  
**\*LARGE 29FT COVERED BALCONY WITH VIEWS ACROSS THE RIVER**  
**\*TWO CAR PARK SPACES**  
**\*SECURE GATED DEVELOPMENT**  
**\*LIFT TO ALL FLOORS**  
**\*NO ONWARD CHAIN**  
**\*EPC RATING B**  
**\*COUNCIL TAX BAND F**

Service charge: £4,300 per annum

Ground rent: nil

Years remaining on lease: 964

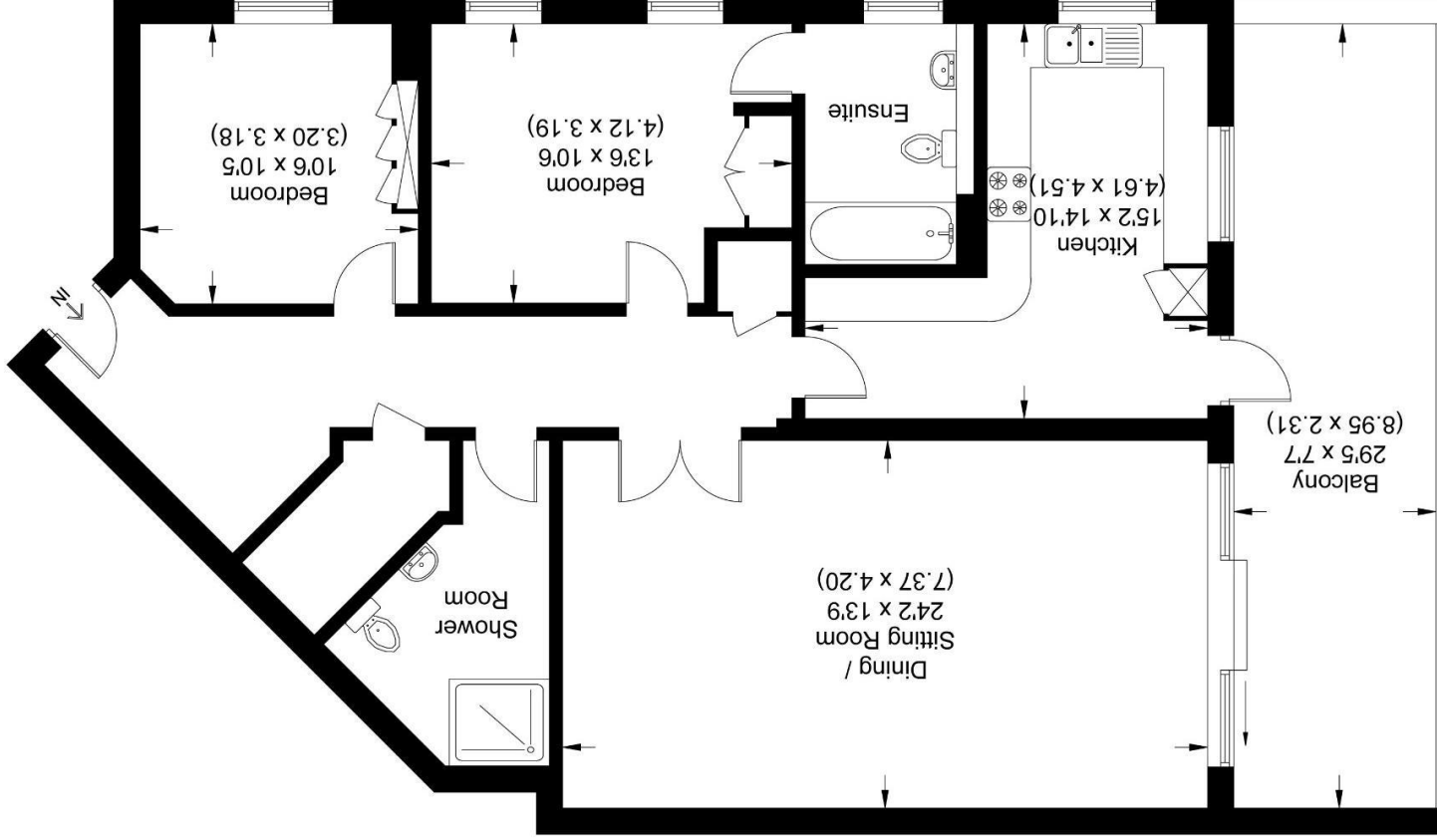




Approximate Gross Internal Area 102.10 sq m / 1098.99 sq ft



### Lockbridge Court



### First Floor

Illustration for identification purposes only, measurements are approximate, not to scale.