

Willan Road, Eccles
Manchester



Offers in Region of **£170,000**

Willan Road

Eccles, Manchester

Beautifully renovated two bed terraced house in an established neighbourhood. Modern kitchen, two double bedrooms with fitted wardrobes, contemporary bathroom. Low maintenance garden. Convenient location near amenities, transport links. Ideal for first-time buyers. Call to view!

Council Tax band: A

Tenure: Freehold

- Beautifully Presented Terrace Property, Undergone Extensive Renovation Work in the Last Three Years
- Two Reception Rooms
- Newly Fitted Kitchen
- Two Generous Double Bedrooms with Fitted Wardrobes
- Modern Bathroom Suite Fitted around Two Years Ago
- Low Maintenance Rear Garden with Artificial Lawn
- Perfectly Located within walking Distance to The Trafford Centre & Eccles Centre
- Surrounded By Excellent Local Amenities, Public Transport & Motorway Links



Entrance Hall

Complete with a ceiling light point and laminate flooring.

Reception One

Complete with a ceiling light point, double glazed window and wall mounted radiator. Fitted with laminate flooring.

Reception Two

Featuring an open fire and fitted units. Complete with a ceiling light point, double glazed window and wall mounted radiator. Fitted with carpet flooring.

Kitchen

11' 1" x 8' 6" (3.38m x 2.59m)

Featuring complementary fitted units with composite sink, gas hob, electric oven and under counter lights. Complete with ceiling spotlights, double glazed window and wall mounted radiator. Fitted with laminate tiled flooring.

Landing

Dimensions: 12' 9" x 4' 3" (3.88m x 1.29m). Carpeted and ceiling light point.

Bedroom One

Featuring fitted wardrobes. Complete with a ceiling light point, double glazed window and wall mounted radiator. Fitted with carpet flooring.

Bedroom Two

12' 9" x 8' 9" (3.88m x 2.66m)

Featuring fitted wardrobes. Complete with a ceiling light point, double glazed window and wall mounted radiator. Fitted with carpet flooring.



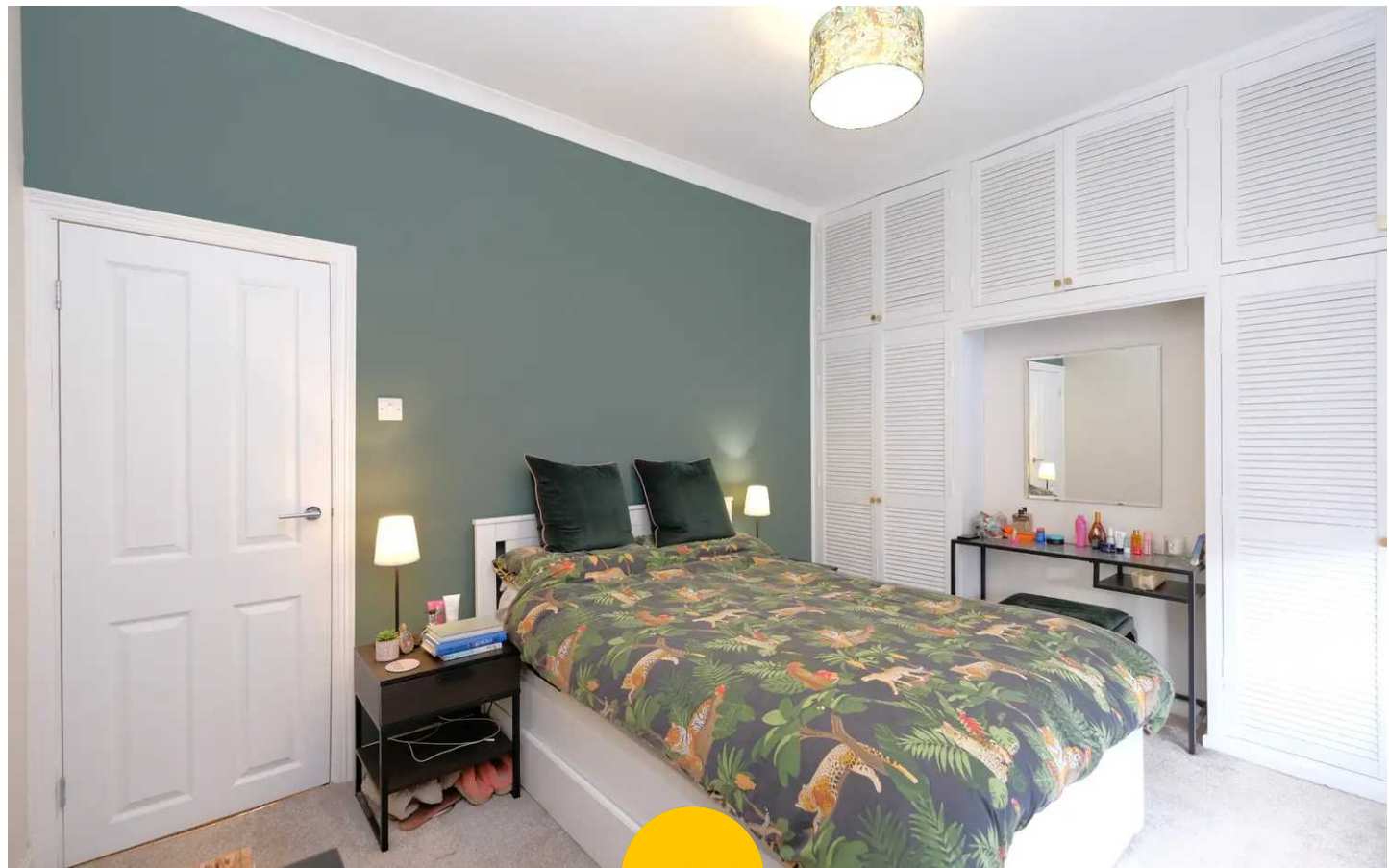
Bathroom

8' 9" x 8' 0" (2.66m x 2.44m)

Featuring a three-piece suite including a bath with shower over, hand wash basin on a vanity unit and W.C. Complete with ceiling spotlights, double glazed window and wall mounted radiator. Fitted with lino flooring.

Externally

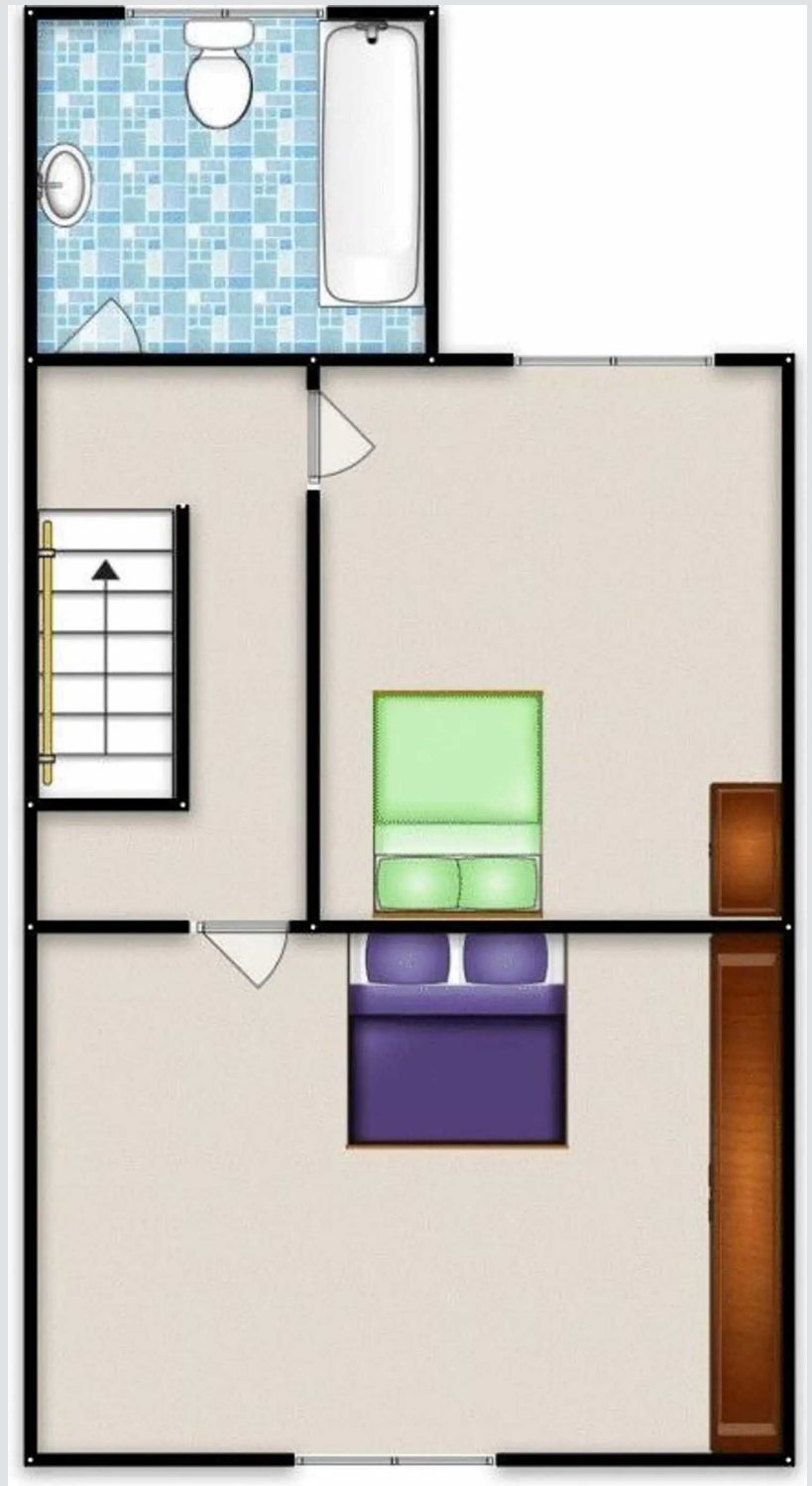
To the rear of the property is an artificial lawn with raised planters with rear gated access.





HILLS







Hills | Salfords Estate Agent

Hills Residential, Sentinel House Albert Street - M30 0SS

0161 707 4900

sales@hills.agency

www.hills.agency/



THE PROPERTY MISDESCRIPTIONS ACT 1991 The Agent has not tested any apparatus, equipment, fixtures and fittings or services and so cannot verify that they are in working order or fit for the purpose. A Buyer is advised to obtain verification from their Solicitor or Surveyor. References to the Tenure of a Property are based on information supplied by the Seller. The Agent has not had sight of the title documents. A Buyer is advised to obtain verification from their Solicitor. You are advised to check the availability of this property before travelling any distance to view. Every effort and precaution has been made to ensure these particulars are correct and not misleading but their accuracy is not guaranteed nor do they form part of any contract. If there is any point which is of particular importance to you, please contact us and we will provide any information you require. This is advisable, particularly if you intend to travel some distance to view the property. The mention of any appliances and services within these details does not imply that they are in full and efficient working order. These particulars are in draft form awaiting Vendors confirmation of their accuracy. These details must therefore be taken as a guide only.