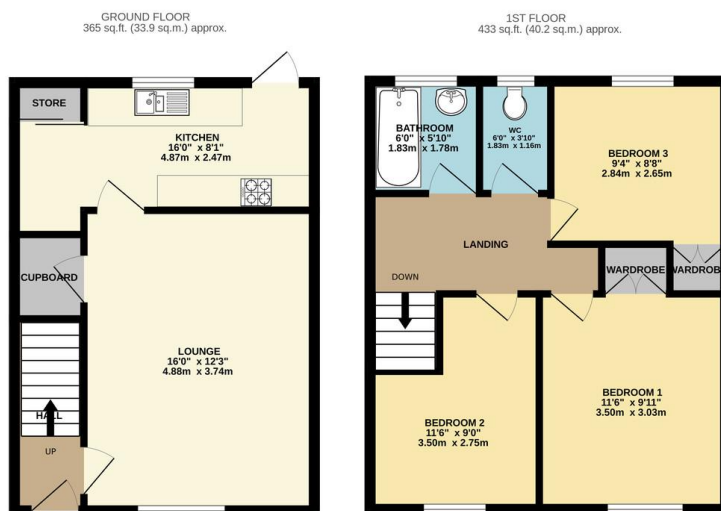




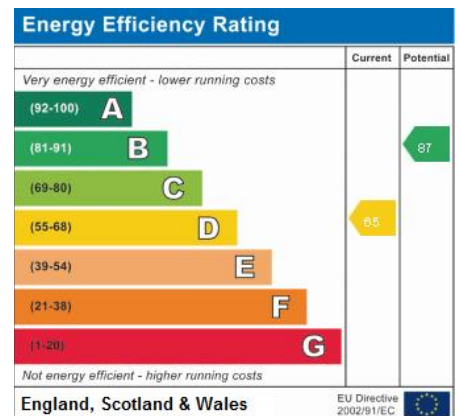
FOR SALE

3 Bed Mid Terraced House in Flamborough Road, Leicester LE5 2HN
£230,000

Set in the highly popular location of Thurnby Lodge, LE5 this three bedroom mid town house has no upward chain and requires renovation throughout. The accommodation comprises of main entrance hall, lounge, kitchen landing to three bedrooms, bathroom and separate WC, front and rear gardens. Contact Phillips George to view.



TOTAL FLOOR AREA: 798 sq.ft. (74.1 sq.m.) approx.
Whilst every attempt has been made to ensure the accuracy of the floorplan contained here, measurements of doors, windows, rooms and any other items are approximate and no responsibility is taken for any error, omission or mis-statement. This plan is for illustrative purposes only and should be used as such by any prospective purchaser. The services, systems and appliances shown have not been tested and no guarantee as to their operability or efficiency can be given.
Made with Metropix 02024



- Mid Town House
- Three Bedrooms
- Thurnby Lodge
- Popular Location
- Requires Modernisation
- Ideal Investment
- Bathroom And Separate W.C
- On Street Parking Bay

Agents Note: Whilst every care has been taken to prepare these sales particulars, they are for guidance purposes only. All measurements are approximate are for general guidance purposes only and whilst every care has been taken to ensure their accuracy, they should not be relied upon and potential buyers are advised to recheck the measurements.

