



JOHN ALEXANDER
ESTATE AGENTS



JOHN ALEXANDER



JOHN ALEXANDER

5 Bedroom Detached House located in Tiptree.

Find us on..



JOHN ALEXANDER
ESTATE AGENTS

Rosemary Crescent Tiptree Colchester CO5 0XA



5



4



2

FULL DESCRIPTION

We're delighted to present this spacious five-bedroom detached family home situated in Rosemary Crescent. The ground floor comprises a study, cloakroom, kitchen breakfast room, separate lounge, and a garden room. Across the additional two floors, you'll discover five double bedrooms, two of which feature en suites, along with two family bathrooms. The property also includes a double garage and ample parking space.

GROUND FLOOR

KITCHEN/DINER

22' 1" x 11' 8" (6.73m x 3.56m)

UTILITY ROOM

9' 4" x 6' 11" (2.84m x 2.11m)

STUDY

9' 10" x 6' 10" (3m x 2.08m)

CLOAKROOM

6' 10" x 2' 10" (2.08m x 0.86m)

LOUNGE

14' 0" x 12' 8" (4.27m x 3.86m)

GARDEN ROOM

19' 5" x 10' 11" (5.92m x 3.33m)

FIRST FLOOR

MASTER BEDROOM

16' 3" x 9' 8" (4.95m x 2.95m)

ENSUITE

10' 03" x 6' 1" (3.12m x 1.85m)

BEDROOM 4

11' 3" x 9' 9" (3.43m x 2.97m)

JACK & JILL BATHROOM

9' 0" x 9' 5" (2.74m x 2.87m)

BEDROOM 5

11' 3" x 9' 8" (3.43m x 2.95m)

ENSUITE

7' 0" x 6' 5" (2.13m x 1.96m)

SECOND FLOOR

BEDROOM 2

14' 4" x 10' 1" (4.37m x 3.07m)

BEDROOM 3

14' 4" x 9' 9" (4.37m x 2.97m)

BATHROOM

6' 7" x 6' 6" (2.01m x 1.98m)

Guide Price £600,000
to £650,000



GARDEN

Patio area, mainly laid to lawn with flower and shrub borders.

DOUBLE GARAGE







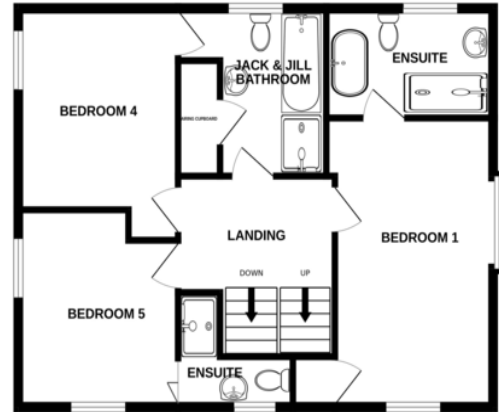
Rosemary Crescent, Tiptree CO5 0XA



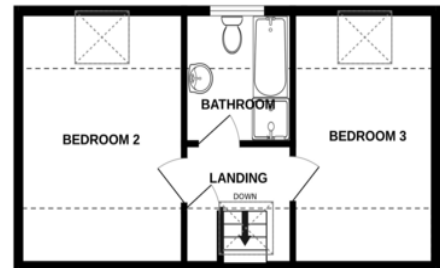
FLOORPLAN



1ST FLOOR
650 sq.ft. (60.4 sq.m.) approx.



2ND FLOOR
365 sq.ft. (33.9 sq.m.) approx.



TOTAL FLOOR AREA : 1901 sq.ft. (176.6 sq.m.) approx.

Whilst every attempt has been made to ensure the accuracy of the floorplan contained here, measurements of doors, windows, rooms and any other items are approximate and no responsibility is taken for any error, omission or mis-statement. This plan is for illustrative purposes only and should be used as such by any prospective purchaser. The services, systems and appliances shown have not been tested and no guarantee as to their operability or efficiency can be given.
Made with Metropix ©2024

DIRECTIONS

CONTACT
1 Church Road
Tiptree
Colchester
Essex
CO5 0LG
E info@john-alexander.co.uk

T 01621 814334 www.john-alexander.co.uk

Find us on..



JOHN ALEXANDER
ESTATE AGENTS