

# Complete Property Services Property Brochure

Key information for buyers

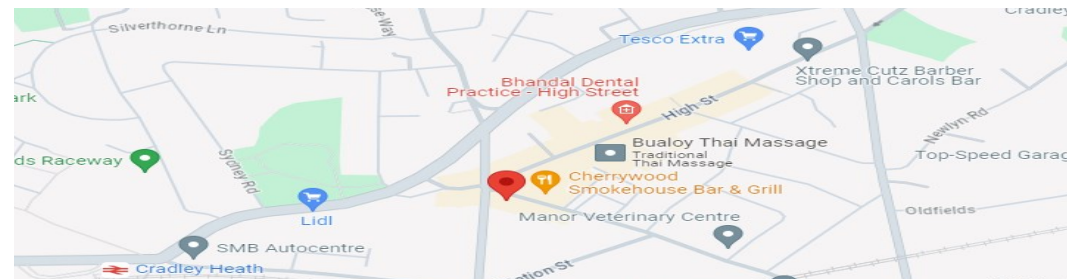


## Graingers Lane, Cradley Heath

B64 6AH

Starting Bid £130,000

Freehold



**Page 1:** Overview

**Pages 2-3:** Photos

**Page 4:** Map & Nearby

**Page 5:** Floor Plan

**Page 6:** EPCs

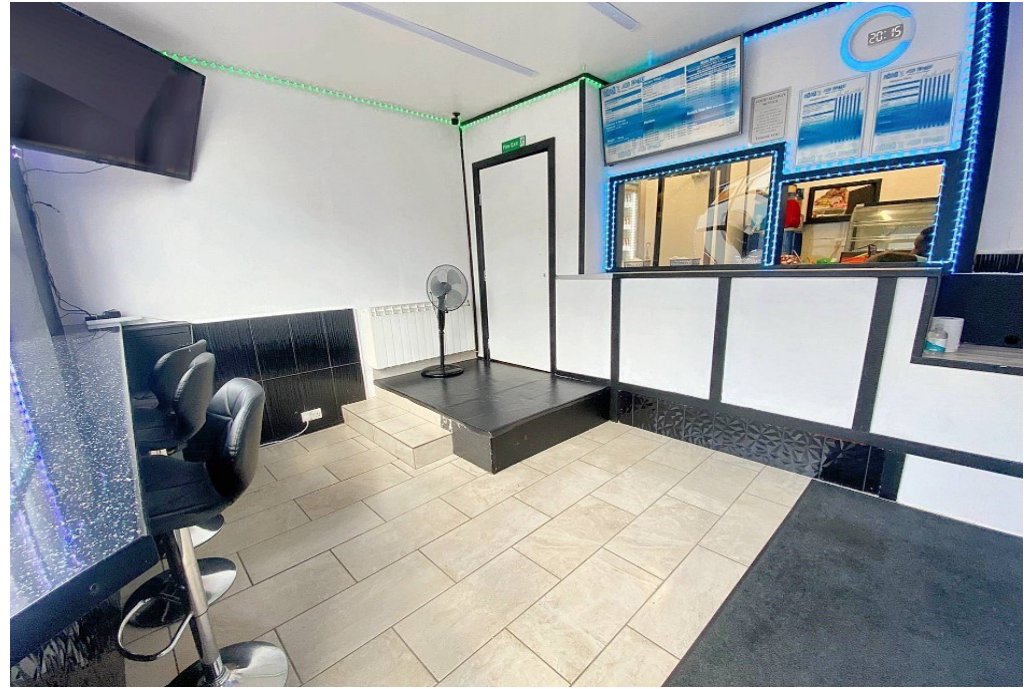
### Key Facts



Property Type  
**Mixed-Use**



Comprising  
**Ground-Floor Shop & Top-Floor Flat**

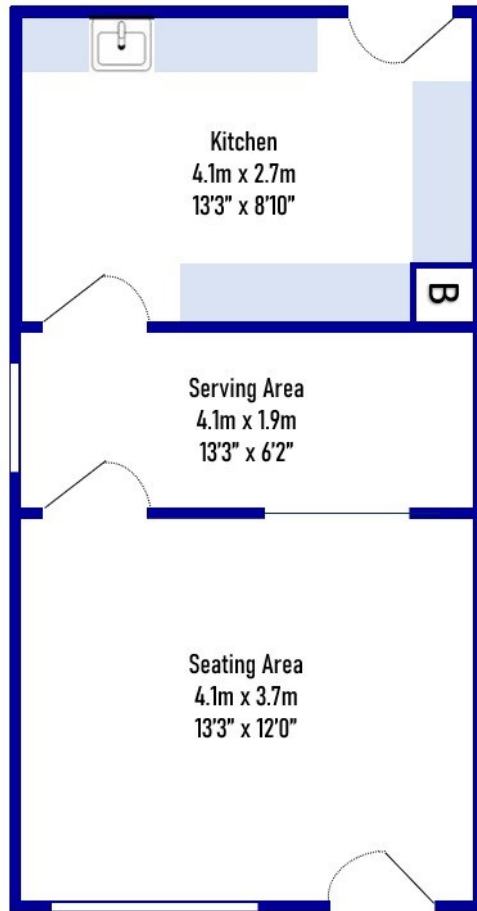




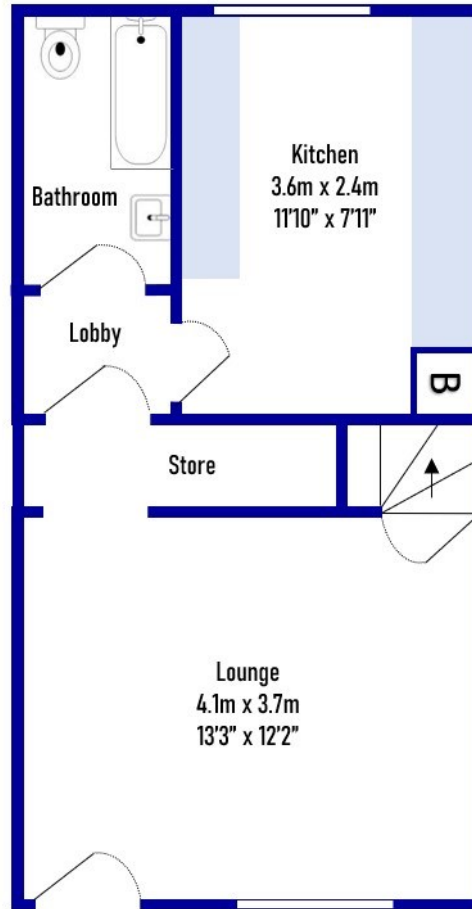




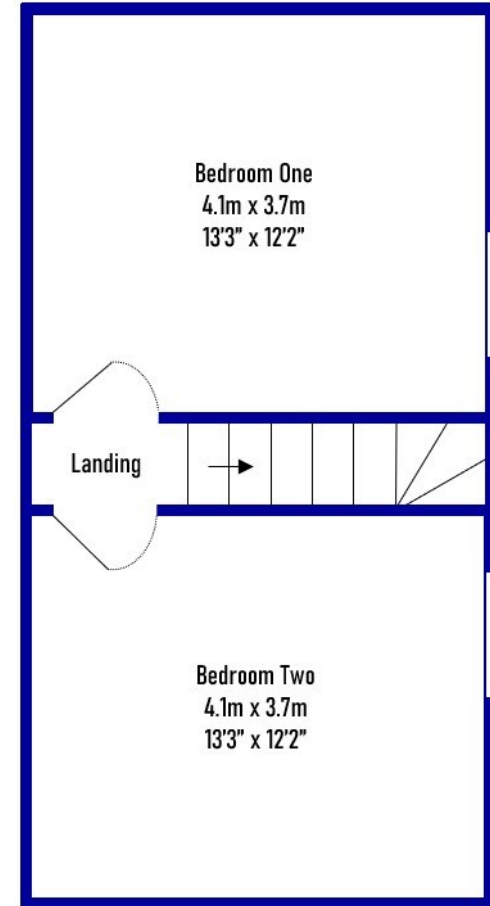
Graingers Lane, Cradley Heath, B64 6AH  
(96sq m / 1033sq ft)



Ground Floor  
(34sq m / 365 sq ft)



First Floor  
(31sq m / 334 sq ft)

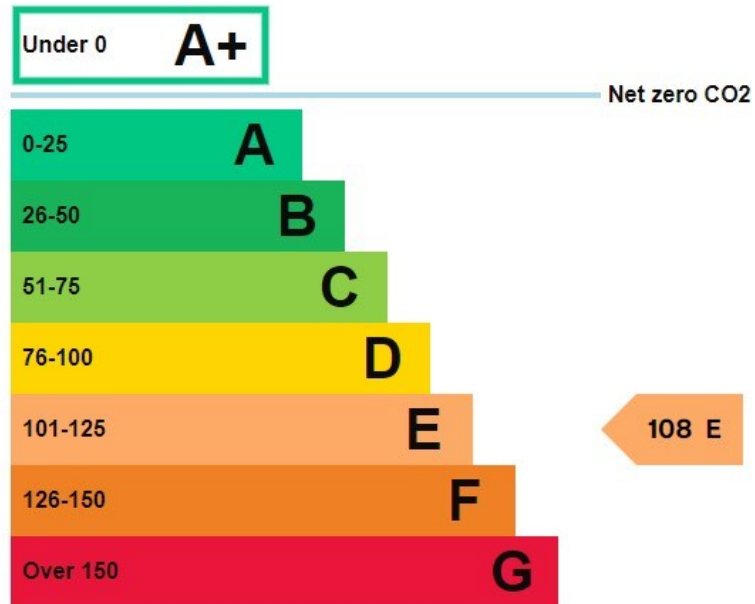


Second Floor  
(31sq m / 334 sq ft)

Whilst every attempt has been made by **Complete Property Services** to ensure the accuracy of the floorplan contained here, measurements of doors, windows, rooms and any other items are approximate, and no responsibility is taken for any error, omission or mis-statement. The services, systems and appliances shown have not been tested and no guarantee as to their operability or efficiency can be given.

## Energy rating and score

This property's energy rating is E.



Properties get a rating from A+ (best) to G (worst) and a score.

The better the rating and score, the lower your property's carbon emissions are likely to be.

## Energy rating and score

This property's energy rating is E. It has the potential to be C.

[See how to improve this property's energy efficiency.](#)

Score	Energy rating	Current	Potential
92+	A		
81-91	B		
69-80	C		71 C
55-68	D		
39-54	E	48 E	
21-38	F		
1-20	G		

The graph shows this property's current and potential energy rating.

**Properties get a rating from A (best) to G (worst) and a score.** The better the rating and score, the lower your energy bills are likely to be.