



Sam's Snug, Bulmer Lane, Winterton-On-Sea

£300,000 Freehold

GUIDE PRICE £300,000-£325,000 Nestled within a quaint village setting, this characterful cottage presents a unique opportunity for those seeking an idyllic retreat. Boasting a versatile layout ideal for both a successful AirBnB venture or as a charming family home, this property exudes warmth and charm from the moment you step through the welcoming porch entrance.

Council Tax band: C

Tenure: Freehold

GUIDE PRICE £300,000-£325,000 Nestled within a quaint village setting, this characterful cottage presents a unique opportunity for those seeking an idyllic retreat. Boasting a versatile layout ideal for both a successful AirBnB venture or as a charming family home, this property exudes warmth and charm from the moment you step through the welcoming porch entrance.

LOCATION

Nestled in the heart of Winterton-On-Sea, Bulmer Lane exudes a quaint charm that captures the essence of a close-knit coastal community. This picturesque locale, with its winding pathways and

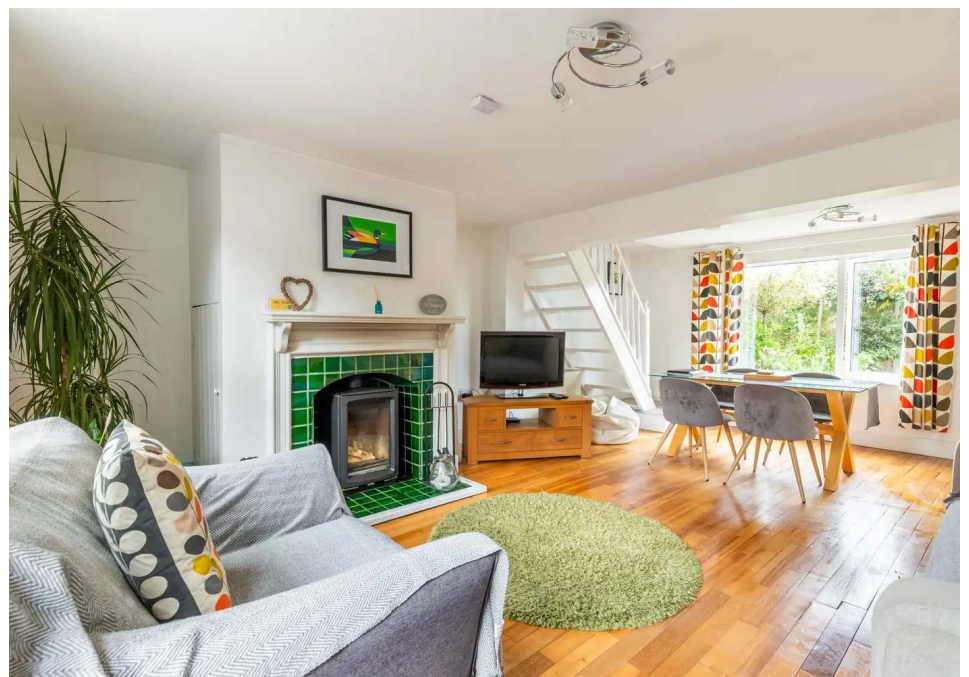
streets, invites residents and visitors alike to experience the timeless beauty of seaside living. Bulmer Lane is surrounded by natural beauty, from the nearby dunes to the soothing murmur of the sea. Charming cottages and well-tended gardens add to the idyllic atmosphere, creating a perfect retreat for those who appreciate the tranquility of Winterton-On-Sea. With its timeless appeal and coastal allure,



GUIDE PRICE £300,000-£325,000 Nestled within a quaint village setting, this characterful cottage presents a unique opportunity for those seeking an idyllic retreat. Boasting a versatile layout ideal for both a successful AirBnB venture or as a charming family home, this property exudes warmth and charm from the moment you step through the welcoming porch entrance.

LOCATION

Nestled in the heart of Winterton-On-Sea, Bulmer Lane exudes a quaint charm that captures the essence of a



GUIDE PRICE £300,000-£325,000 Nestled within a quaint village setting, this characterful cottage presents a unique opportunity for those seeking an idyllic retreat. Boasting a versatile layout ideal for both a successful AirBnB venture or as a charming family home, this property exudes warmth and charm from the moment you step through the welcoming porch entrance.

LOCATION

Nestled in the heart of Winterton-On-Sea, Bulmer Lane exudes a quaint charm that captures the essence of a close-knit coastal community. This picturesque locale, with its winding pathways and

streets, invites residents and visitors alike to experience the timeless beauty of seaside living. Bulmer Lane is surrounded by natural beauty, from the nearby dunes to the soothing murmur of the sea. Charming cottages and well-tended gardens add to the idyllic atmosphere, creating a perfect retreat for those who appreciate the tranquility of Winterton-On-Sea. With its timeless appeal and coastal allure, Bulmer Lane stands as a testament to the enchanting character of this seaside village.

BULMER LANE

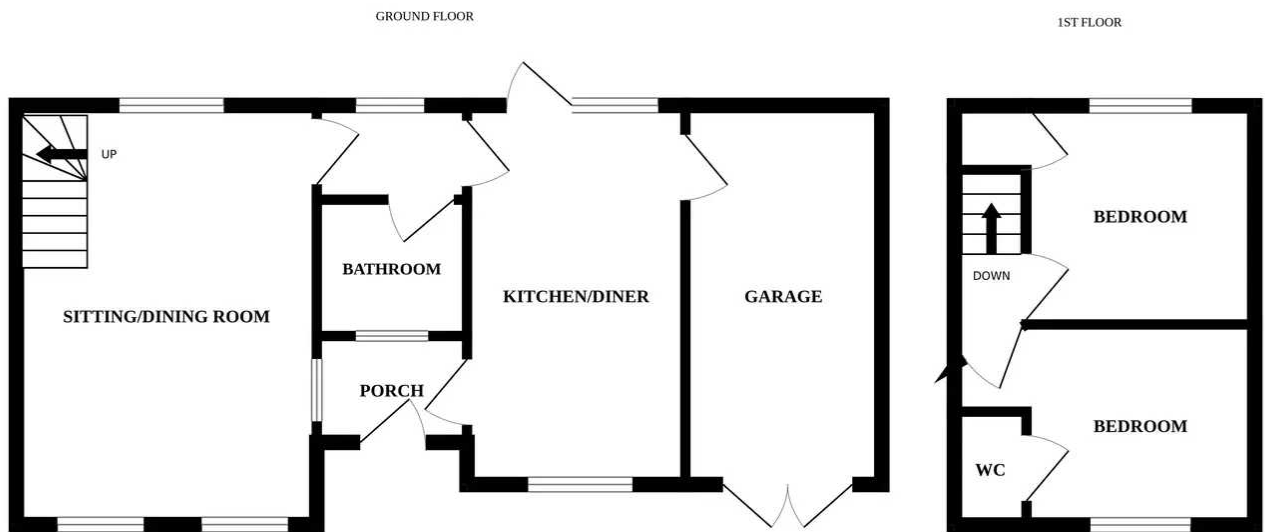
Upon arrival to this charming cottage is a driveway providing off-road parking for three vehicles, whilst the garage offers extra storage space.

Step inside where you are instantly greeted by a bright and welcoming porch, leading you from the outside world into the sanctum of the home. The pleasant sitting room is perfect for you to showcase your most comfortable furniture and dining set-up, encouraging gatherings with family and friends. With the presence of a log burner, creating a warm and inviting ambiance.

At the heart of the home lies a well-equipped kitchen, fitted with units and integrated appliances to enhance your cooking experience. Offering ample amount of storage space and under-counter areas for your laundry goods. Located on the ground floor is a bathroom, comprising of a modern three piece suite, accommodating all family members and guests.

Ascend to the first floor, where you will discover two double bedrooms, designed to offer you relaxation and privacy. One of which is complimented by a convenient WC. For AirBnB purposes you have the versatility to be a double bedroom and two single beds, perfect for children or visitors.





Whilst every attempt has been made to ensure the accuracy of the floorplan contained here, measurements of doors, windows, rooms and any other items are approximate and no responsibility is taken for any error, omission or mis-statement. This plan is for illustrative purposes only and should be used as such by any prospective purchaser. The services, systems and appliances shown have not been tested and no guarantee as to their operability or efficiency can be given.
Made with Metropix ©2024

You can include any text here. The text can be modified upon generating your brochure.

You can include any text here. The text can be modified upon generating your brochure.

