



14 Hartland Drive, Ruislip

Ruislip

£537,500

Lr LAWRENCE RAND

14 Hartland Drive

Ruislip, Ruislip

A three-bedroom two-bathroom property situated on this quiet residential road with a South-West facing garden.

Council Tax band: D

Tenure: Freehold

EPC Energy Efficiency Rating: E

EPC Environmental Impact Rating: E

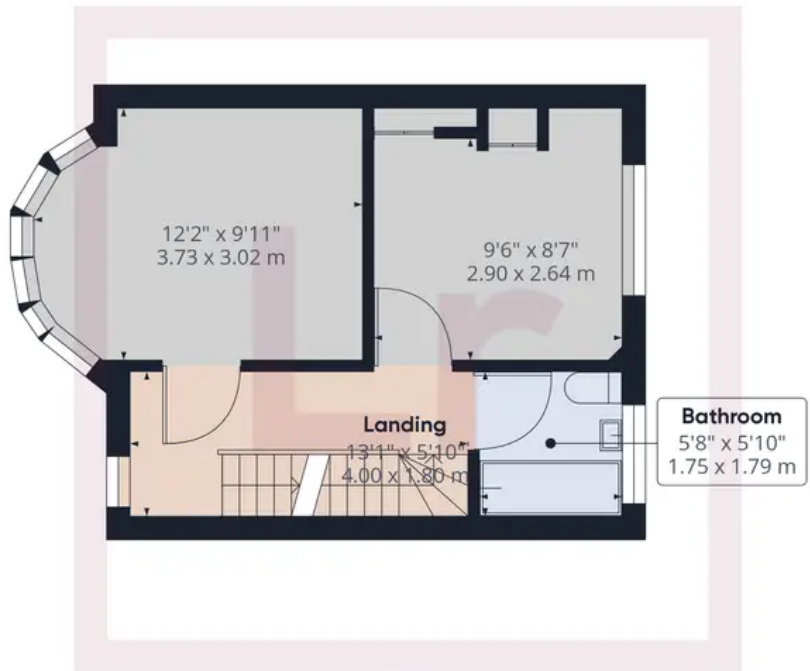
- Three double bedrooms
- Two bathrooms
- Off street parking
- Extended
- No chain







Ground Floor Building 1



Floor 1 Building 1

Approximate total area⁽¹⁾
 1140.79 ft²
 105.98 m²

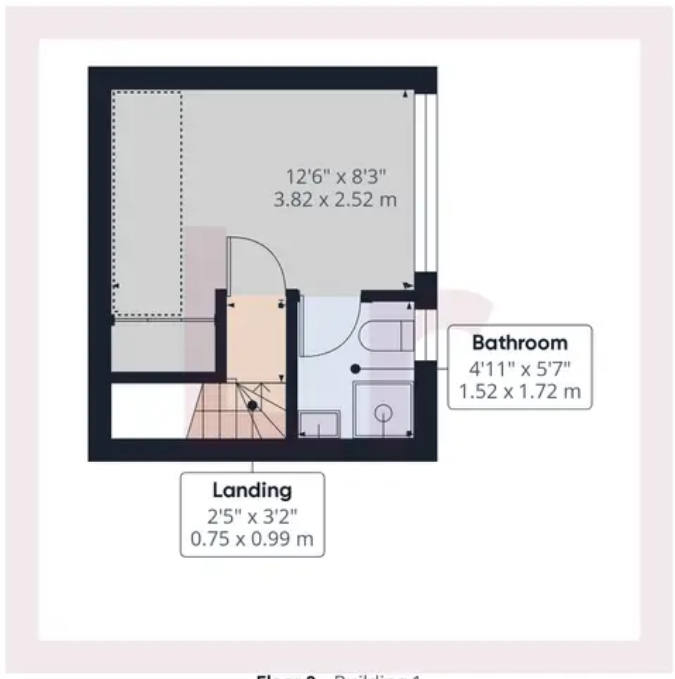
Reduced headroom
 25.4 ft²
 2.36 m²

(1) Excluding balconies and terraces

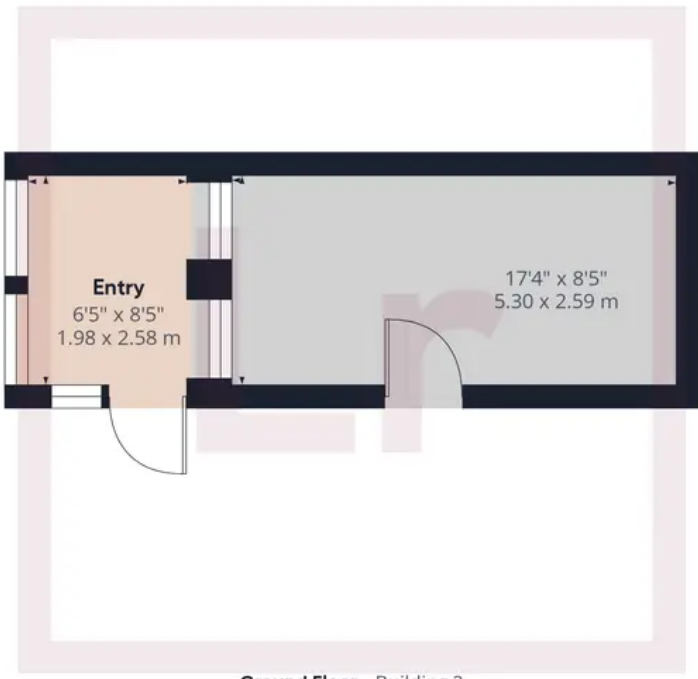
Reduced headroom (below 1.5m/4.92ft)

While every attempt has been made to ensure accuracy, all measurements are approximate, not to scale. This floor plan is for illustrative purposes only.

GIRAFFE360



Floor 2 Building 1



Ground Floor Building 2



Lawrence Rand

Lawrence Rand, 106 Victoria Road - HA4 0AL

01895 632211

Info@lawrence-rand.co.uk

www.lawrence-rand.co.uk/



LAWRENCE RAND