

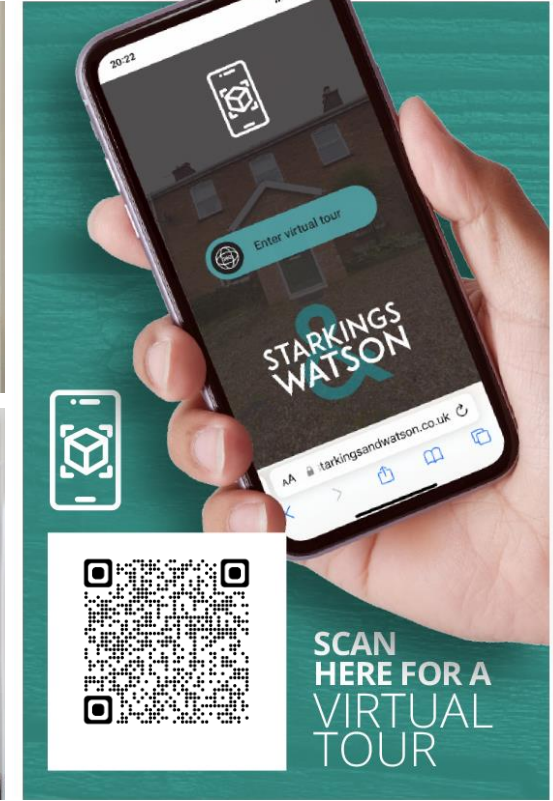
NUFFIELD CRESCENT

Gorleston, Great Yarmouth NR31 7LL

Freehold | Energy Efficiency Rating : C

To arrange an accompanied viewing please pop in or call us on 01603 336116

FOR SALE
PROPERTY



arla | propertymark

PROTECTED

naea | propertymark

PROTECTED



For our full list of available properties, or for a FREE INSTANT online valuation visit

starkingsandwatson.co.uk



STARKINGS
&
WATSON

- End Of Terrace House
- 15' Sitting Room
- Fitted Kitchen with Pantry Storage
- Family Bathroom & Cloakroom
- Three Bedrooms
- Ample Off Road Parking
- Private Rear Garden
- Substantial Workshop & External Workspace

IN SUMMARY

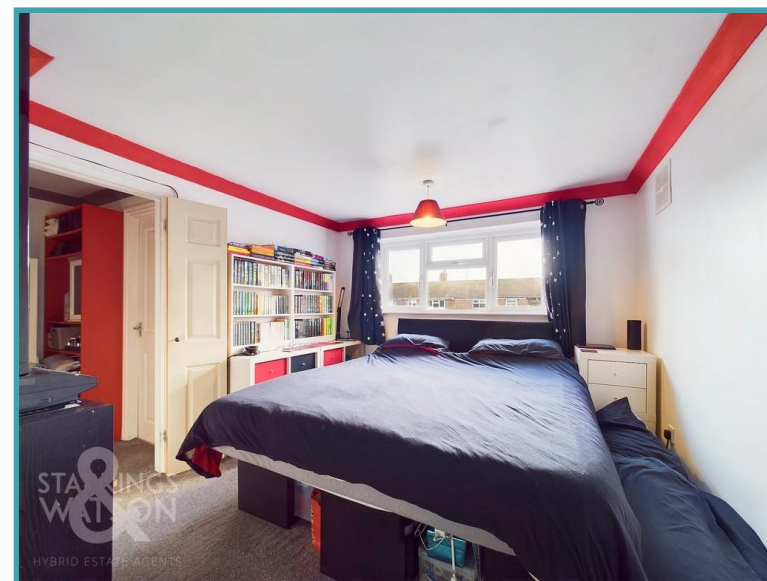
MOTIVATED SELLERS. This END OF TERRACE HOUSE is situated set back from the road giving it an abundance of OFF ROAD PARKING. Internally the accommodation has recently been UPDATED by the current owners. This accommodation includes a DUAL ASPECT SITTING ROOM, kitchen with BREAKFAST BAR and PANTRY storage all finished with a ground floor CLOAKROOM. The first floor gives access to THREE BEDROOMS with the larger offering potential for BUILT IN WARDROBES, a NEWLY FITTED family bathroom plus a central landing with lots of STORAGE potential. Externally, the low maintenance garden is surrounded by timber fencing with multiple OUTBUILDINGS including an EXTENSIVE WORKSHOP.

SETTING THE SCENE

The property is found at a spot on the close where the road turns meaning the adjacent properties are set back even further than usual giving an enhanced sense of privacy. This property is also set back from the road with a large concrete driveway to the front giving lots of parking potential which could easily be turned into a well decorated lawn garden if parking is not a necessity.

THE GRAND TOUR

Stepping into the property you will be faced with the stairs in front leading to the first floor. Turning to your left you will enter the carpeted, well-lit sitting room which is currently used as an entertainment area but offers more than enough floor space for soft furnishings to create an ideal sitting room. Adjacent to this, and just to the right of the front door, is the cloakroom. This space houses the gas boiler and gives space to the handy coat storage as well as the toilet. Towards the rear of the property is the kitchen with a wide range of wall and base mounted storage plus an ever popular pantry storage too, heading under the stairs. There are integrated cooking appliances including an electric hob and integrated oven whilst there is lots of space under the work tops for a fridge, freezer, tumble dryer and plumbing for the washing machine and dishwasher. Next to the rear access door to the rear garden is a breakfast bar sitting in the middle of the room making this space an ideal spot to catch up whilst cooking dinner or enjoying breakfast. Heading up the stairs you will find a split landing, much larger than anticipated creating an ideal space for additional storage as envisaged by the current owners. To the front of the property, you can find two of the bedrooms with the right hand side room being the smaller. This room has carpeted flooring, uPVC double glazed window to the front, a radiator and does create the ideal space for a smaller bedroom, nursery or home office space. Next to this is the second bedroom, also with carpeted flooring, uPVC window to the front, radiator currently being used as a storage room but would make a great second bedroom. Towards the rear of the property, to the right of the stairs, is the largest bedroom, with ample space for a large bed and additional storage. There is a large window overlooking



To arrange an accompanied viewing please call our Centralised Hub on **01603 336116**



the rear garden and currently, the owners have found an alternative use for the integrated storage space however, this could easily be re-instated to create built in wardrobes and additional floor space. Finally, the family bathroom is an attractively fitted bathroom suite with tiled surround, toilet and wash basin set with vanity storage and bathtub with a glass screen and wall mounted shower head.

THE GREAT OUTDOORS

The rear garden is predominantly laid with concrete as to meet the vendors requirements of additional storage but could easily be laid to lawn to create a family friendly space. Currently there is a bespoke built workshop set upon concrete hard standing, with full electric plus multiple additional sheds/outbuildings.

OUT & ABOUT

The property is situated in Gorleston, out of town, with a wealth of local amenities close by, whilst benefiting from excellent transport links to Great Yarmouth, Lowestoft and Norwich. Amenities include various public houses, retail outlets, schools, doctors and dental practices. Naturally, being a coastal town, the beach and coastline is a local attraction and various car parks allow access.

FIND US

Postcode : NR31 7LL

What3Words : ///bothered.pollution.shoelaces

VIRTUAL TOUR

View our virtual tour for a full 360 degree of the interior of the property.

Disclaimer: Whilst every care has been taken to prepare these sales particulars, they are for guidance purposes only. All measurements are approximate are for general guidance purposes only and whilst every care has been taken to ensure their accuracy, they should not be relied upon and potential buyers are advised to recheck the measurements.

Price:



For our full list of available properties, or for a FREE INSTANT online valuation visit

starkingsandwatson.co.uk

GIRAFFE 360

While every attempt has been made to ensure accuracy, all measurements are approximate, not to scale. This floor plan is for illustrative purposes only.

(1) Excluding balconies and terraces

Approximate total area^m
 754.69 ft²
 70.11 m²

STARKINGS
 WATSON
 HYBRID ESTATE AGENTS

Floor 1

