



1 Northfield Farm Mews, Cobham
£2,750 pcm

GROSVENOR
SURREY

Northfield Farm Mews

Approximate Gross Internal Area
Ground Floor = 52.6 sq m / 566 sq ft
First Floor = 44.4 sq m / 477 sq ft
Second Floor = 28.3 sq m / 304 sq ft
Total = 125.3 sq m / 1347 sq ft
(Excluding Eaves)

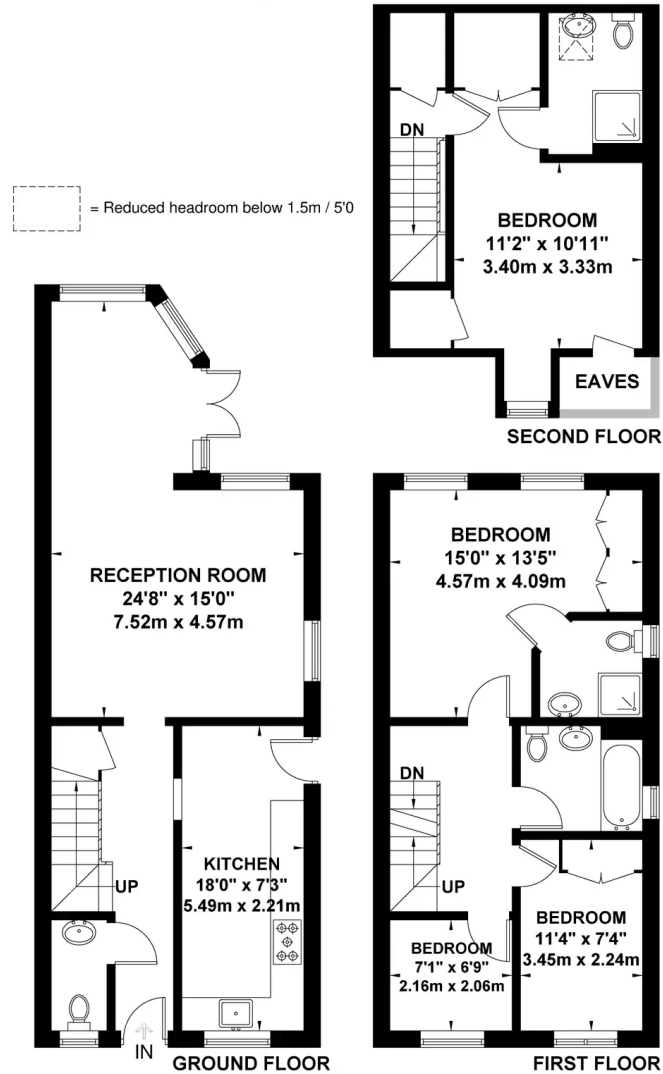
1 Northfield Farm Mews

Cobham, Cobham

A modern family home in a gated development with four bedrooms and three bathrooms close by to the High Street and popular Cobham Free School.

Council Tax band: F

Tenure: Freehold



Viewmedia @ 2020
Viewmedia.co.uk

Whilst every attempt has been made to ensure the accuracy of this floor plan, measurements of doors, windows and rooms are approximate and no responsibility is taken for any error or omission. This illustration is for identification purpose only. Measured and drawn accordance with RICS guidelines. Not drawn to scale, unless stated. Dimensions shown are to the nearest 3" and are to the points indicated by the arrow heads.

