



The Headlands Cliff Road, Torquay – TQ2 6SW

Guide Price £260,000





The Headlands

Cliff Road, Torquay

Ground floor flat in prestigious seaside development. Features include telephone security entrance with impressive waterfall feature, private patio, fitted kitchen, en suite bathroom, double glazing, allocated parking, clifftop communal gardens to the rear with stunning sea views.

Council Tax band: B

Tenure: Leasehold

EPC Energy Efficiency Rating: C

- Prestigious seaside development
- Telephone security entrance system
- Impressive communal reception hallway with feature waterfall
- Lounge/dining room with access to a private patio area
- Fitted kitchen with built in appliances
- Two double bedrooms, main with en suite bathroom/WC
- Separate shower room/WC
- uPVC double glazing and electric night storage heating
- Allocated parking for one car
- Impressive clifftop communal gardens enjoying uninterrupted sea views



The Headlands, Cliff Road

Torquay,

The property occupies a much sought after residential position on the headland at Livermead and provides easy access to Torquay sea front and town centre, both within approximately 2 miles distance. There are some nearby shops and facilities and a local bus service. There is also easy access to Preston sea front and Paignton again being approximately 3 miles distance with its array of shops, amenities and facilities.

Absolute Sales & Lettings

Absolute Sales & Lettings Ltd, 13 Ilsham Road - TQ1 2JG

01803 214214

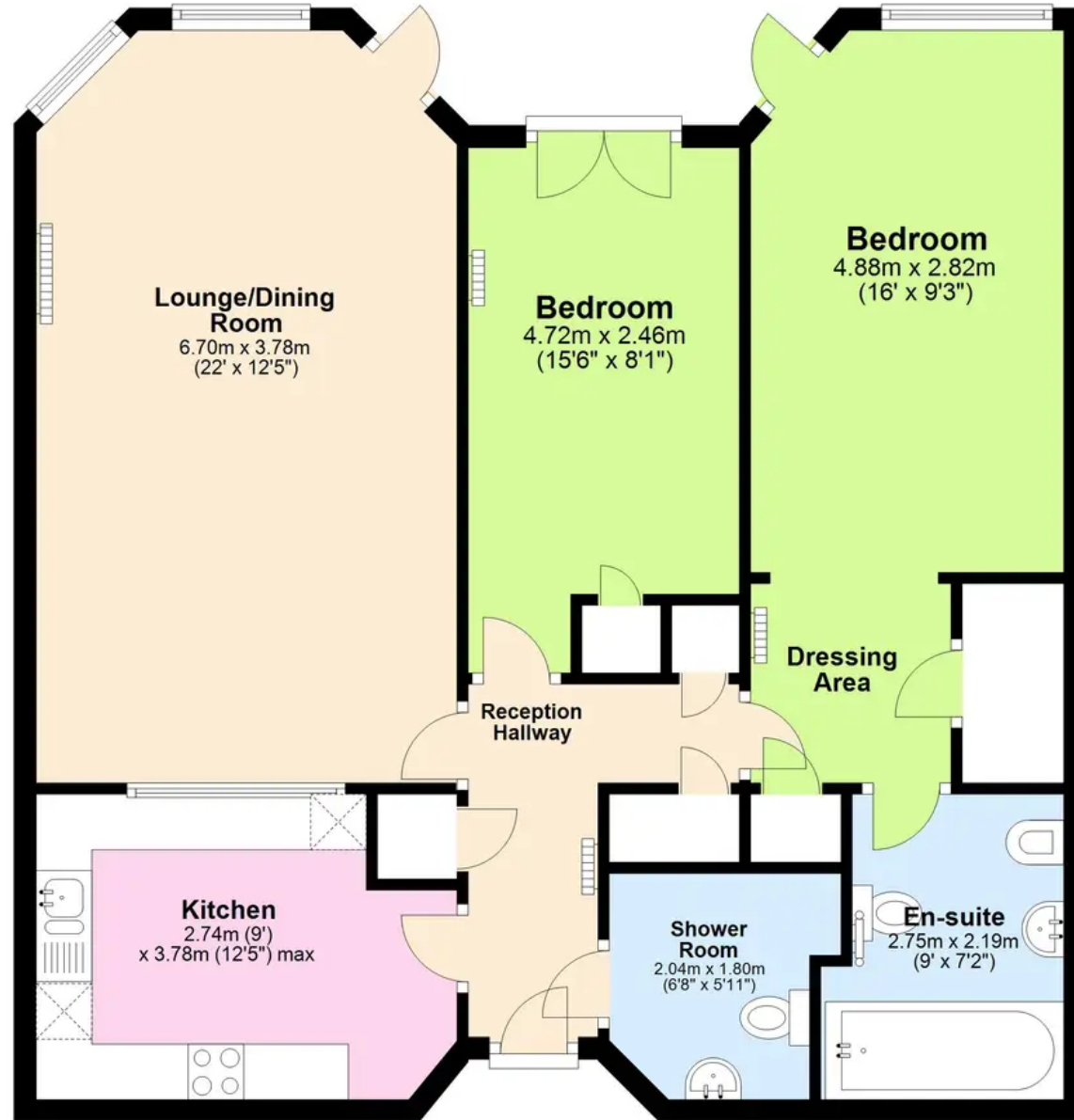
torquay@movewithabsolute.co.uk

movewithabsolute.co.uk/



Ground Floor

Approx. 83.8 sq. metres (901.7 sq. feet)



Total area: approx. 83.8 sq. metres (901.7 sq. feet)

Approx
Plan produced using PlanUp.

