



**MODERN TWO/THREE BEDROOM HOME IN THE HEART OF RICKMANSWORTH**

Talbot Road, Rickmansworth, Hertfordshire, WD3 1HD





## MODERN TWO/THREE BEDROOM HOME IN THE HEART OF RICKMANSWORTH

- RECEPTION ROOM
- KITCHEN
- SUN ROOM
- TWO BEDROOMS
- BEDROOM THREE/STUDY
- FAMILY BATHROOM
- REAR GARDEN

### Description

A bright, charming and well-presented two/three bedroom family home situated in the heart of Rickmansworth, ideally positioned for a number of highly regarded schools, excellent transport links and local amenities.

The ground floor comprises a beautiful front-aspect reception room with a feature fireplace, leading to a modern kitchen offering a range of fitted units, integrated appliances, a Rayburn cooker and room for a small dining table and chairs. Off the kitchen is a delightful sun room with French doors opening out to the garden. Completing the ground floor is a family bathroom.







To the first floor are two well-appointed bedrooms with one benefitting from fitted wardrobes and a third bedroom/study with a skylight.

Externally, this delightful property boasts a well-presented rear garden, laid to lawn with flowerbed borders, a patio area and a garden store.

### Location

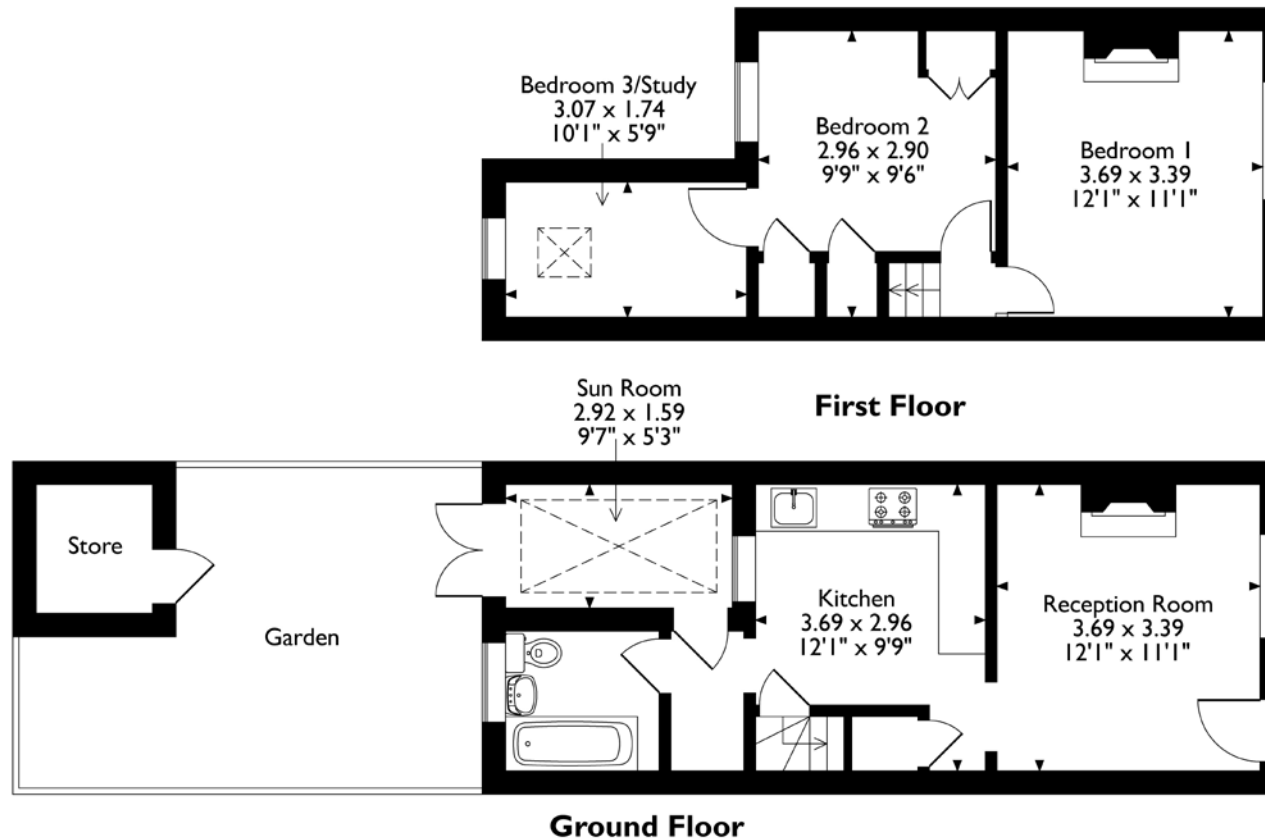
Rickmansworth town centre has a wide range of boutique shops, coffee houses, restaurants and major supermarkets. The Metropolitan and Chiltern line train services connect you to London Baker Street, Marylebone Station and beyond. The M25 motorway is available at both junction 17 and 18, connecting you to the national motorway network. Major London airports are also within reach. The area is well served for good quality private and state schools for all ages. Chorleywood and Rickmansworth offer everything for the sporting individual from rugby, cricket, football, tennis, horse riding and golf. Rickmansworth Aquadrome is an ideal setting for walks, sailing, fishing and water skiing.

### Additional Information

Tenure: Freehold  
Local Authority: Three Rivers District Council  
Council Tax: Band D  
Energy Efficiency Rating: Band E



Talbot Road, Rickmansworth, Hertfordshire  
Approximate Gross Internal Area  
67 Sq M/716 Sq Ft



Please note that the location of doors, windows and other items are approximate and this floorplan is to be used for illustrative purposes only. Unauthorized reproduction is prohibited.

**ROBSONS**

130 High Street, Rickmansworth, Hertfordshire, WD3 1AB  
Tel: 01923 777762 rickmansworth@robsonswb.com

[www.robsonswb.com](http://www.robsonswb.com)

www.  
the  
londonoffice.co.uk  
40 ST JAMES'S PLACE SW1