



7 Shenley Avenue, Ruislip

Ruislip

£350,000

 LAWRENCE RAND



# 7 Shenley Avenue

Ruislip, Ruislip

Situated within walking distance to the station, this two double bedroom first floor maisonette presents an excellent opportunity for first time buyers or investors. The property benefits from a new lease upon completion, offering peace of mind for the prospective buyer.

Council Tax band: C

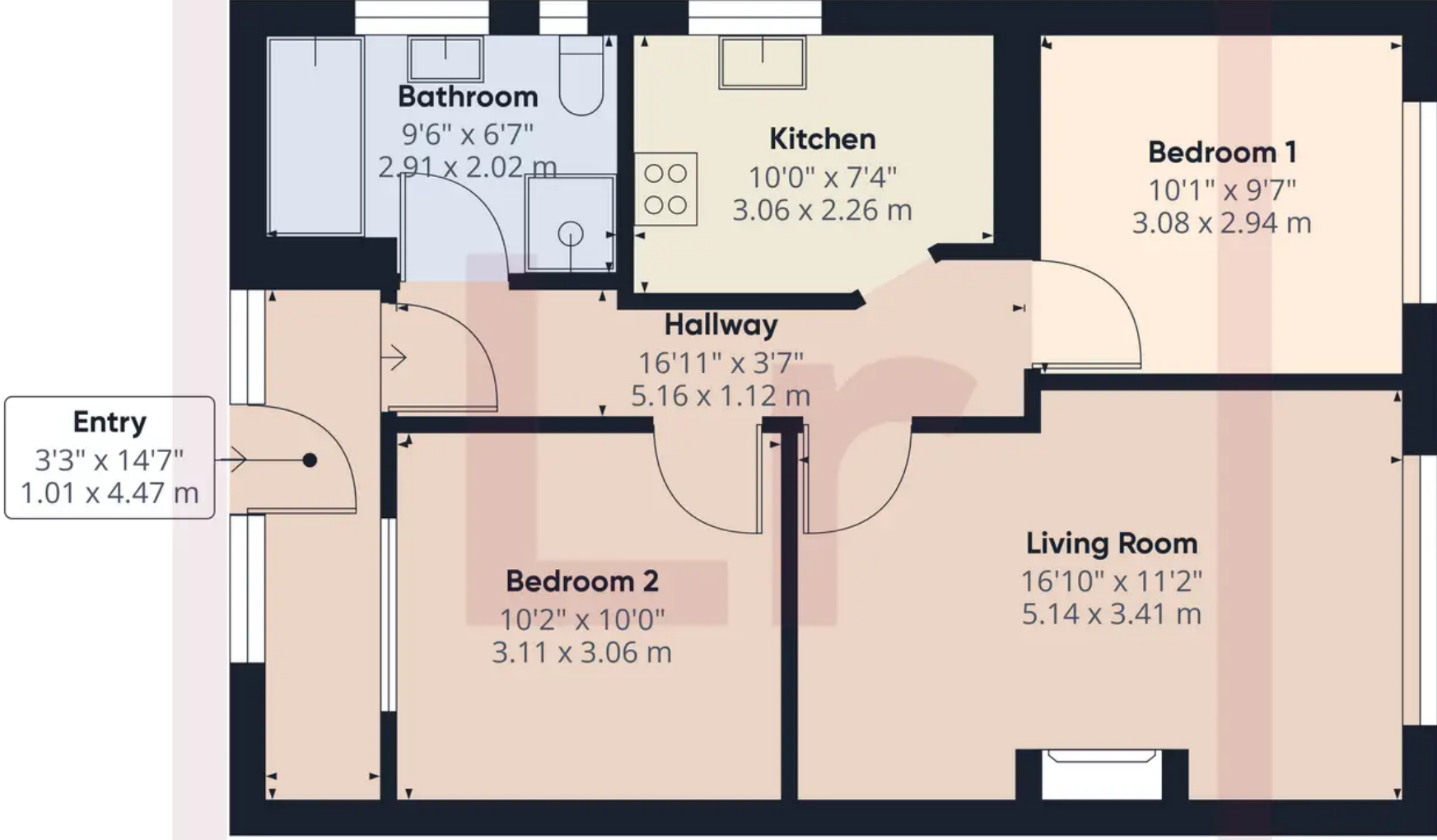
Tenure: Leasehold

- Two Double Bedrooms
- First Floor Maisonette
- New Lease Upon Completion
- Large Reception/Dining Room
- Kitchen
- Family Bathroom
- Walking Distance to Station









Approximate total area<sup>(1)</sup>  
627.9 ft<sup>2</sup>  
58.33 m<sup>2</sup>

(1) Excluding balconies and terraces

While every attempt has been made to ensure accuracy, all measurements are approximate, not to scale. This floor plan is for illustrative purposes only.





## Lawrence Rand

Lawrence Rand, 106 Victoria Road - HA4 0AL

01895 632211

[Info@lawrence-rand.co.uk](mailto:Info@lawrence-rand.co.uk)

[www.lawrence-rand.co.uk/](http://www.lawrence-rand.co.uk/)



**LAWRENCE RAND**