



52 Hillcrest Gardens, Esher
£3,850 pcm

52 Hillcrest Gardens

Esher, Esher

A 1930's detached, four bedroom family home, conveniently located for access to Hinchley Wood's excellent schools and train station plus with a large, South-facing garden. EPC E
Council Tax band: G

Tenure: Freehold

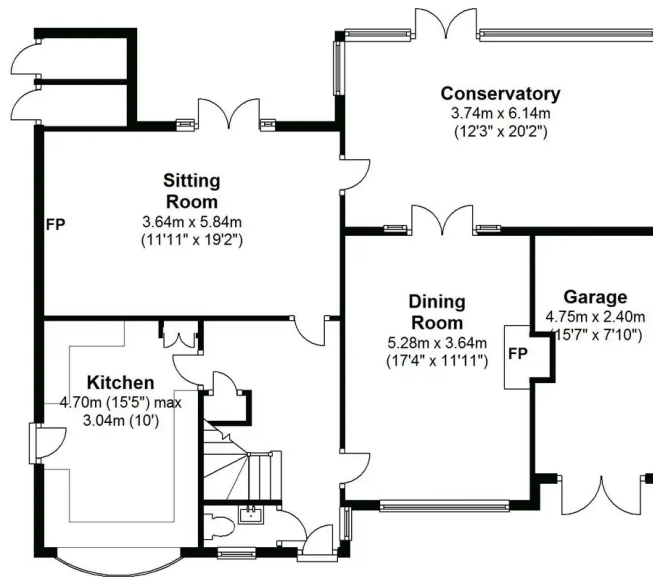
- Detached House
- Available unfurnished from 15th March
- Close to Schools and Station
- Four Bedrooms
- Three Reception Rooms
- Downstairs Cloakroom
- Two Bathrooms
- Off Street Parking & Garage
- South Facing Rear Garden
- EPC E





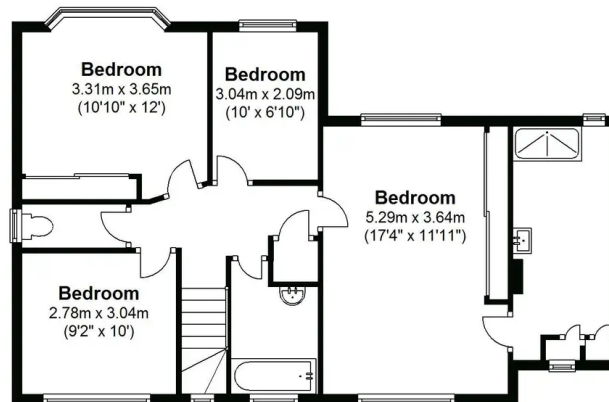
Ground Floor

Approx. 107.3 sq. metres (1154.8 sq. feet)



First Floor

Approx. 79.9 sq. metres (859.6 sq. feet)



Total area: approx. 187.2 sq. metres (2014.5 sq. feet)

All floorplans are provided for informational purposes only. Although we endeavour to provide truthful representation, we do not in any way warrant the accuracy of the floorplan information and the floorplan layout and measurements may contain errors and omissions. We are not liable for and do not accept any liability relating to any loss or damage suffered as a direct or indirect result of use of any information on our website.
Plan produced using The Mobile Agent.