



48 Dale Road, Hythe
£369,950



48 Dale Road

Hythe, Southampton

Nestled in the prominent Hollybank location, this charming 3 bedroom bungalow is a must-see for those seeking a comfortable and convenient living space. The property boasts gas fired heating and double glazing throughout, promising warmth and energy efficiency. Featuring two reception rooms, driveway parking, and a garage, this home offers plenty of space for families or those looking to entertain guests without hassle. The lack of an onward chain ensures a smooth and efficient purchasing process for the new owners. This property also has the potential to extend above and below! (STP)

Step outside to discover the beautiful outside space this property has to offer. The flat rear garden, mainly laid to lawn, is the perfect spot for relaxation or outdoor activities, with two decked areas providing ample space for al fresco dining or soaking up the sun. Additionally, a timber summer house with double doors, windows, and power offers a cosy retreat within your own home, ideal for hobbies or unwinding. The sloped driveway, with space for 3 to 4 cars, leads to a garage accessible through double gates, providing convenience and security for your vehicles. The tiered front patio area with crazy paving offers a charming entrance to the property, while a timber and Perspex storm porch with a bench welcomes you home. With a variety of outdoor spaces to enjoy, this property truly combines comfort and practicality for a delightful living experience.



1 Southward House
Dibden Purlieu SO45 4PT



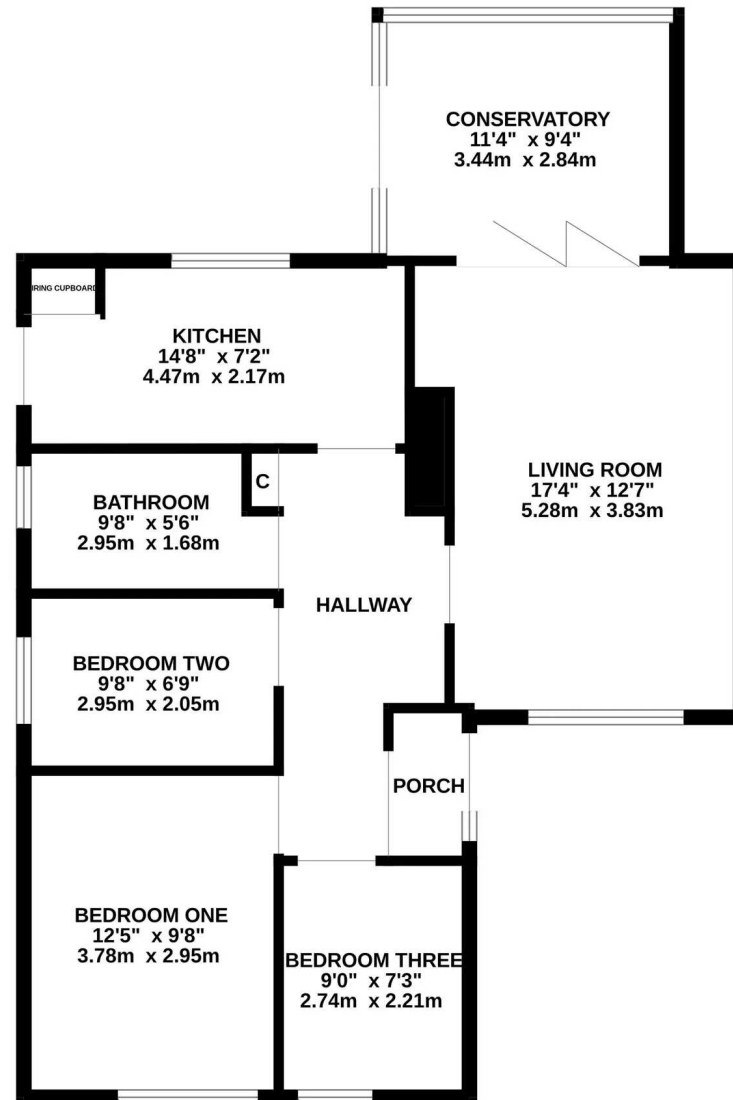
T: 02380 844405

info@anthonyjamesproperties.co.uk

excellent position on the outskirts of Hythe Village



GROUND FLOOR
817 sq.ft. (75.9 sq.m.) approx.



TOTAL FLOOR AREA : 817 sq.ft. (75.9 sq.m.) approx.

Whilst every attempt has been made to ensure the accuracy of the floorplan contained here, measurements of doors, windows, rooms and any other items are approximate and no responsibility is taken for any error, omission or mis-statement. This plan is for illustrative purposes only and should be used as such by any prospective purchaser. The services, systems and appliances shown have not been tested and no guarantee as to their operability or efficiency can be given.

Made with Metropix ©2024