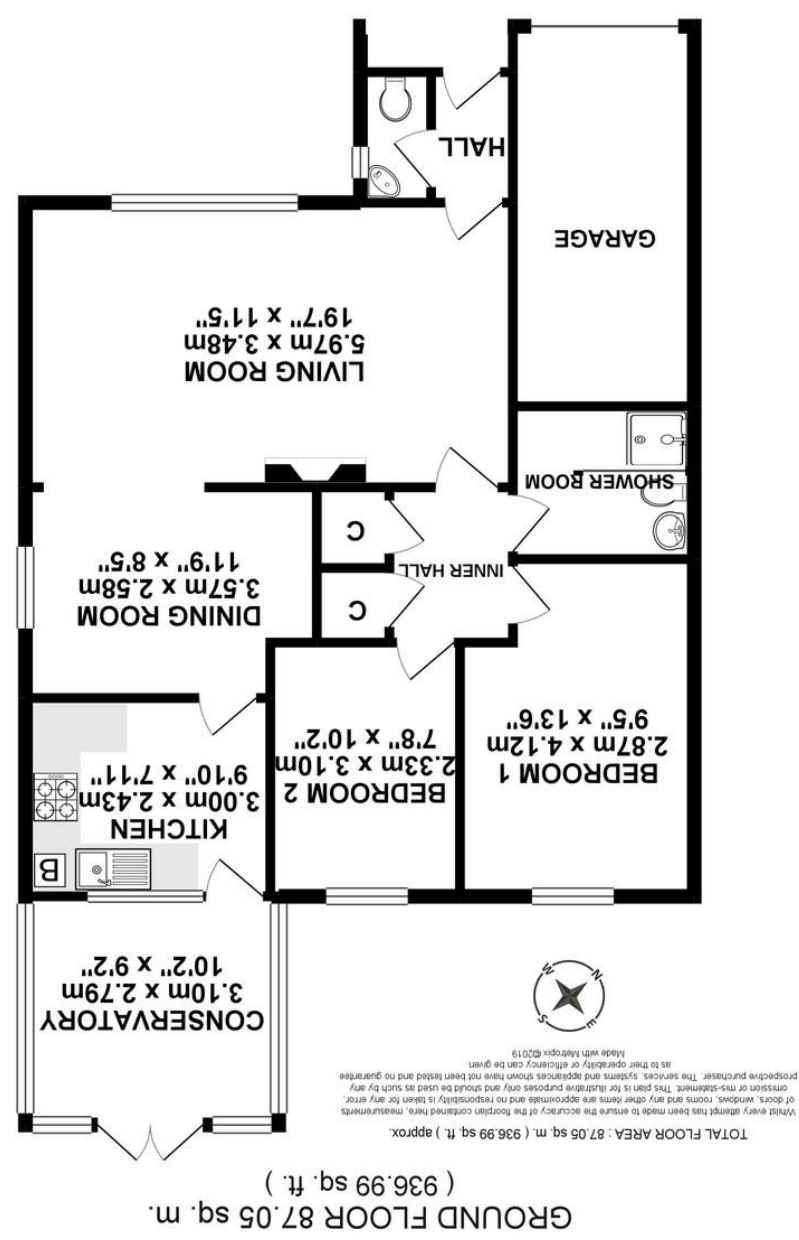


Agents Note: Whilst every care has been taken to prepare these sales particulars, they are for guidance purposes only. All measurements are approximate and whilst every care has been taken to ensure their accuracy, they should not be relied upon and potential buyers are advised to check the measurements themselves.



25 Bellott Drive, Corsham, Wiltshire, SN13 9UQ

David Ingram
RESIDENTIAL

25 Bellott Drive, Corsham, Wiltshire, SN13 9UQ

- Two bedroom detached bungalow
- UPVC double glazing and gas central heating
- Modern shower room
- Garage and driveway parking
- Good sized conservatory
- Neutral décor throughout
- Private, well enclosed garden
- NO ONWARD CHAIN

£285,000

Situation and Description

A modern detached bungalow situated within a popular and established residential area. The property benefits from uPVC double glazing, gas central heating, neutral décor and NO ONWARD CHAIN.

The property offers accommodation comprising entrance hall with cloakroom off, L-shaped sitting/dining room with feature fireplace, good sized conservatory opening onto the rear garden, kitchen, two bedrooms and a shower room with modern suite (formerly a bathroom).

Outside

Front
Easily maintainable gravelled garden with fence to side and gated access to rear.

Rear

Predominately lawned garden with good sized paved patio seating areas and small trees. The garden is well enclosed by fencing and hedging and enjoys a good deal of privacy.

Garage

Attached single unit with electric remote controlled door to front and door to side. Driveway parking in front for 1-2 cars.

Bellott Drive forms part of a popular development built in the 1980's, situated within easy walking distance of the local schools, and community campus incorporating the swimming pool, library, cafe and other leisure facilities. The picturesque high street is only a short walk further on and bus services to bath and Chippenham pick up close by on the Valley road.



Directions

From our office on the High Street turn right onto Pickwick Road, proceed over the first roundabout and at the second roundabout turn left onto Valley Road. Proceed down the hill and take the second right onto Hatton Way and then next left onto Bellott Drive where the property can be found on the left hand side.