



Glandore Jack Hill, Allithwaite

Grange-Over-Sands

- 5 Bed Detached House
- Views of Morecambe Bay and Cartmel Peninsula
- Large Double Garage with Mezzanine Storage
- Solid Oak Floors Throughout
- No Chain
- Large Driveway For Multiple Vehicles

Guide Price £750,000



Glandore Jack Hill

Allithwaite, Grange-Over-Sands

Welcome to this stunning 5 bedroom detached house, boasting solid oak floors and staircase throughout. This exquisite property is split over 3 floors and dates back to around 2000. Originally built by a renowned local building contractor for his own occupation, it is a true testament to quality craftsmanship.

Upon arrival, you will be greeted by a large block paved driveway and ample parking area, ensuring convenience for you and your guests. As you step inside, prepare to be captivated by the panoramic views this property offers across the Cartmel Peninsula to Morecambe Bay.

The interior of this home is finished to the highest standard, with attention to detail evident in every room. The spacious and bright living areas exude elegance and provide an ideal space to relax or entertain. The open layout seamlessly blends the living, dining, and kitchen areas, creating a seamless flow between rooms.

With 5 generously sized bedrooms, this property offers comfort and privacy for the whole family. The master suite boasts its own en-suite bathroom, adding a touch of luxury to every-day living.

Don't miss the opportunity to make this exceptional property your new home. Contact us today to arrange a viewing and experience the epitome of refined living.

Hallway / Entrance

6' 4" x 14' 8" (1.93m x 4.48m)

Large entrance Hallway, doors leading to Garage, Study and Cloakroom. Also stairs lead to Lower Ground Floor and Upper Floor.

Cloakroom

7' 5" x 4' 2" (2.25m x 1.27m)

Ample hanging space, and boot bench. Loft access and a small radiator, accessed via Hallway.

Study

9' 8" x 7' 6" (2.95m x 2.29m)

Solid oak floor. UPVC double glazed window. Radiator and telephone point.

Garage

15' 8" x 17' 3" (4.78m x 5.25m)

Large Double Garage, electric up and over door and a large mezzanine storage/office space. Can also be accessed via the Hallway.

Kitchen

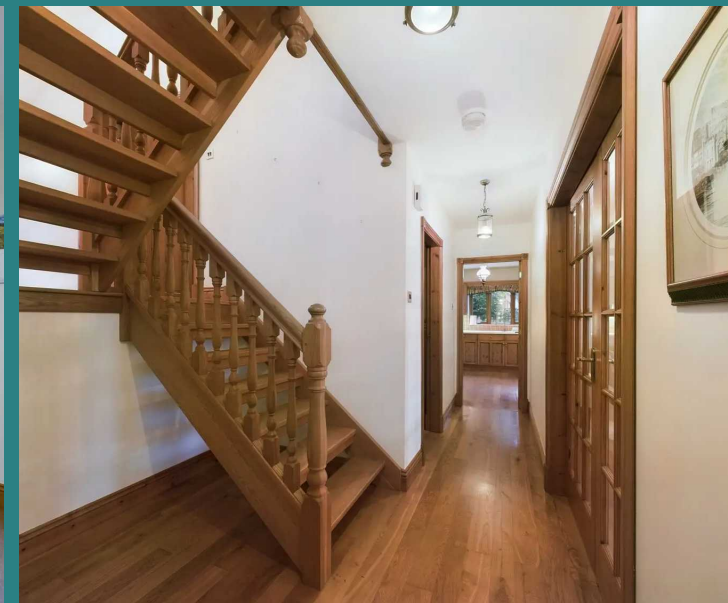
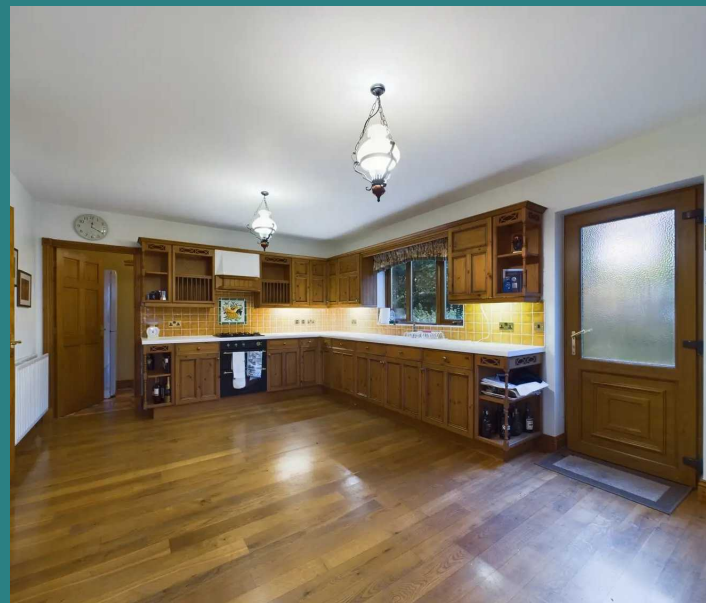
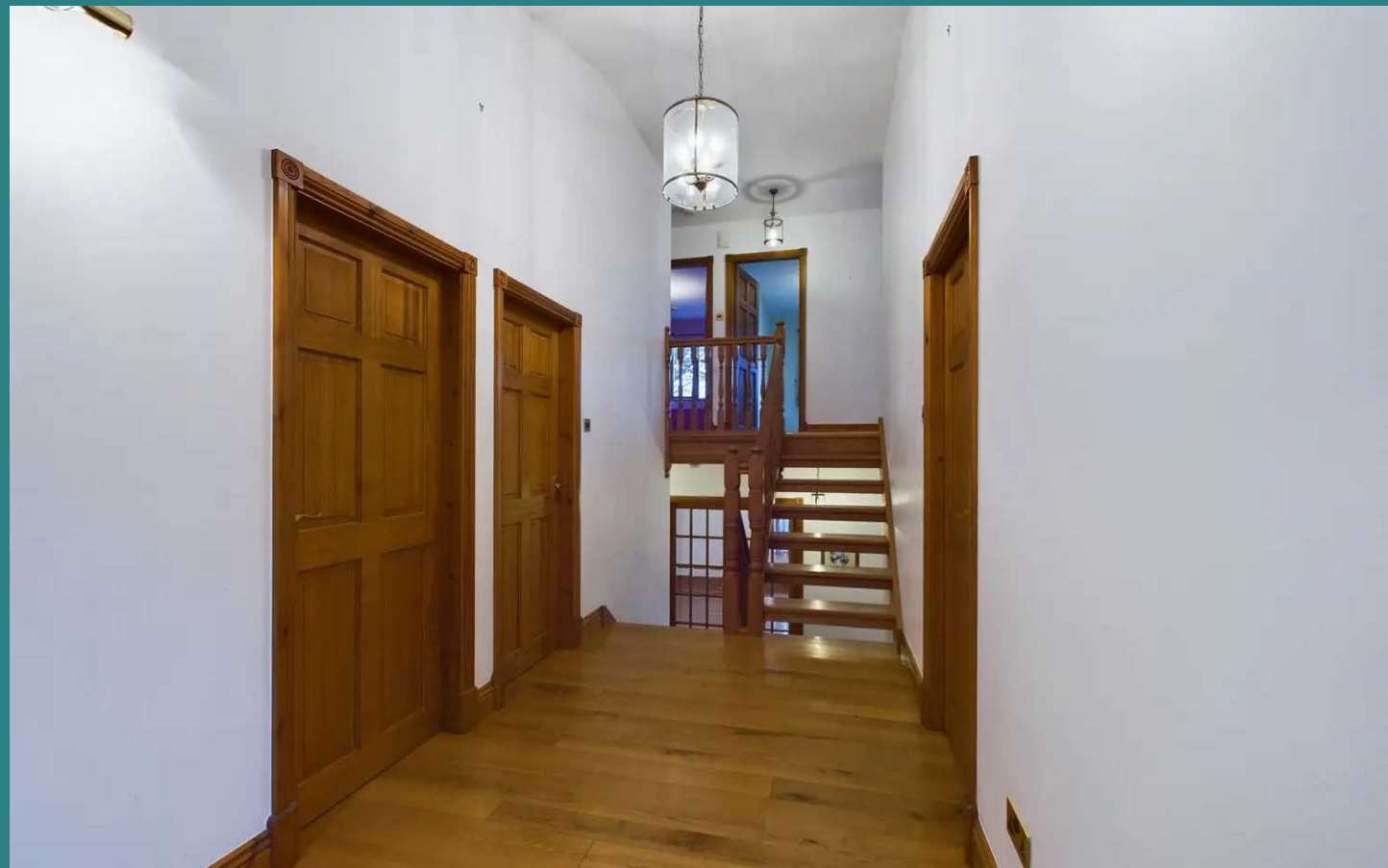
11' 10" x 17' 0" (3.61m x 5.17m)

Located on the lower the ground floor the Kitchen can be accessed via the Hallway and also through an external side door. This space offers an abundance of storage with ample base and wall units with complementary decorative tiles. Double Colonial oven with grill, gas four ring hob, built in Hotpoint dishwasher, undercounter fridge. Solid Oak floor with window overlooking the side of the property and door leading into Conservatory.

Utility Room

11' 7" x 4' 9" (3.54m x 1.46m)

Accessed via the Kitchen featuring tiled effect flooring, space for washing machine and dryer, and also an upright fridge/freezer. Worcester Boiler.





Conservatory

15' 7" x 10' 6" (4.74m x 3.19m)

The Conservatory boasts an oak floor with feature stain glass windows, it overlooks the garden with fantastic views. The room is equipped with a radiator, aerial point, and wall lights.

w/c

6' 3" x 4' 7" (1.91m x 1.40m)

The W/C is accessed from the Hallway on the Lower Ground Floor with oak flooring, a radiator, a wash/hand basin, and decorative tiling.

Living Room

17' 8" x 13' 9" (5.38m x 4.20m)

A spacious light room also on the Lower Ground Floor. Windows look out onto the rear garden. Ariel point, telephone point and various sockets. Solid Oak Floor.

Bedroom 5 / Dining Room

12' 2" x 12' 2" (3.72m x 3.72m)

Light and bright room, adjacent to the Living Room this space would work well as a Dining Room or a 5th Bedroom. Dual aspect windows looking onto the Garden.

Bedroom 3

8' 7" x 13' 9" (2.61m x 4.19m)

Double Bedroom, with views out to the Cartmel Peninsula and Morecambe Bay. Built in storage and shelving, radiator, tv and phone points.

Bedroom 4

8' 6" x 13' 4" (2.60m x 4.06m)

Double Bedroom, with views out to the Cartmel Peninsula and Morecambe Bay. Built in storage and shelving, radiator, telephone and aerial points.

Bedroom 2

12' 2" x 12' 3" (3.72m x 3.73m)

Dual aspect double bedroom, with far reaching views. Built in wardrobe and storage. Telephone and aerial point.



Bedroom 1

11' 10" x 12' 11" (3.61m x 3.94m)

Double bedroom, with views. Recessed cupboard with shelving. Door to En-Suite. Telephone and ariel points.

En- Suite

8' 2" x 5' 11" (2.49m x 1.81m)

En Suite with walk in shower, W/C and hand basin.

Decorative tiles.

Bathroom

12' 4" x 7' 9" (3.77m x 2.35m)

Spacious Bathroom, with Jacuzzi bath and seperate walk in shower. W/C, Vanity wash hand basin and large frosted glass window to rear. Decorative tiles.







Ground Floor



Landing & First Floor



Garage Mezzanine


Approximate total area⁽¹⁾

2267.93 ft²
210.70 m²

Reduced headroom

25.93 ft²
2.41 m²

⁽¹⁾ Excluding balconies and terraces

 Reduced headroom
(below 1.5m/4.9ft)

While every attempt has been made to ensure accuracy, all measurements are approximate, not to scale. This floor plan is for illustrative purposes only.



Arnold Greenwood Estate Agents

5 Lowther Gardens, Grange-Over-Sands - LA11 7EX

015395
38077 • grange@arnoldgreenwood.co.uk • www.arnoldgreenwoodestateagency.co.uk/