



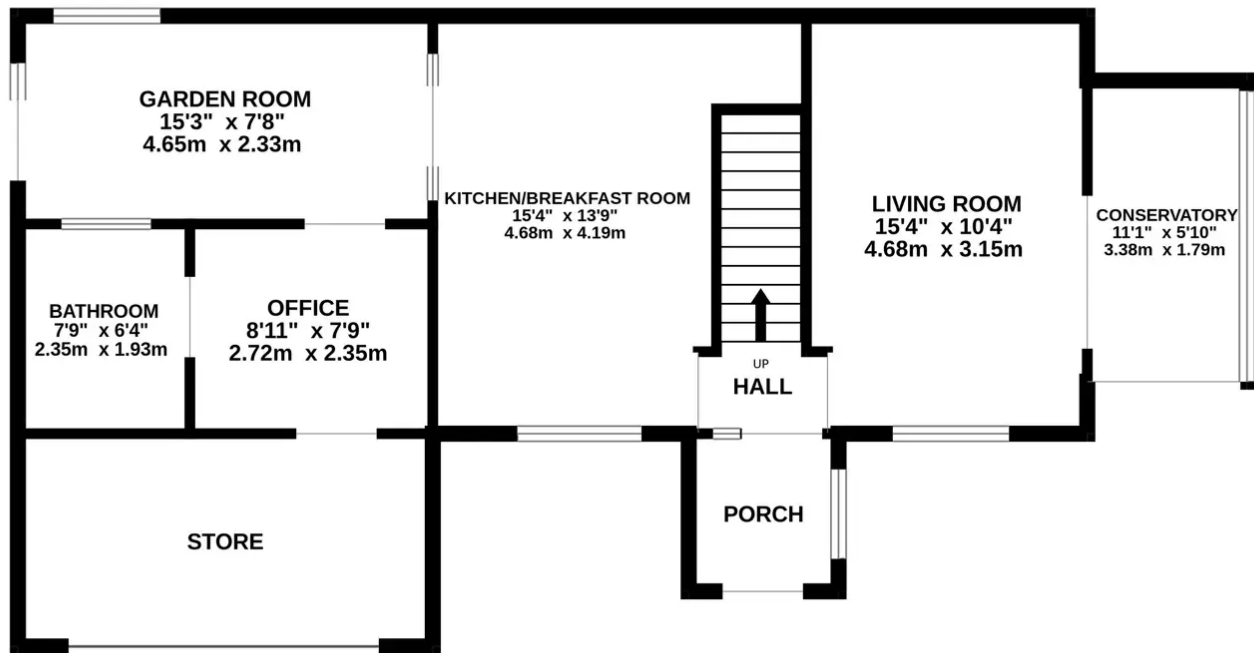
135 Beech Crescent, Hythe - SO45 3QE

£299,950 Freehold

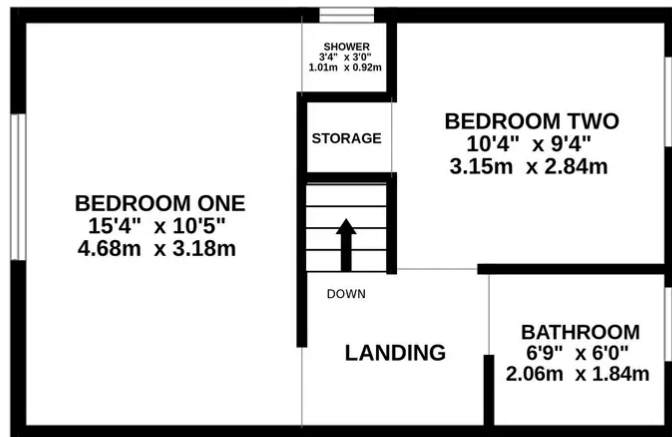
Positioned on the outskirts of Hythe, this 2-bedroom semi-detached house is rather unique. Boasting a spacious block paved driveway for several cars, two side gardens, and double glazing throughout, this property offers versatility. With gas fired central heating, two bathrooms, and three reception rooms, you'll have all the space you need to relax or entertain.

Step outside and discover the low maintenance outside space that comes with this property. To the left, a low-maintenance garden with patio and block paved areas awaits, along with a raised decking area perfect for unwinding. Need extra storage? No problem, with a timber storage shed and a brick-built log store. To the right, a garden with a mix of lawn, palm tree, and well-established hedge rows offers a blank canvas for your green-fingered dreams. Plus, the large cobble-style block paved driveway provides ample space for parking.

GROUND FLOOR
820 sq.ft. (76.2 sq.m.) approx.



1ST FLOOR
370 sq.ft. (34.3 sq.m.) approx.



TOTAL FLOOR AREA : 1190 sq.ft. (110.5 sq.m.) approx.

Whilst every attempt has been made to ensure the accuracy of the floorplan contained here, measurements of doors, windows, rooms and any other items are approximate and no responsibility is taken for any error, omission or mis-statement. This plan is for illustrative purposes only and should be used as such by any prospective purchaser. The services, systems and appliances shown have not been tested and no guarantee as to their operability or efficiency can be given.
Made with Metropix ©2024

You can include any text here. The text can be modified upon generating your brochure.



1 Southward House
Dibden Purlieu SO45 4PT



T: 02380 844405
info@anthonyjamesproperties.co.uk