



30 Seaton Place, St Helier

BROADLANDS

FINDING YOU A HOME SINCE 1972

30 Seaton Place

St Helier, Jersey

- Two bedroom, one bathroom property
- Own separate entrance with no one living above or below
- Convenient central location
- Plenty of natural light with skylights throughout
- Modern fully integrated kitchen
- Electric modern radiators throughout
- Sole agent
- Contact James on 07829 835076



30 Seaton Place

St Helier, Jersey

Welcome to this cosy 2-bedroom, 1-bathroom apartment located in a central area, perfect for urban living. With its own separate entrance and no neighbours above or below, you'll have all the privacy you need. The modern interior is flooded with natural light thanks to skylights scattered throughout the space, creating a bright and airy atmosphere.

There is a fully integrated kitchen and modern electric radiators that provide efficient heating in every room.

As the sole agent for this property to schedule a viewing or ask any questions, reach out to James at 07829 835076.





Living

Large open plan lounge / kitchen at the front of the property. Plenty of natural light from 2 large windows and the sky light. Fully integrated modern kitchen with electric appliances.

Sleeping

Two double bedrooms, the primary has plenty of built in wardrobe space and a sky light. Second bedroom is at the rear. Bathroom off the landing with 3 piece suite and another sky light.

Outside

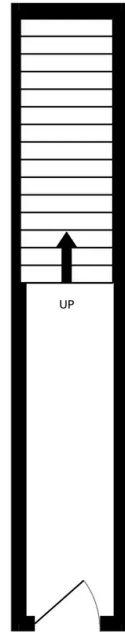
Own separate entrance off Seaton Place with hallway and then stairs going up to the property.

Services

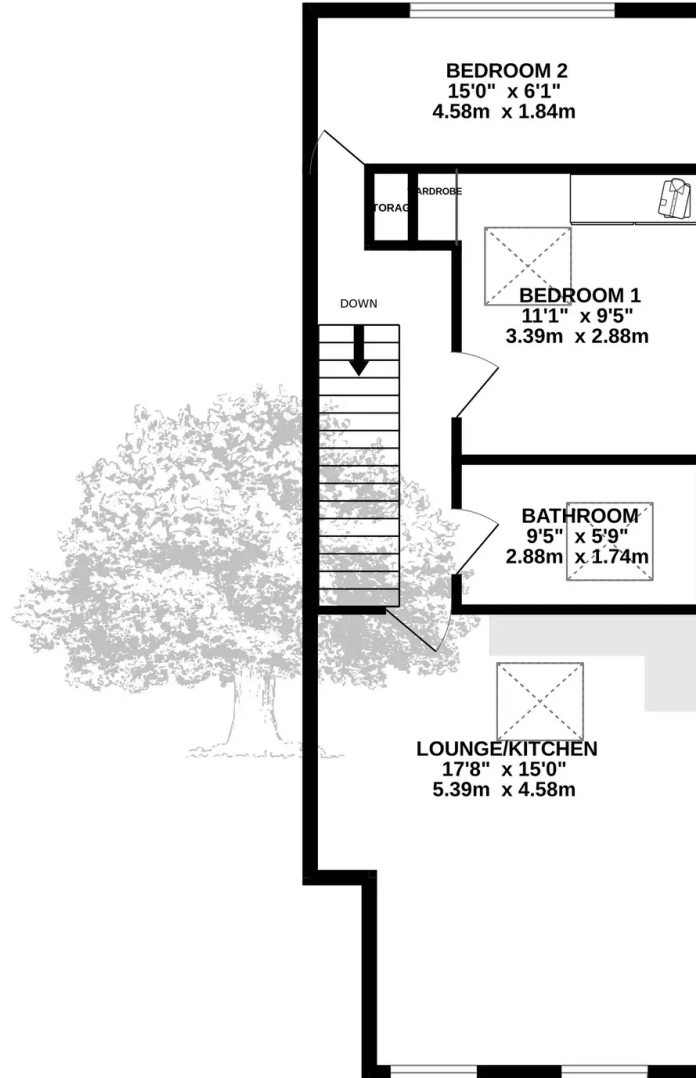
All mains services excluding gas. Fully double glazed. Modern electric radiators throughout. Wired for fibre.



GROUND FLOOR
92 sq.ft. (8.5 sq.m.) approx.



1ST FLOOR
593 sq.ft. (55.1 sq.m.) approx.



TOTAL FLOOR AREA : 685 sq.ft. (63.6 sq.m.) approx.

Whilst every attempt has been made to ensure the accuracy of the floorplan contained here, measurements of doors, windows, rooms and any other items are approximate and no responsibility is taken for any error, omission or mis-statement. This plan is for illustrative purposes only and should be used as such by any prospective purchaser. The services, systems and appliances shown have not been tested and no guarantee as to their operability or efficiency can be given.
Made with Metropix ©2024



Broadlands

Broadlands Estates, Library Place - JE2 3NL

01534 880770 • enquiries@broadlandsjersey.com • www.broadlandsjersey.com/

BROADLANDS

FINDING YOU A HOME SINCE 1972