

SINCE 1972 FINDING YOU A HOME
B



Unit 3, 10A Sligo Lane, Aquila Road, St. Helier
£375,000

BROADLANDS

FINDING YOU A HOME SINCE 1972

Unit 3, 10A Sligo Lane, Aquila Road

St. Helier, Jersey

A 1st floor apartment overlooking the communal courtyard briefly comprising of a large open plan kitchen/lounge diner, double bedroom and a house bathroom with walk-in shower.

- 1st floor 1 bedroom apartment
- Open-plan living space
- Bespoke fitted kitchen and bathroom
- Superb courtyard setting on the outskirts of town
- Vacant and available immediately
- Contact Tony on 07797726677 or Tony@broadlandsjersey.com





Living

Open plan kitchen/lounge/diner with bespoke fitted kitchen, vaulted ceiling and Bosch integrated appliances.

Sleeping

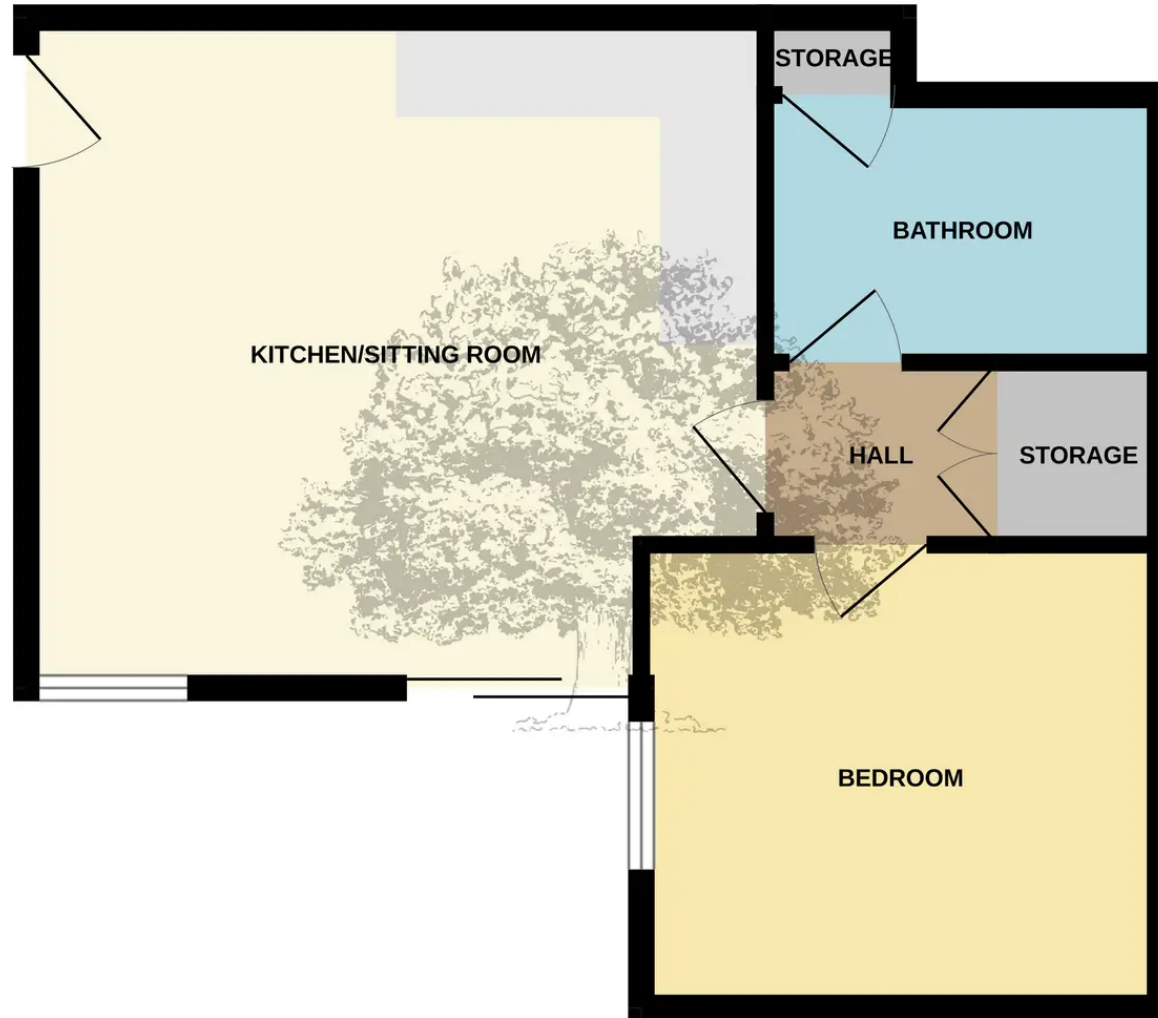
Large double bedroom. House bathroom with walk-in shower, heated towel rail, vanity mirror and bespoke basin and drawer unit.

Services

All mains. Electric heating. Bespoke floor coverings and carpets. Fibre broadband. Large external storeroom with security keypad. Separate communal bin store. Bosch integrated appliances including white goods. Electric radiators in all rooms.



FIRST FLOOR
592 sq.ft. (55.0 sq.m.) approx.



TOTAL FLOOR AREA : 592 sq.ft. (55.0 sq.m.) approx.

Whilst every attempt has been made to ensure the accuracy of the floorplan contained here, measurements of doors, windows, rooms and any other items are approximate and no responsibility is taken for any error, omission or mis-statement. This plan is for illustrative purposes only and should be used as such by any prospective purchaser. The services, systems and appliances shown have not been tested and no guarantee as to their operability or efficiency can be given.
Made with Metropix ©2024



1912 · FINDING YOU A HOME SINCE

B

Broadlands

Broadlands Estates, Library Place - JE2 3NL

01534 880770 • enquiries@broadlandsjersey.com • www.broadlandsjersey.com/

BROADLANDS

FINDING YOU A HOME SINCE 1972