



4 Park Place, Tunnell Street, St. Helier

Asking **£360,000**

BROADLANDS

FINDING YOU A HOME SINCE 1972

4 Park Place, Tunnell Street

First floor one bed apartment

- First floor one double bed apartment
- Fantastic new development by Style Homes
- A stones throw away from Millennium Park
- Spacious living room
- Linear Avant handleless kitchen with Neff appliances and feature lighting
- Bedroom with fitted wardrobe
- Contemporary bathroom with three piece suite
- Separate cloakroom and utility cupboard
- Walk to work
- Quiet town location
- WhatsApp Don 07829 917172 /
don@broadlandsjersey.com



4 Park Place, Tunnell Street

First floor one bed apartment

A first floor, one double bedroom apartment comprising spacious open plan living room/kitchen, double bedroom with dressing room and ensuite bathroom, separate cloakroom and utility cupboard.

As you would expect with a Style Homes development, the apartment is finished to a very high standard providing contemporary living at its very best. Call Broadlands now to view.





Living

Comfortable living room and fully fitted kitchen with integrated Neff appliances including induction hob, extractor, oven, microwave, fridge/freezer and dishwasher. Access to bedroom, bathroom, cloakroom and utility.

Sleeping

Double bedroom with fitted wardrobe. Window to front. Bathroom with three piece suite comprising bath, with shower over, basin and WC. Seperate cloakroom.

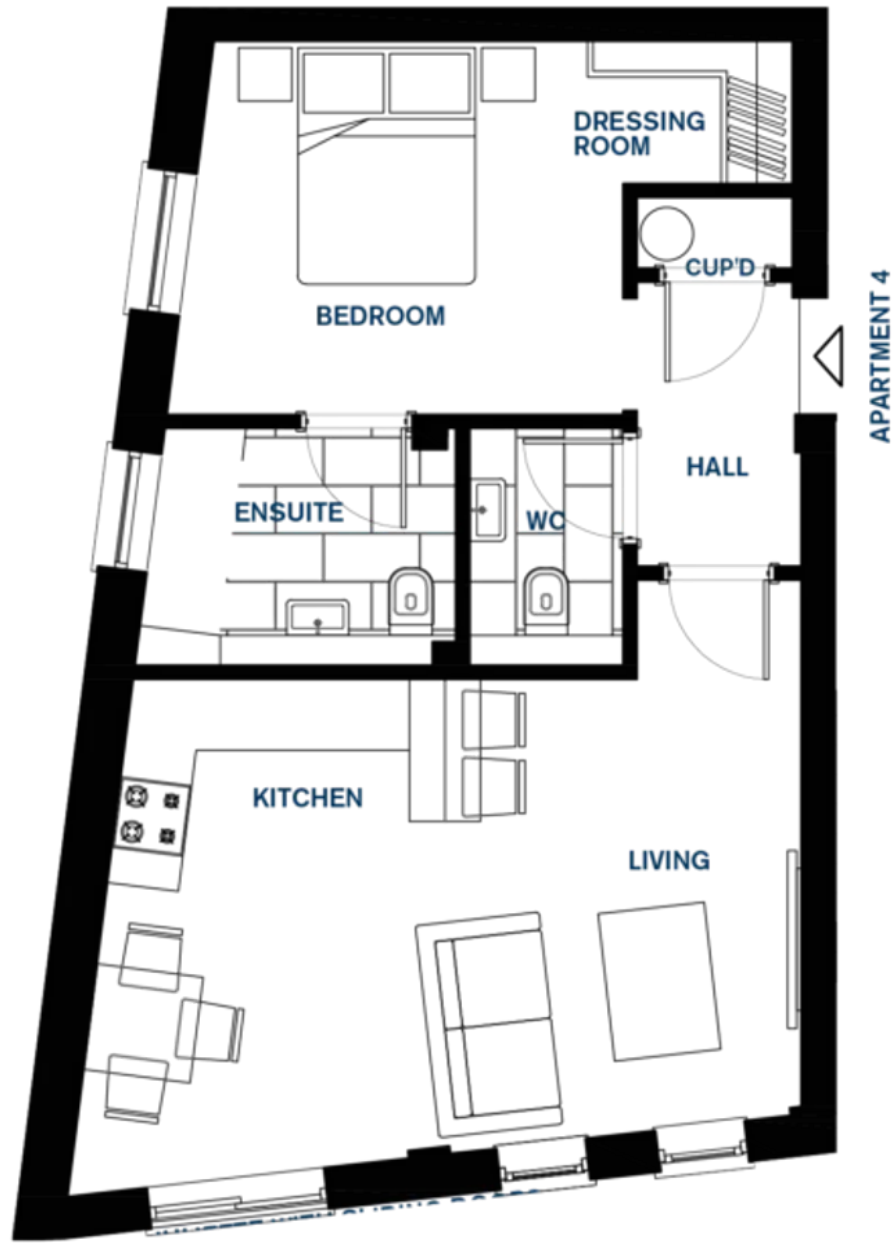
Outside

Millennium Park is a stones throw away.

Services

All mains excluding gas. Service charge £116.35 per month covers building insurance and power in the communal areas. Electric E20 heating. Electric low tariff E20 hot water cylinder with secondary immersion heater. German manufactured full double glazing. Underfloor heating in bathroom and ensuite. Video door entry system.







Broadlands

Broadlands Estates, Library Place - JE2 3NL

07829 917172 • don@broadlandsjersey.com • www.broadlandsjersey.com/

BROADLANDS

FINDING YOU A HOME SINCE 1972