



MILE



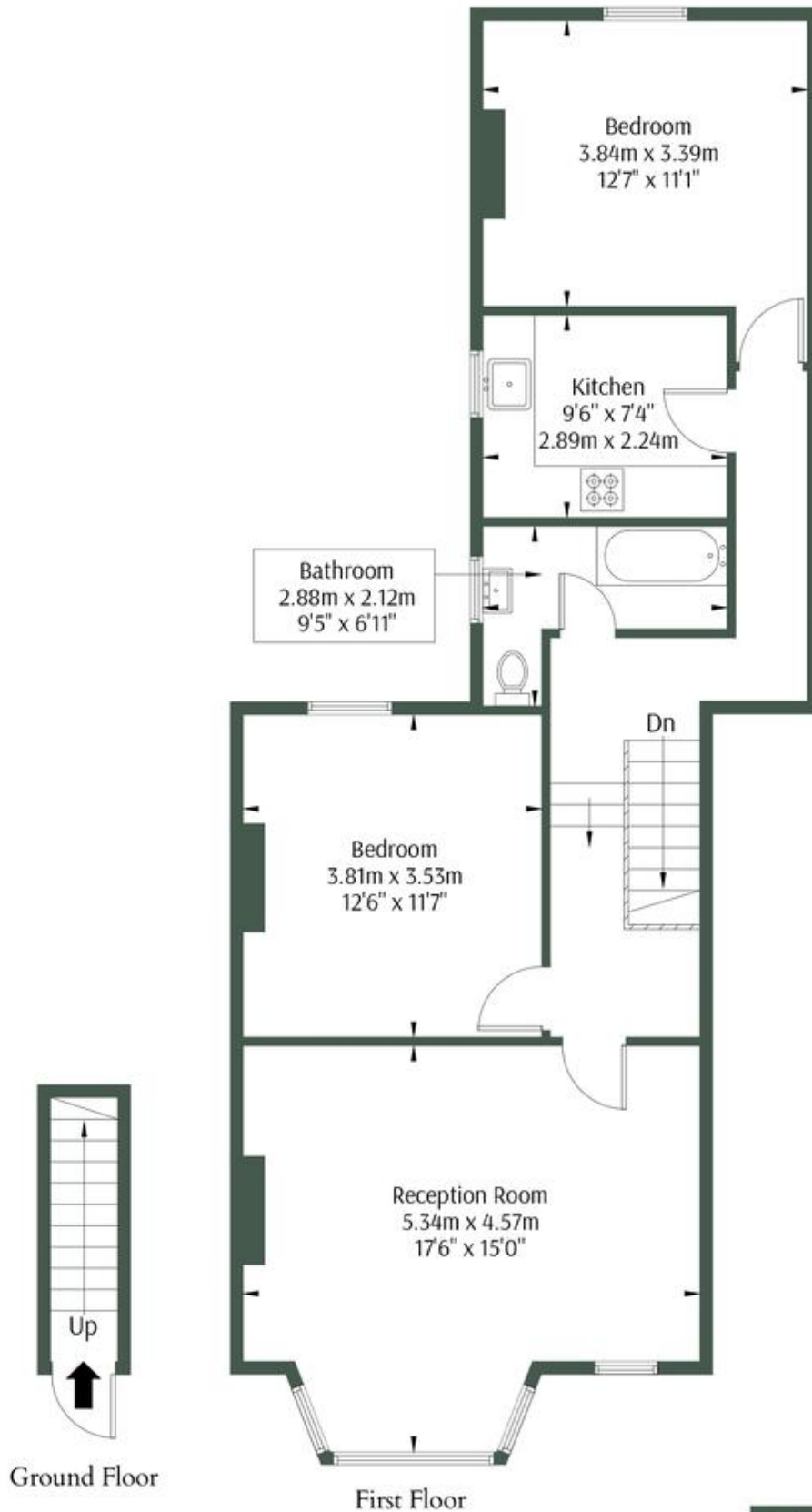
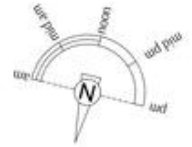
Bathurst Gardens, London NW10 OIEO £500,000 Share of Freehold

Welcome to Bathurst Gardens, where urban sophistication meets suburban tranquillity! This exquisite property presents a rare opportunity to own a two-bedroom first-floor apartment located at the end of a charming terrace. Upon entering, you'll be greeted by a bright and airy interior, thanks to the generous square footage that offers ample space for comfortable living. The layout is thoughtfully designed to maximize functionality while maintaining a sense of openness and freedom. One of the standout features of this delightful abode is its potential for expansion, subject to obtaining the necessary planning permissions. With the option to extend, you have the opportunity to tailor the space to your exact specifications, creating the home of your dreams. Nestled within this desirable terrace, residents can enjoy a sense of privacy and serenity while still being conveniently located near all the amenities and attractions that Bathurst Gardens has to offer. Whether you're relaxing in the spacious living area, cooking up a storm in the modern kitchen, or unwinding on the balcony, every corner of this apartment exudes comfort and style. Don't miss your chance to make this exceptional property your own. Welcome home to Bathurst Gardens, where endless possibilities await.

- Victorian home
- End of terrace
- First floor apartment
- Potential to extend (STPP)
- Chain free
- Great potential
- 833 sq ft
- Bright and airy
- Great location
- Close to shops and restaurants

Bathurst Gardens, NW10 5JJ

Approx Gross Internal Area = 77.4 sq.m / 833 sq.ft



The Floor plan is not to scale and measurements and areas shown are approximate and therefore should be used for

MONEY LAUNDERING REGULATIONS 2003: Intending purchasers will be asked to produce identification documentation at a later stage and we would ask for your co-operation in order that there will be no delay in agreeing the sale.

General: While we endeavour to make our sales particulars fair, accurate and reliable, they are only a general guide to the property and, accordingly, if there is any point which is of particular importance to you, please contact the office and we will be pleased to check the position for you, especially if you are contemplating travelling some distance to view the property.

Measurements: These approximate room sizes are only intended as general guidance. You must verify the dimensions carefully before ordering carpets or any built-in furniture.

Services: Please note we have not tested the services or any of the equipment or appliances in this property, accordingly we strongly advise prospective buyers to commission their own survey or service reports before finalising their offer to purchase.