

THE BOSTON

4 BEDROOM HOUSE

HOUSES 2, 7, 13, 16*, 17* & 37

Total Area 131.4 sq m (1,414 sq ft)

GROUND FLOOR

Kitchen	3.07m x 2.85m	10' 1" x 9' 4"
Living	5.70m x 3.50m	18' 7" x 11' 6"
Family / Dining	5.97m x 3.33m	19' 6" x 10' 9"

FIRST FLOOR

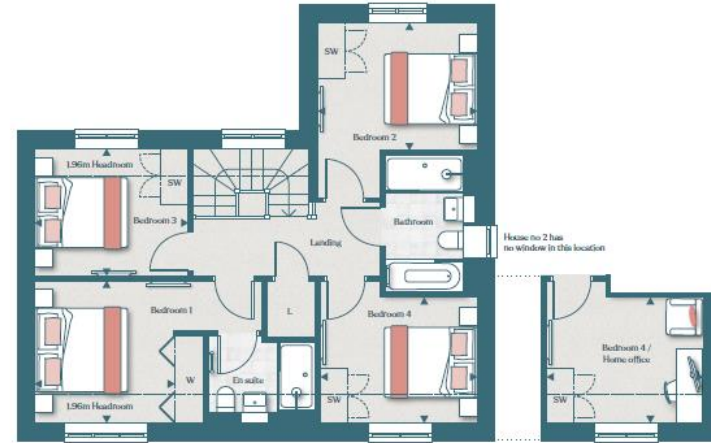
Bedroom 1	3.10m x 3.00m	10' 2" x 9' 9"
Bedroom 2	2.80m x 3.50m	9' 2" x 11' 6"
Bedroom 3	2.80m x 3.40m	9' 2" x 11' 2"
Bedroom 4 / Home office	2.80m x 3.44m	9' 2" x 11' 2"



GROUND FLOOR

*House 2, 7, 13 & 37 are as shown above, houses 16 & 17 are as above but handed.

Artist's impression, for illustrative purposes only. Facade and roof details may vary. Floorplans shown are for approximate measurements only. Exact layouts and sizes may vary. All measurements may vary within a tolerance of 5%. The dimensions are not intended to be used for carpet sizes, appliance sizes or items of furniture. Furniture layouts are indicative only. Kitchen layout indicative only. Garden and patio sizes may vary. Please ask Sales Consultant for further information. Floorplans have been sized to fit the page, as a result this plan may not be at the same scale as plans on other pages.



FIRST FLOOR

◆ Measurement Points C Cupboard W Wardrobe SW Space for Wardrobe L Linen Cupboard SWM Space for Washing Machine