



Woolsthorpe Close, Melton Mowbray

£229,950



This attractive two-bedroom, modern Georgian style property offers a character home with modern luxury. Externally the property benefits from two allocated parking spaces and a landscaped West facing rear garden.

Located to the North of Melton Mowbray, this lovely home offers generous proportions with a quality finish.

The property provides an entrance hall, an excellent sized but cosy living room, a kitchen/diner with Amtico flooring, a good range of floor and wall units, a selection of integrated appliances and French doors to the patio and enviable landscaped rear garden, there is also a cloakroom on the ground floor.

The first floor offers two generous size bedrooms and a well-appointed family bathroom.

Tenure: Freehold

All mains' services

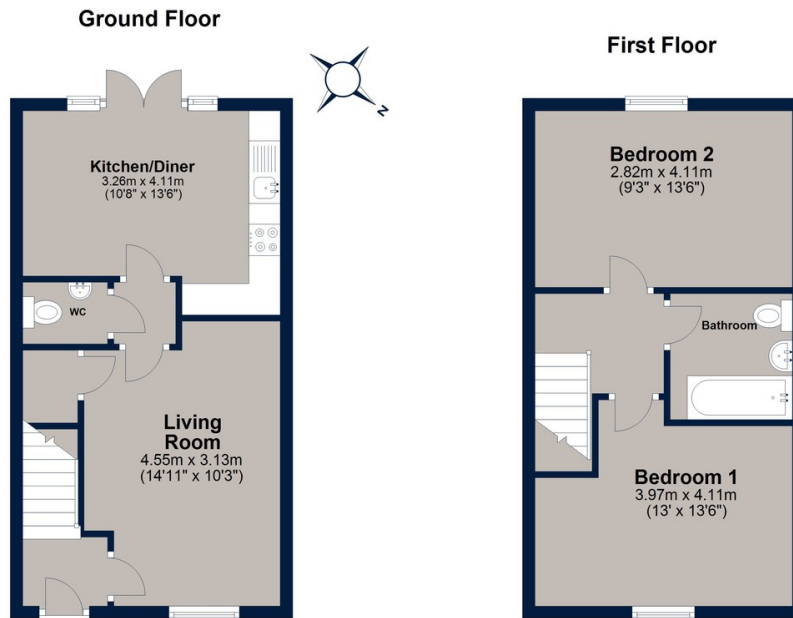
Council Tax Band: B

Please note there is a maintenance charge on this development.





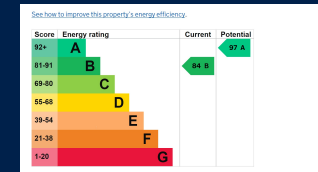
Woolsthorpe Close, Melton Mowbray



Total area: approx. 65.0 sq. metres (699.5 sq. feet)

Plan is for illustration purposes only and may not be representative of the property. Plan is not to scale. Plan produced by M-Photo
Plan produced using PlanUp.

This attractive two-bedroom, modern Georgian style property offers a character home with modern luxury. Externally the property benefits from two allocated parking spaces and a landscaped West facing rear garden.



Osprey Oakham
4 Burley Road
Oakham
Rutland LE15 6DH
01572 756675
oakham@osprey-property.co.uk

Osprey Stamford
7 Red Lion Street
Stamford
Lincolnshire, PE9 1PA
01780 769269
stamford@osprey-property.co.uk

Osprey Oundle
6 Crown Court
Market Place
Oundle, PE8 4BQ
01832 272225
oundle@osprey-property.co.uk

Osprey Melton
8 Burton Road
Melton
Leicestershire, LE13 1AE
01664 778170
melton@osprey-property.co.uk



Agents Note: Whilst every care has been taken to prepare these particulars, they are for guidance purposes only. All measurements are approximate, and are for general guidance purposes only and whilst every care has been taken to ensure their accuracy, they should not be relied upon, and potential buyers/tenants are advised to recheck the measurements