



21 Earles Meadow, Horsham

Guide Price £635,000

21 Earles Meadow

Horsham, Horsham

A modern family home that is situated in a quiet position in North East Horsham with access to Horsham town centre, nearby Littlehaven mainline train station, a selection of well regarded local schools and countryside walks. This property has a superb blend of living and bedroom space arranged over two floors and has been renovated through out and is presented to a superb standard. To the ground floor; the main social hub of this family home is the open plan kitchen/dining/family room, the kitchen has a range of handleless units with a white gloss finish and the clever use of curved cabinetry, there is a sit up breakfast bar, a range of quality integrated appliances and granite work surfaces.

Adjacent to the kitchen/family room is a light and airy garden room/conservatory where you can enjoy views over the landscaped garden, it is ideal as a relaxing space or could double as a separate dining room. The main sitting room enjoys an aspect to the front of the property and has a Box-Bay window providing a light and airy feel. The main bedroom enjoys views over the rear garden and has a selection of fitted wardrobe space, the en-suite is presented to a modern finish and has a shower, low level WC and a wash hand basin.

Bedroom two is of very generous proportions and is ideal as a teenagers room with fitted wardrobes, there are two further bedrooms plus a well equipped family bathroom which has a wall mounted shower over the bath, a low level WC and basin - all presented to a contemporary style and complimented with chrome fittings.

- Four Bedrooms Two Bathrooms
- Beautifully Presented Throughout
- Modern Kitchen

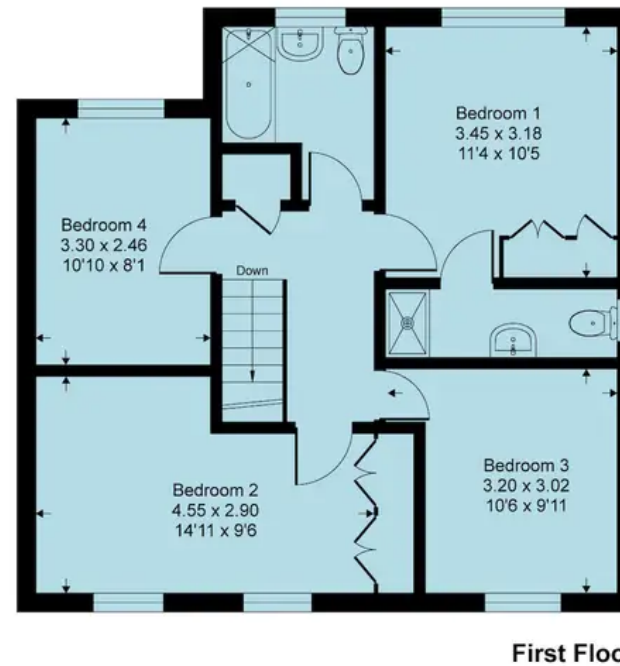
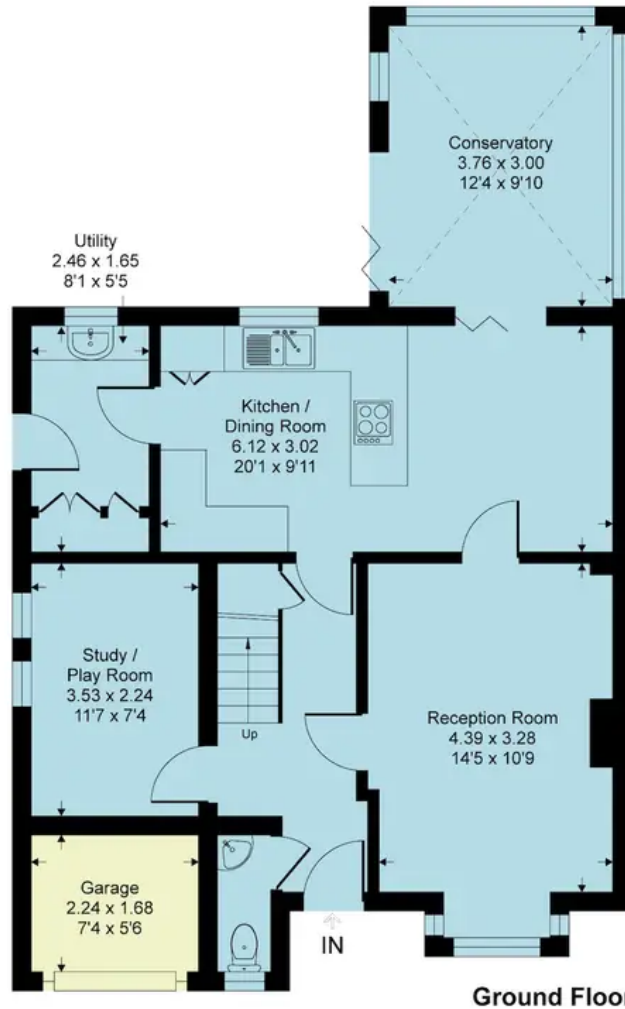


Earles Meadow, RH12

Approximate Gross Internal Area = 125 sq m / 1354 sq ft

Approximate Garage Internal Area = 4 sq m / 44 sq ft

Approximate Total Internal Area = 129 sq m / 1398 sq ft



This floor plan is for representation purposes only as defined by the RICS code of Measuring Practice (and IPMS where requested) and should be used as such by any prospective purchaser. Whilst every attempt has been made to ensure the accuracy contained here, the measurement of doors, windows and rooms is approximate and no responsibility is taken for any error, omission or mis-statement. Specifically no guarantee is given on the total area of the property if quoted on the plan. Any figure provided is for guidance only and should not be used for valuation purposes.

Copyright Within Walls. 2024 - Produced for Henry Adams



Henry Adams - Horsham

Henry Adams HRR Ltd, 50 Carfax, Horsham - RH12 1BP

01403 253271

horsham@henryadams.co.uk

www.henryadams.co.uk/

Agents Note - Our particulars are for guidance only and are intended to give a fair overall summary of the property. They do not form part of any contract or offer, and should not be relied upon as a statement or representation of fact. Measurements, areas and distances are approximate only. Photographs may include lifestyle shots and pictures of local views. No undertaking is given as to the structural condition of the property, or any necessary consents or the operating ability or efficiency of any service, system or appliance. Please ask if you would like further information, especially before you travel to the property.