



Devonshire Drive | North Anston | S25 4AP

Guide Price of £210,000 to £220,000

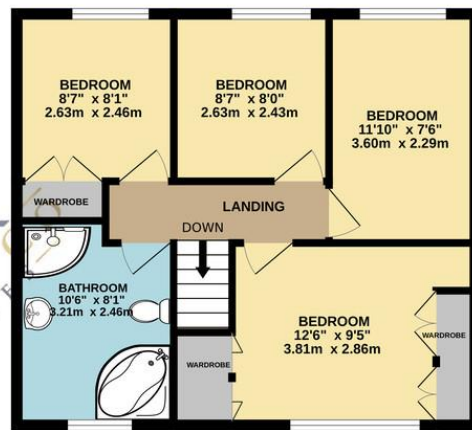
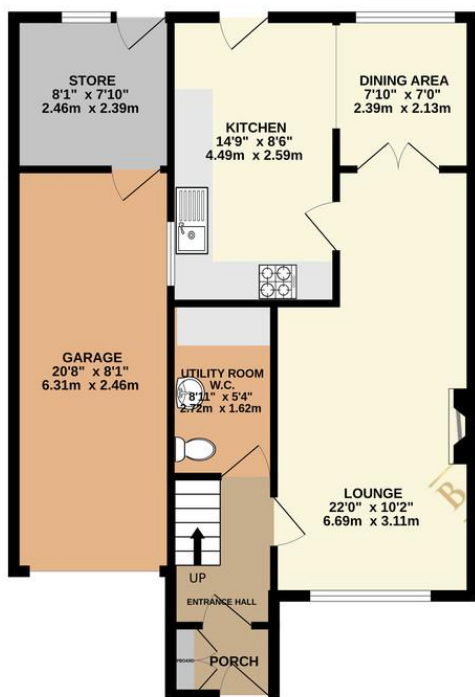
Bell & Co Estates are delighted to present this spacious Four Bedroom Semi-Detached home on this popular estate in North Anston. In brief the property comprises of Porch leading into a spacious Hallway with Utility Room with WC, leading into the large front facing Lounge with double doors into the Dining Area and separate door into the fitted Kitchen with door to access the rear. To the upstairs are great sized Bedrooms, master with fitted wardrobes and a family Bathroom with large corner Bath, Sink unit, WC and separate Shower. To the front of the property there is a driveway providing off road parking which leads to a carport/Garage area with storeroom to the rear. To the rear of the property is an enclosed garden which is mainly laid to lawn, with lovely views over the grassed area beyond the garden. Close to local amenities, schools, and transport links this home is in a prime location and viewing is highly recommended to fully appreciate what is on offer.

- Four Bedroom Semi Detached
- Kitchen with Dining Area
- Large Lounge
- Good Size Bedrooms
- Master Bedroom with Fitted Wardrobes
- Large Bathroom
- Off Road Parking
- Enclosed Rear Garden



GROUND FLOOR
716 sq.ft. (66.5 sq.m.) approx.

1ST FLOOR
500 sq.ft. (46.4 sq.m.) approx.



TOTAL FLOOR AREA: 1215 sq.ft. (112.9 sq.m.) approx.
Whilst every attempt has been made to ensure the accuracy of the floorplan contained here, measurements

Contact Details

79 Wales Road
Kiveton Park
Sheffield
South Yorkshire
S26 6RA

www.bellcoestates.com

03333 580590

113, Devonshire Drive
North Anston
SHEFFIELD
S25 4AP

Energy rating

D

Valid until
4 March 2025

Certificate number
8765-7422-3060-7350-0926

Property type

Semi-detached house

Total floor area

80 square metres

Agents Note: Whilst every care has been taken to prepare these sales particulars, they are for guidance purposes only. All measurements are approximate and for general guidance purposes only and whilst every care has been taken to ensure their accuracy, they should not be relied upon and potential buyers are advised to recheck the measurements