



## 34 Brecon Close

Blackpool, FY1 5AY

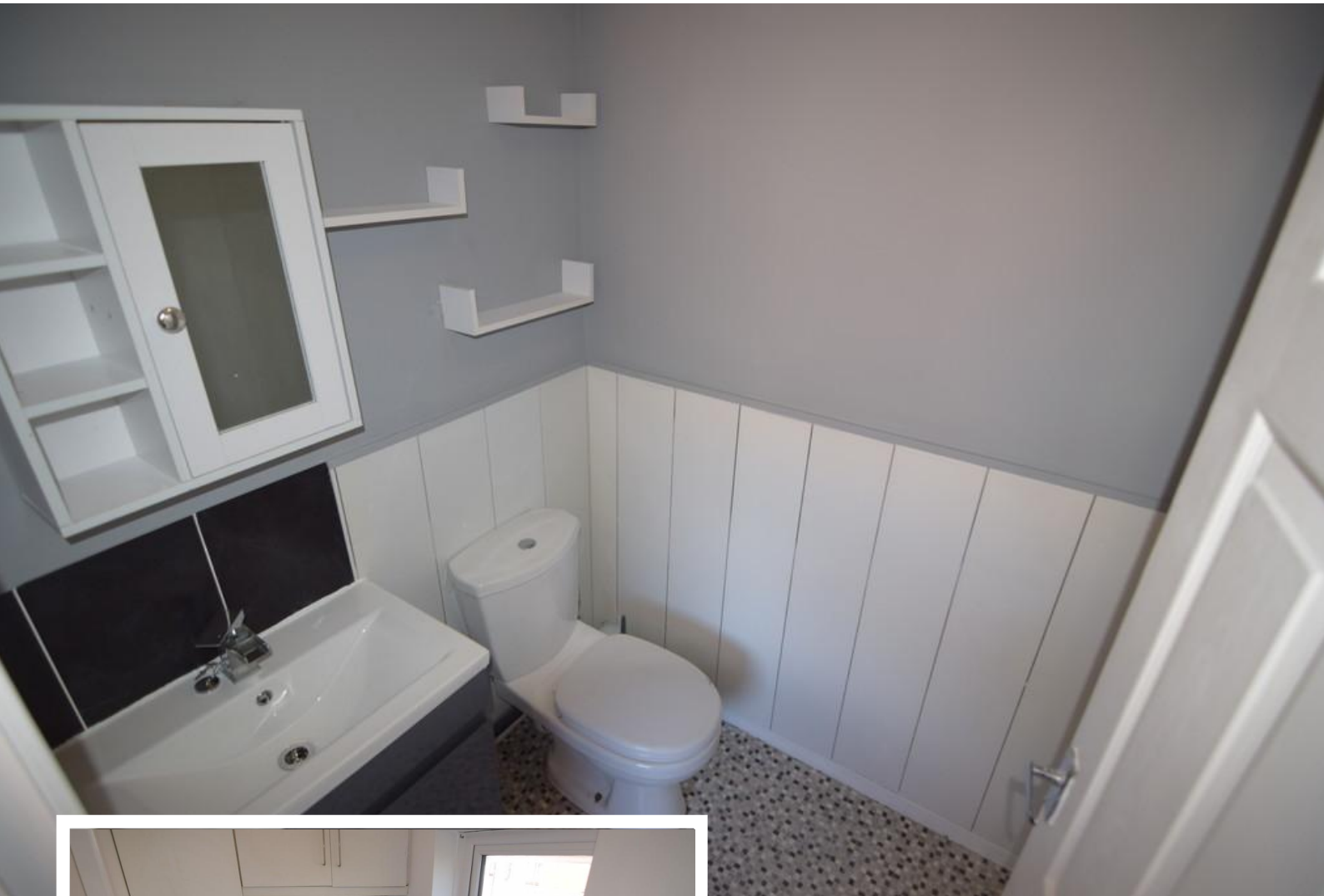
- **NEW TO MARKET STUDIO FIRST FLOOR FLAT**
- **LOUNGE, BEDROOM, SHOWER-ROOM**
- **DESIRABLE LOCATION**
- **MOVE IN COSTS £969.23**

**£450 pcm**

EPC Rating '71'



34 Brecon Close, Blackpool, Lancashire, FY1 5AY



## Property Description

NEW TO MARKET FIRST FLOOR STUDIO APARTMENT IN A DESIRABLE LOCATION COMPRISING: LOUNGE, KITCHEN WITH RANGE OF WALL AND BASE UNITS, BEDROOM AREA, SHOWER-ROOM. COMMUNAL GARDENS WITH ALLOCATED PARKING SPACE

### LOUNGE

18' 0" x 9' 7" (5.49m x 2.92m)

### KITCHEN

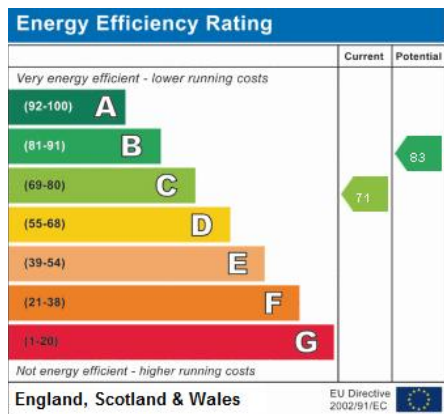
8' 0" x 8' 0" (2.44m x 2.44m) FITTED WALL AND BASE UNITS, STAINLESS STEEL SINK, PLUMBED FOR WASHING MACHINE

### BEDROOM

8' 3" x 4' 6" (2.51m x 1.37m)

### BATHROOM





21 Counce Street  
 Blackpool  
 Lancashire  
 FY1 3LA

[www.moveholmes.co.uk](http://www.moveholmes.co.uk)  
 01253 928200  
[enquiries@moveholmes.co.uk](mailto:enquiries@moveholmes.co.uk)

Agents Note: Whilst every care has been taken to prepare these sales particulars, they are for guidance purposes only. All measurements are approximate and are for general guidance purposes only and whilst every care has been taken to ensure their accuracy, they should not be relied upon and potential buyers are advised to recheck the measurements