

Hyman
Estate & Letting



Hill
Agent



8 Beach Green, Shoreham-by-Sea, BN43 5YG

8 Beach Green, Shoreham-by-Sea, BN43 5YG

£215,000



Large maisonette with delightful views over the river towards the town. ”

Hyman Hill is delighted to offer for sale this well presented and spacious one bedroom flat located on Shoreham Beach and offering stunning views over the River Adur and towards Shoreham town. The entrance of the property is located at the rear of the building with steps leading up to its own private front door while Shoreham footbridge is close by offering access to the town and mainline station. Set over two floors the property offers 15ft bedroom, 15ft lounge, kitchen, shower room and balcony. Viewing is a must and there is NO CHAIN. There is parking at the rear of the property.

Shoreham-by-Sea is a charming, historic town, 7 miles west of Brighton and 6 miles east of Worthing. The town centre is vibrant offering lots of independent and corporate shops, cafes, pubs and restaurants. The Holmbush Shopping Centre can be found close by providing a large M&S, Next and Tesco.

There is excellent access to the east/west A27 & M23 and public transport services including Shoreham-by-Sea mainline railway station is only a short walk away offering direct trains to Brighton, London and to the west.

The property is in catchment of Primary & Secondary schools, including popular Shoreham Academy with its 'Outstanding' Ofsted rating.

Shoreham by Sea also benefits from a highly popular Beach, South Downs National Park and River Adur affording fantastic water sports and walking opportunities.

-
- Large maisonette
 - One double bedroom
 - Large lounge
 - Direct river views
 - Highly popular location
 - Own private entrance
 - Balcony
 - No chain



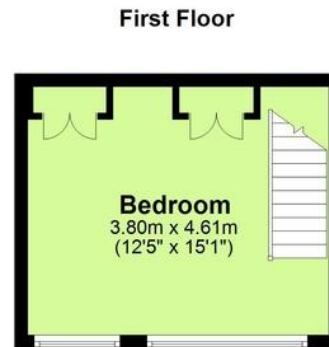
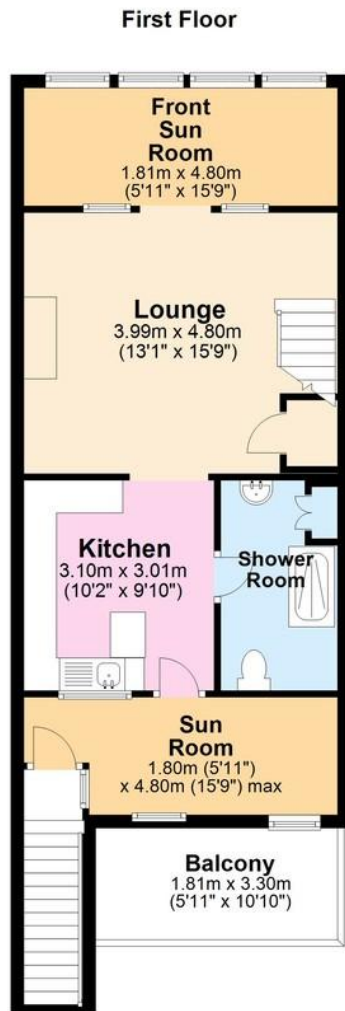






Diverted traffic





Total area: approx. 73.0 sq. metres (785.3 sq. feet)

For illustrative purposes only. Not to scale.
Plan produced using PlanUp.

Score	Energy rating	Current	Potential
92+	A		
81-91	B		
69-80	C		78 C
55-68	D		
39-54	E		
21-38	F	27 F	
1-20	G		

Useful Information

Council Tax Band: B - £1,796.98 per annum (2024/2025)

Tenure: SHARE OF FREEHOLD

Local Authority: Adur District Council



To book a viewing, or a valuation of your own property, get in touch with one of our experts.

Southwick – 01273 597730
info@hymanhill.co.uk

Shoreham – 01273 454511
shoreham@hymanhill.co.uk

Lettings – 01273 597730
lettings@hymanhill.co.uk

www.hymanhill.co.uk