



Marlborough Place, Brighton, BN1 1UA
Asking Price £575,000

Marlborough Place, Brighton, BN1 1UA

This beautifully presented four-storey house features three double bedrooms, kitchen dining room with skylight windows and bi-fold doors to the patio garden, bathroom, shower room, cloakroom and a separate bedroom/office.

Charming Grade II Listed Terraced House and Garden in Brighton's Valley Gardens Conservation Area

Are you looking for a character-filled home in the heart of Brighton? Look no further than this stunning four-storey Grade II listed house on Marlborough Place. Boasting a prime location on the edge of the desirable North Laine, this property offers the perfect blend of historic charm and contemporary living.

Entering through the stylish front door, you'll immediately be impressed by the well-presented interiors that exude charm and warmth. Step into the cosy lounge, featuring a period fireplace and a bay window. This inviting space is perfect for relaxation or entertaining guests.

Adjacent to the lounge, you'll find the well-appointed kitchen dining room, a true highlight of this property. With skylight windows illuminating the space and bi-fold doors leading out to the west-facing patio garden, this is a true haven for those who enjoy cooking and entertaining. The sleek design, ample storage space, and high-quality fittings make this kitchen a dream for any culinary enthusiast. Imagine hosting dinner parties under the stars or simply enjoying your morning coffee while basking in the sunlight. There is also a well placed cloakroom off this room.

The first floor is home to a generously sized family bathroom, providing a tranquil space to unwind in the bathtub after a long day. The primary bedroom features an en-suite shower room, bay windows and feature fireplace providing a private sanctuary for relaxation.

On the top floor you'll also find two double bedrooms, each offering a peaceful retreat for restful nights.

The lower floor of this property offers great flexibility, featuring a handy reception room that can be utilized as a home office, study, or even a bedroom. With separate street access, this space is perfect for those who work from home or require a dedicated area for private meetings.

This is a secret gem in Brighton, situated just off the beaten track on a no-through road. This ensures a peaceful environment while still being within close proximity to all the vibrant amenities on offer. Enjoy the convenience of local shops, restaurants, cafes, bars of the renowned North Laine, all within walking distance from your front door.

With a total floor area of approximately 948 square feet (88 square meters), this house offers ample space for a most buyers needs. Every corner of this property has been carefully curated and maintained to the highest standards, ensuring that you can move in and start enjoying your new home from day one.

Don't miss out on this opportunity to own a slice of history in one of Brighton's most sought-after locations. Contact us today to arrange a viewing and experience the charm and livability of this charming Grade II listed terraced house on Marlborough Place.





Oakley

Your Sussex Property Expert

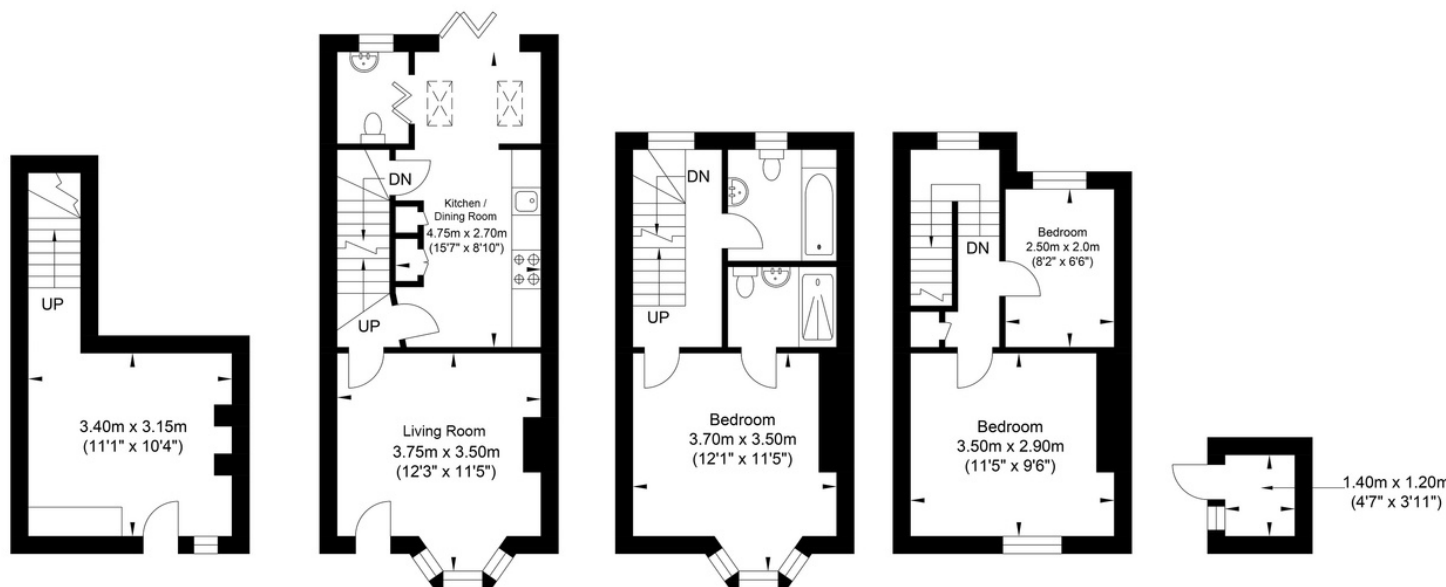
Brighton & Hove Office
01273 688 881
3-6 North Road, Brighton BN1 1YA
www.oakleyproperty.com
brighton@oakleyproperty.com

We also have offices in:
Shoreham by Sea
Lewes Town & Country
The London Office



A new way of marketing property

Get in touch to book a viewing or valuation of
your own property



Lower Ground Floor
Approximate Floor Area
148.75 sq ft
(13.82 sq m)

Ground Floor
Approximate Floor Area
320.87 sq ft
(29.81 sq m)

First Floor
Approximate Floor Area
257.58 sq ft
(23.93 sq m)

Second Floor
Approximate Floor Area
236.16 sq ft
(21.94 sq m)

Outbuilding
Approximate Floor Area
18.08 sq ft
(1.68 sq m)



Approximate Gross Internal Area = 91.18 sq m / 981.45 sq ft
Illustration for identification purposes only, measurements are approximate, not to scale.

Agents Notes
Tenure Freehold
Council Tax Band C

Score	Energy rating	Current	Potential
92+	A		
81-91	B		88 B
69-80	C	71 C	
55-68	D		
39-54	E		
21-38	F		
1-20	G		



Please note:
These details have been produced in good faith and are believed to be accurate based upon the information supplied but they are not intended to form part of a contract. All statements contained in these particulars as to this property are made without responsibility on the part of Oakley, the vendors or lessors and are NOT to be relied on as statements or representations of fact. Any intending purchasers must satisfy themselves by inspection or otherwise as to the correctness of each of the statements contained in these particulars. The vendors, Oakley and any person who work in their employment do not have any authority to make or give any representation or warranty. The floor plan is for illustrative purposes only and the accuracy cannot be relied upon or guaranteed and no responsibility is taken for an error, omission or mis-statement. The total floor area shown has been taken from the EPC.

