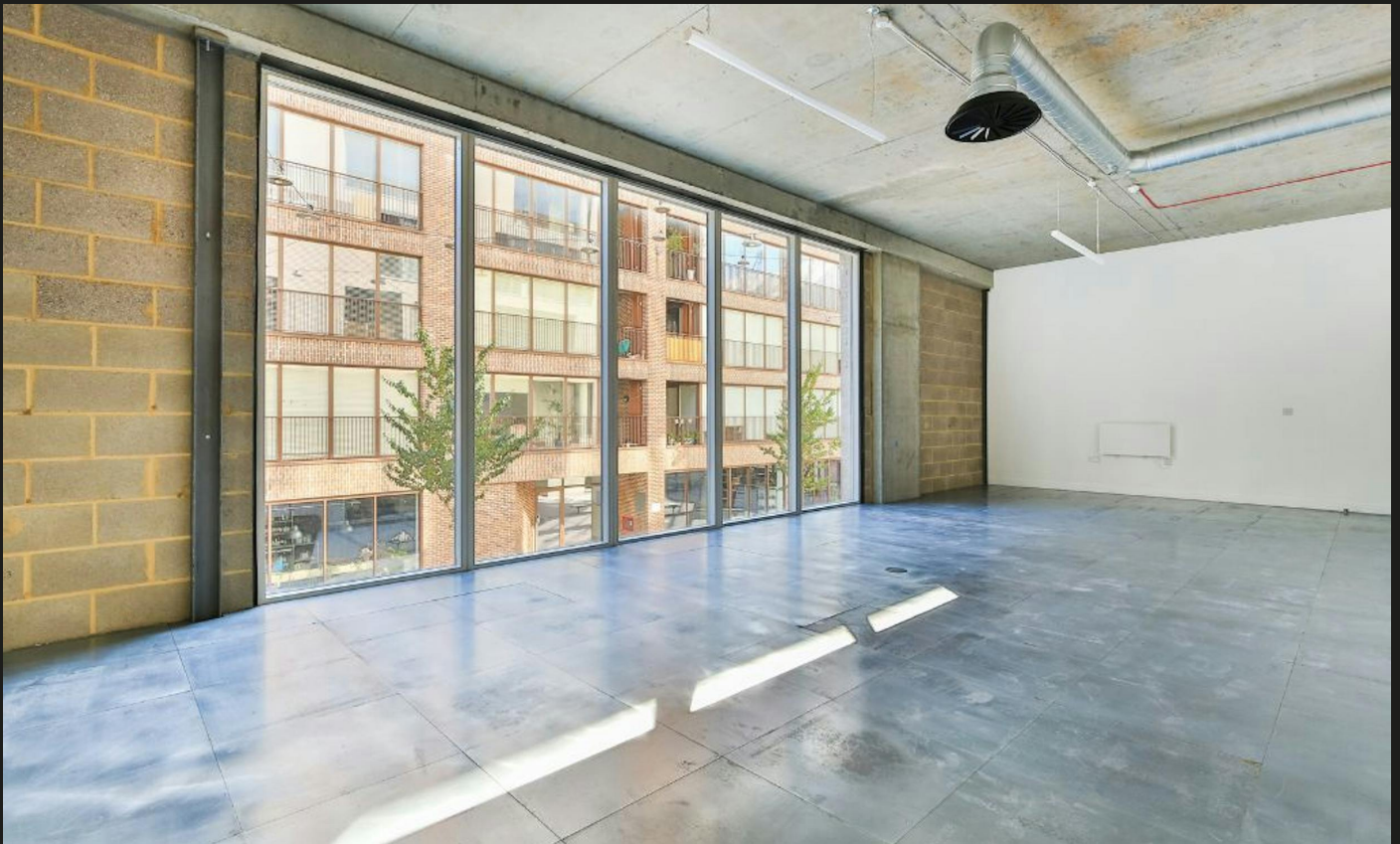


Fish Island

Monier Works, 79-85 Monier Road, London, E3 2PS



TO LET

1,000 TO 2,000 SQ FT
(92.90 TO 185.81 SQ M)

£2,500 PER MONTH

Range of new creative studios and office space within Hackney Wick

- Flexible lease terms
- Range of studio sizes
- Excellent ceiling heights
- Passenger lift
- Great natural light
- Wifi connected
- Shower & bike facilities
- Prices inclusive of rent, service charge and VAT

Fish Island

Monier Works, 79-85 Monier Road, London, E3 2PS



Fish Island

Monier Works, 79-85 Monier Road, London, E3 2PS



Description

A range of amazing studios with high ceilings and an abundance of natural light right in the heart of Fish Island, Hackney Wick. The building benefits from the latest superfast wifi, passenger lift, shower and communal tea points. There is also secure bike storage is provided within the building and a host of restaurants, bars and café's within walking distance.

Location

The building is located within the London Borough of Tower Hamlets on Fish Island, immediately south of Hackney Wick. Earmarked by the 2012 London Olympics Committee as a regeneration area, Fish Island and Hackney Wick are undergoing unprecedented levels of residential and commercial development. The area is characterised by Victorian industrial buildings, many now occupied by art, design and tech companies both in self-contained and cooperative workspaces.

Fish Island

Monier Works, 79-85 Monier Road, London, E3 2PS



Configuration

Not Fitted

Tenure

New Lease

EPC

Upon Enquiry

VAT

Elected

Contacts

TOM SCHWIER
07583 037 559
tom.schwier@strettons.co.uk

SEAN CROWHURST
07791 849 470
sean.crowhurst@strettons.co.uk

Further Information

[View on our website](#)

Strettons and their clients give notice that: 1. They are not authorised to make or give any representations or warranties in relation to the property either here or elsewhere, either on their own behalf or on behalf of their client or otherwise. They assume no responsibility for any statement that may be made in these particulars. These particulars do not form part of any offer or contract and must not be relied upon as statements or, representations of fact. 2. Any areas, measurements or distances are approximate. The text, photographs and plans are for guidance only and are not necessarily comprehensive. It should not be assumed that the property has all necessary planning, building regulation or other consents and the Agents have not tested any services, equipment or facilities. Purchasers must satisfy themselves by inspection or otherwise. Generated on 02/08/2024