

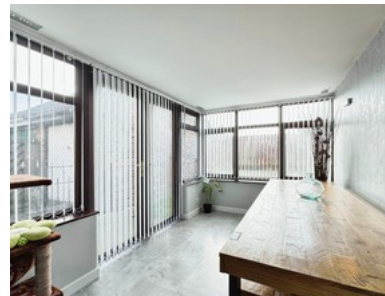
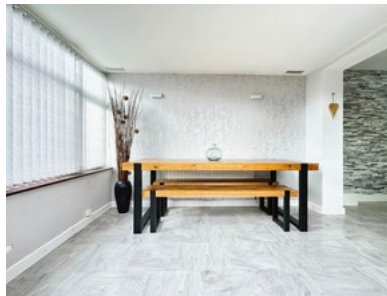
Ashdene Close, Willerby




INVITING OFFERS BETWEEN £199,000 - £209,000

beercocks
valuing people, not just houses



- ✓ No Onward Chain For A Hassle Free Move
- ✓ Quiet Cul-de-sac Position In Popular Willerby Location
- ✓ Three-bedroom Semi-detached Home
- ✓ Side Drive And Garage
- ✓ Rear Garden With Decking Area
- ✓ Freehold
- ✓ Council Tax Band C
- ✓ Epc D



Bedroom  3 Bathroom  1 Reception  1

Guide Price

£199,000