

PARKER KNIGHTS

REAL ESTATE



320J MAYORAL WAY, TEAM VALLEY, GATESHEAD NE11 0RT



DETAILS

ACCOMMODATION

Floor	SQ FT
Ground office	1,426
Total	1,426

EPC

Rating: C

CAR PARKING

Parking is located to the front of the property with space for 3 vehicles.

BUSINESS RATES

Rates payable circa £2.45 psf. Further enquiries should be made to the local council

TERMS

ASKING RENT

£12.00 psf

TENURE

The ground floor is available as a whole.

LEGAL COSTS

Each party to bear their own legal costs incurred in the transaction

VAT

The rent is exclusive of VAT where chargeable

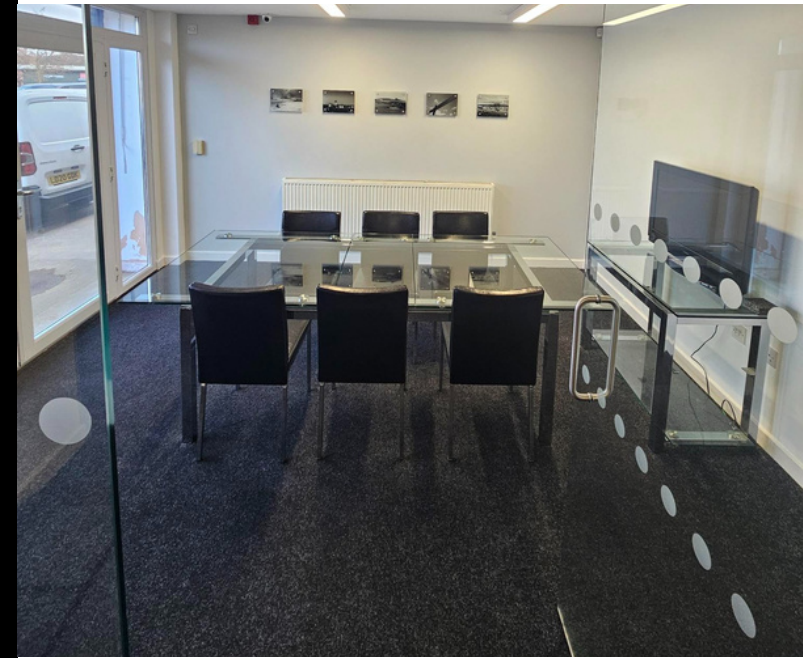
ABOUT

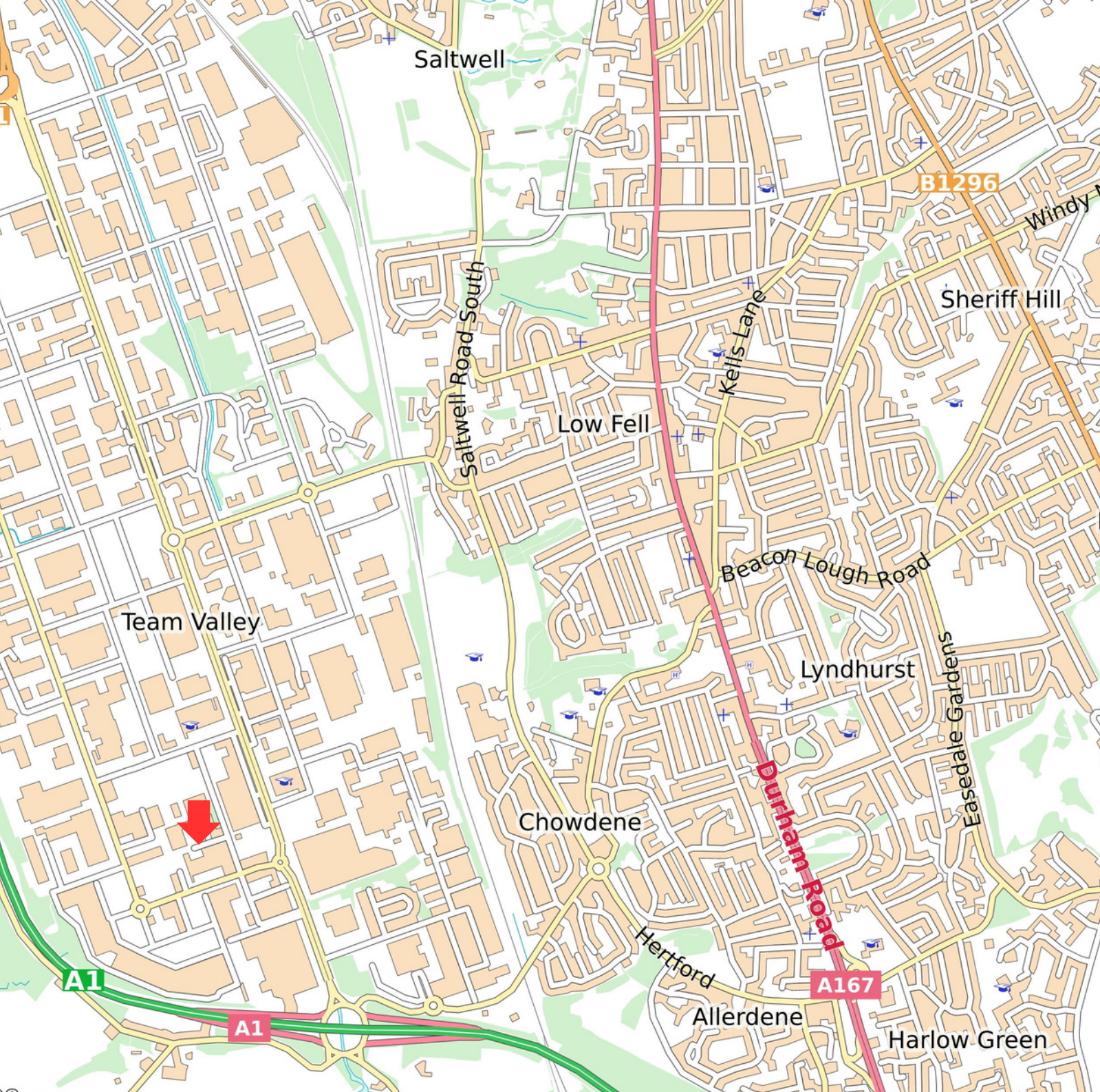
DESCRIPTION

The property is a mid terraced self contained office property extending to 1,426 sq. ft.

Internally the property is largely open plan with the benefit of 2 separate offices / meeting rooms and a large glass board room. The space also benefits from private WC and Kitchen facilities.

The space also has the option of being leased fully furnished with desks and chairs provided.





LOCATION

Team Valley Trading Estate is recognised as the north east's principle commercial business park and is home to over 700 businesses on an area of industrial, office and retail accommodation exceeding 6.5 million sq ft.

Mayoral Way is a development of 41 small units located off Marquis Way and Tenth Avenue West, which is a main thoroughfare towards Retail World where major occupiers include Next, Marks & Spencer and Dunelm.

PARKER KNIGHTS

REAL ESTATE

CONTACT

AGENT DETAILS

John Routledge
Parker Knights

DD: 0191 649 8924

M: 07711 767 423

E: jroutledge@parkerknights.co.uk

W: www.parkerknights.co.uk



Misrepresentation Act: These particulars do not form part of any contract. Parker Knights nor any of their directors, employees or agents are authorised to give or make any warranty or representation on behalf of any party. Whilst information and particulars are given in good faith, intending purchaser or tenants must satisfy themselves independently as to the accuracy of all matters on which they intend to rely. All negotiations are subject to contract.