

**Reginald Street, Eccles**

Manchester



Offers in Region of **£175,000**



# Reginald Street

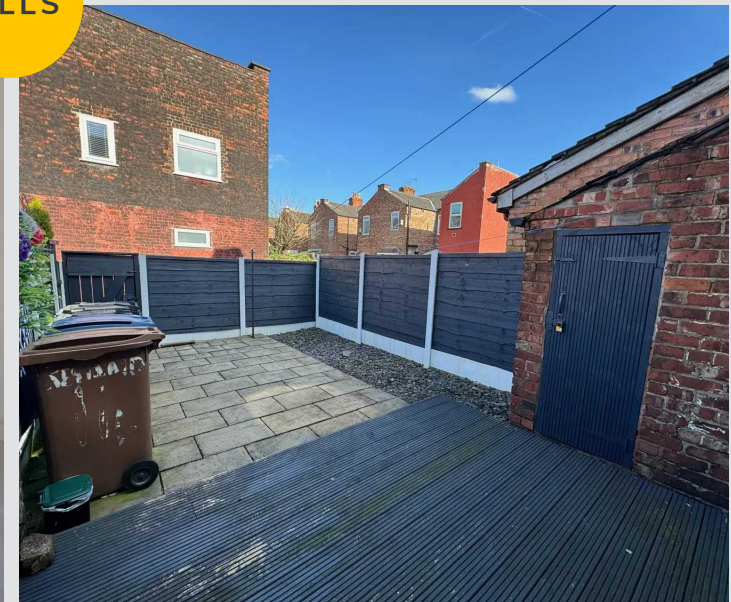
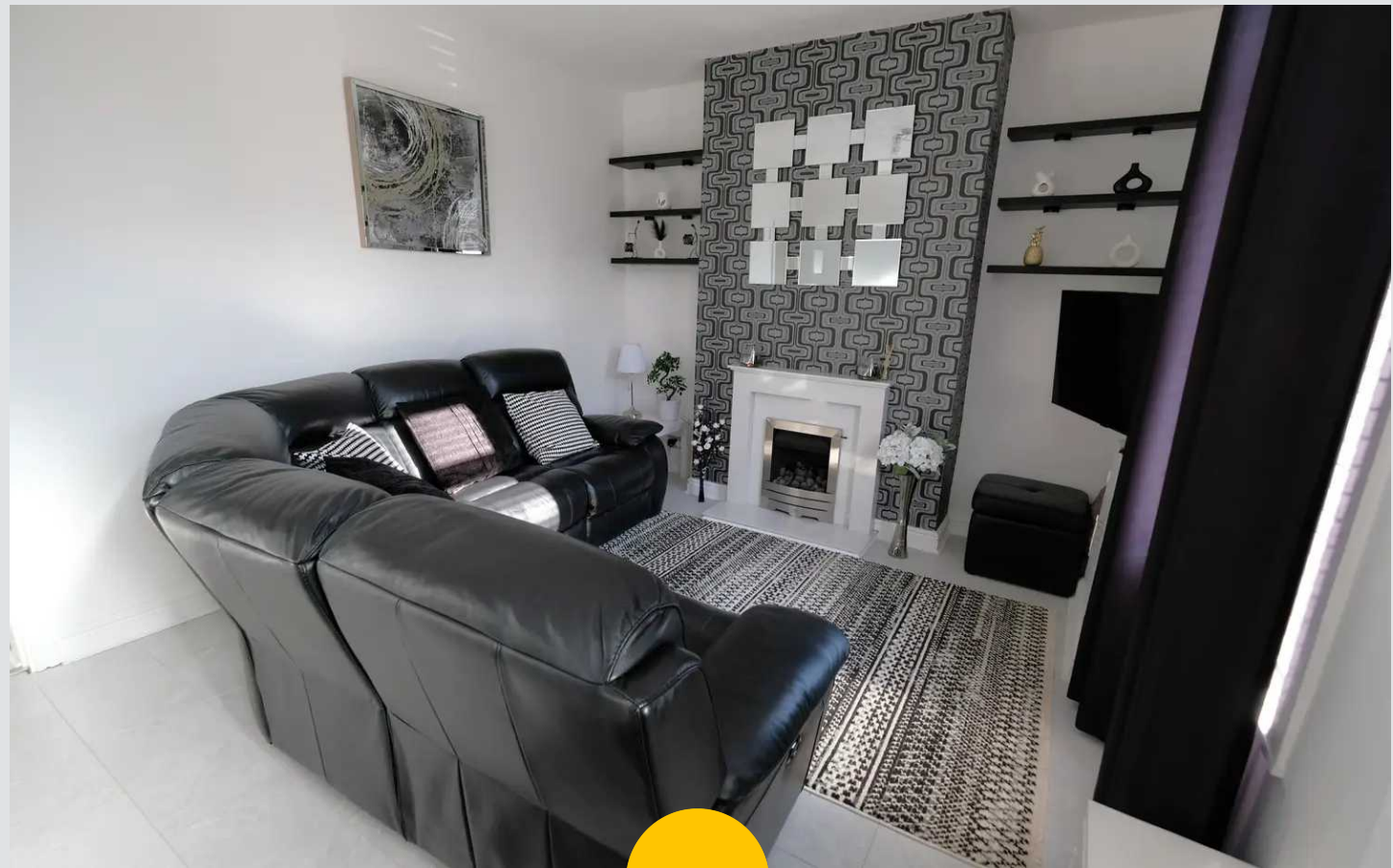
Eccles, Manchester

Charming terraced house in sought-after Peel Green. Recently decorated spacious, yet cosy. Two double bedrooms, fitted bathroom, practical kitchen/dining area. Convenient location, close to amenities and motorway links. Ideal for first-time buyers or downsizers seeking a cosy home in a friendly community.

Council Tax band: A

Tenure: Leasehold

- Perfect First Home or Downsize
- Tucked Away with in the Popular Pocket of Peel Green
- Recently Decorated Spacious, yet Cosy Lounge
- Fitted Kitchen & Dining Space Perfect for Hosting Social Gatherings
- Two Generous Double Bedrooms
- Fitted Three Piece Bathroom Suite
- Surrounded by Plenty of Amenities all within Walking Distance
- Excellently Located Close to Major Motorway Links



### Lounge

11' 2" x 13' 9" (3.41m x 4.20m)

Entered via a uPVC front door. Featuring a gas fire.

Complete with a ceiling light point, double glazed window and wall mounted radiator. Fitted with laminate flooring.

### Kitchen

10' 10" x 12' 0" (3.30m x 3.67m)

Featuring complementary wall and base units with an integral oven and induction hob. Space for washing machine. Complete with ceiling spotlights, double glazed window and wall mounted radiator. Fitted with uPVC door and laminate flooring.

### Landing

Complete with a ceiling light point and carpet flooring.

### Bedroom One

13' 10" x 11' 5" (4.22m x 3.47m)

Complete with a ceiling light point, double glazed window and wall mounted radiator. Fitted with carpet flooring.

### Bedroom Two

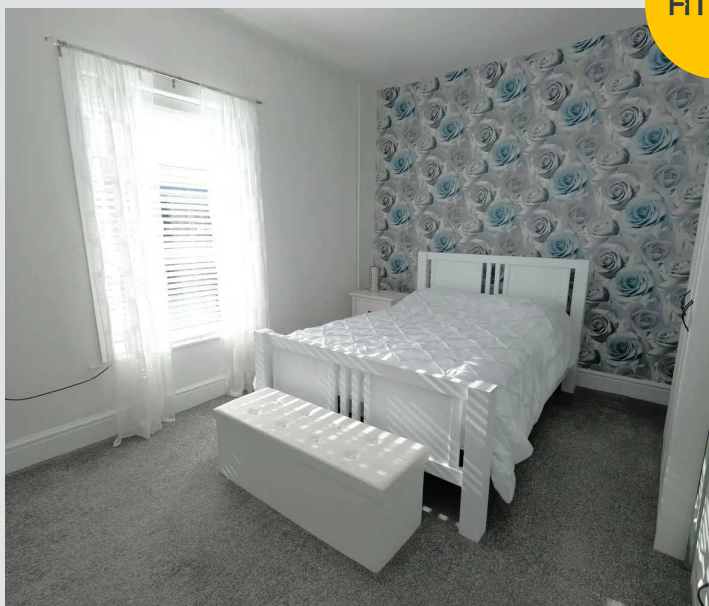
7' 10" x 11' 5" (2.39m x 3.47m)

Complete with a ceiling light point, double glazed window and wall mounted radiator. Fitted with carpet flooring.

### Bathroom

4' 4" x 7' 10" (1.32m x 2.39m)

Featuring a three-piece suite including bath with shower over, hand wash basin and W.C. Complete with ceiling spotlights, double glazed window and wall mounted radiator. Fitted with lino flooring.

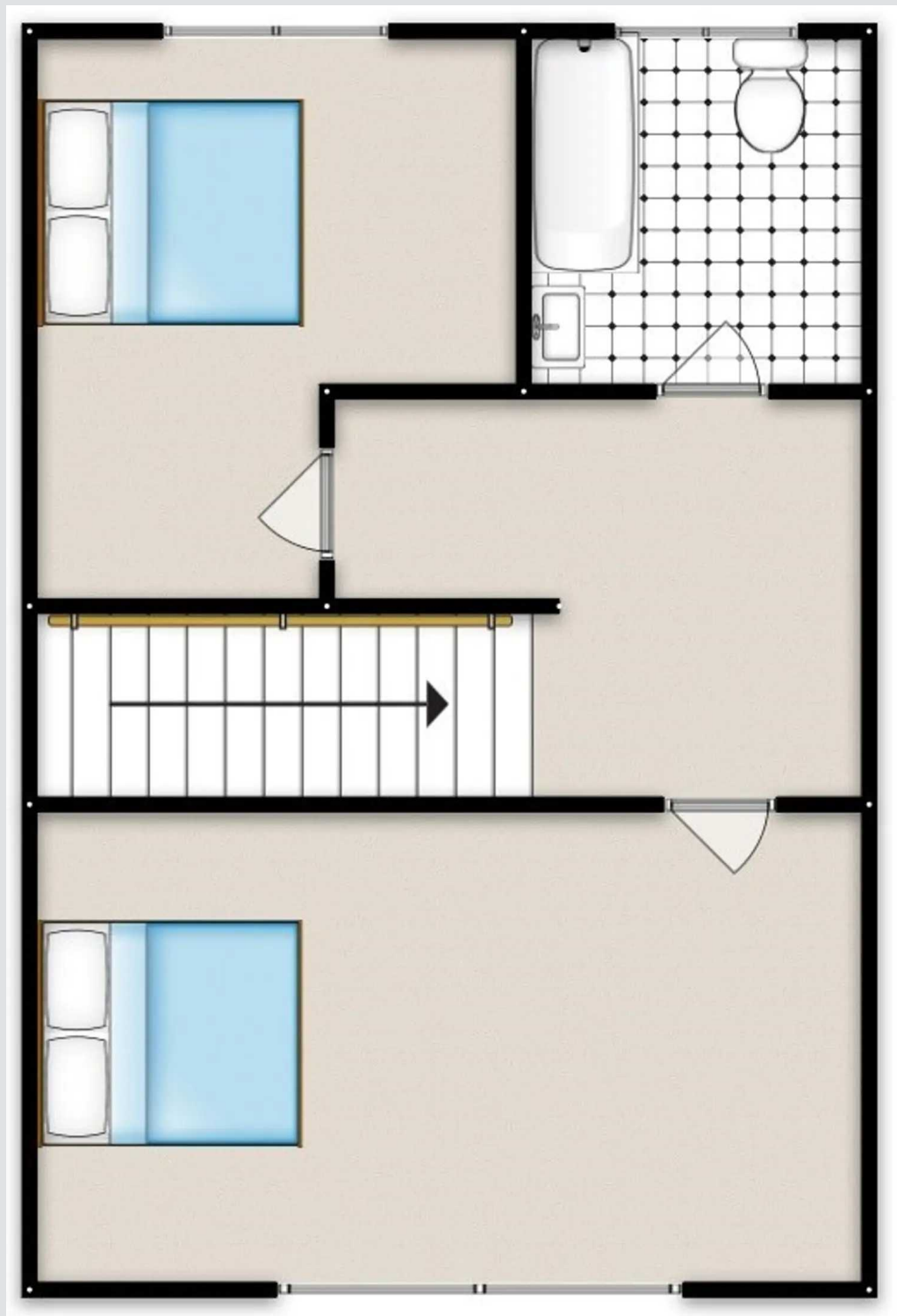
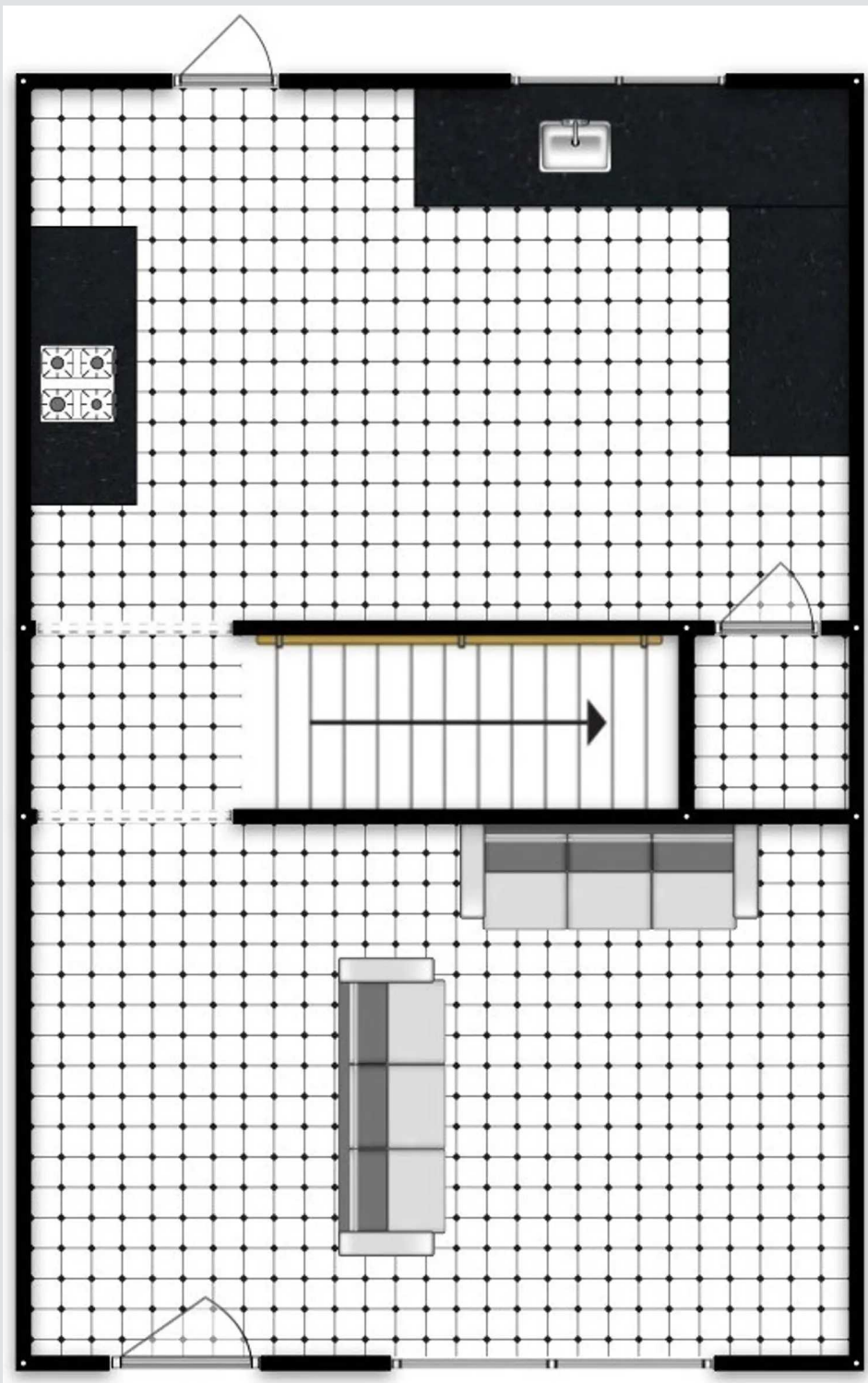






HILLS









## Hills | Salfords Estate Agent

Hills Residential, Sentinel House Albert Street - M30 0SS

0161 707 4900

[sales@hills.agency](mailto:sales@hills.agency)

[www.hills.agency/](http://www.hills.agency/)



THE PROPERTY MISDESCRIPTIONS ACT 1991 The Agent has not tested any apparatus, equipment, fixtures and fittings or services and so cannot verify that they are in working order or fit for the purpose. A Buyer is advised to obtain verification from their Solicitor or Surveyor. References to the Tenure of a Property are based on information supplied by the Seller. The Agent has not had sight of the title documents. A Buyer is advised to obtain verification from their Solicitor. You are advised to check the availability of this property before travelling any distance to view. Every effort and precaution has been made to ensure these particulars are correct and not misleading but their accuracy is not guaranteed nor do they form part of any contract. If there is any point which is of particular importance to you, please contact us and we will provide any information you require. This is advisable, particularly if you intend to travel some distance to view the property. The mention of any appliances and services within these details does not imply that they are in full and efficient working order. These particulars are in draft form awaiting Vendors confirmation of their accuracy. These details must therefore be taken as a guide only.