



## Le Courtel La Grande Rue St. Mary

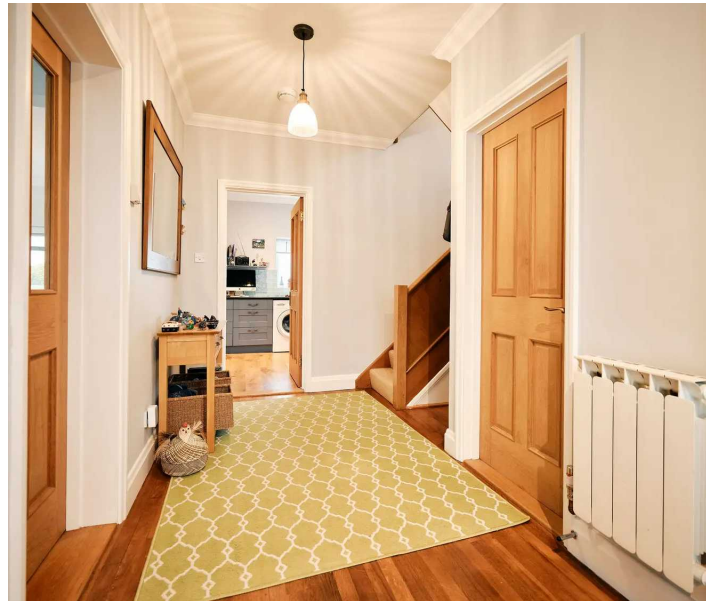
Asking **£1,350,000**

# BROADLANDS

FINDING YOU A HOME SINCE 1972

# Le Courtel La Grande Rue St Mary

- Detached family home with 1 bed guest annex
- 2 reception rooms and 3 double bedrooms in main house
- Feature central fireplace between main reception rooms
- Fully fitted kitchen
- Top finish
- Rural location surrounded by countryside
- Views over miles of rolling fields
- Surrounded by lovely garden including vegetable patch
- Plenty of parking
- Sole agent
- WhatsApp Don 07829 917172 /  
don@broadlandsjersey.com



## Le Courtel La Grande Rue St Mary

A family home - in a rural location - with views over rolling fields, and the added benefit of a one bed guest annex - what more could you want?!

Standing on a large plot with very few neighbours, this versatile family home has so much going for it. The main house accommodation comprises open plan living and dining rooms - both with picture windows - with feature central functional fireplace, fully fitted kitchen with various appliances including Aga, three bedrooms all doubles, bathroom and cloakroom.

The one bed annex - accessed from the house or through it's own front door - comprises open plan living room/kitchen, double bedroom and shower room.

What really stands out about this house is it's situation in the St Mary countryside. Come and see the spectacular vista for yourself. Call Broadlands now to view.





### **Living**

Spacious hallway with understairs cupboard. Bright living room with picture windows to 2 sides. Feature central fireplace. Comfortable dining room with double sliding doors to 2 sides. Engineered wood floor. Cloakroom with basin and WC. Fitted kitchen with electric Aga, fridge/freezer and washing machine. Picture window over garden.

### **Sleeping**

Three double bedrooms and bathroom in main house. Fourth double bedroom and shower room in annex.

### **Outside**

Large garden mostly laid to lawn with patio. Vegetable garden. Parking for approximately 10 cars.

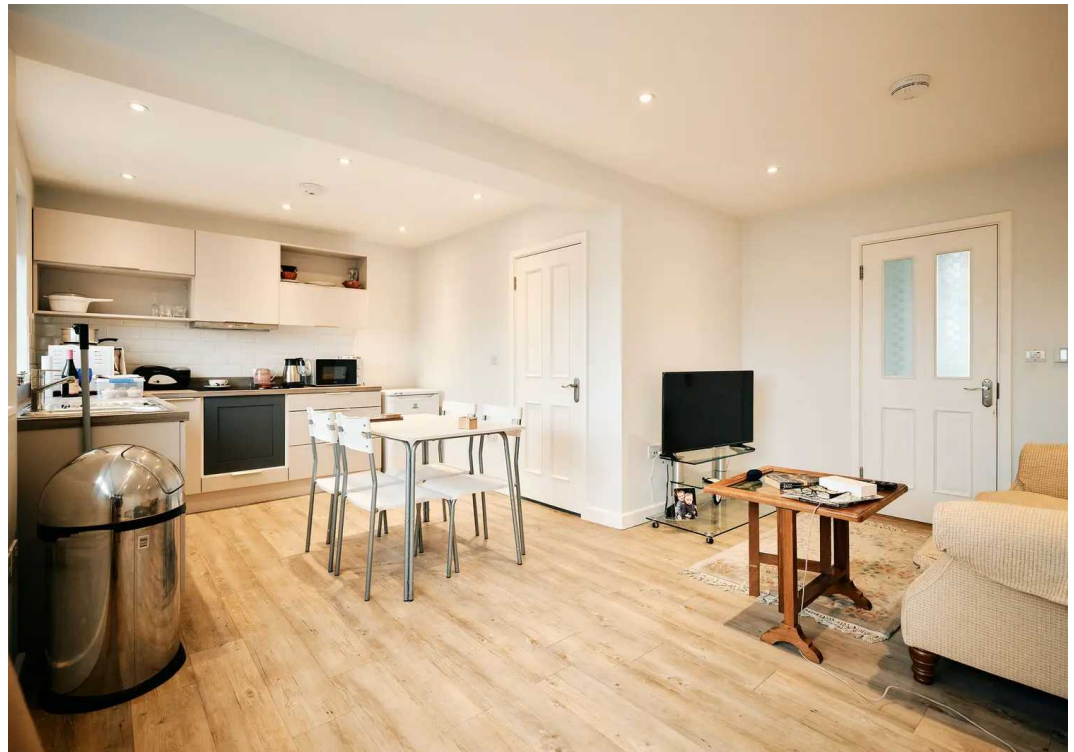
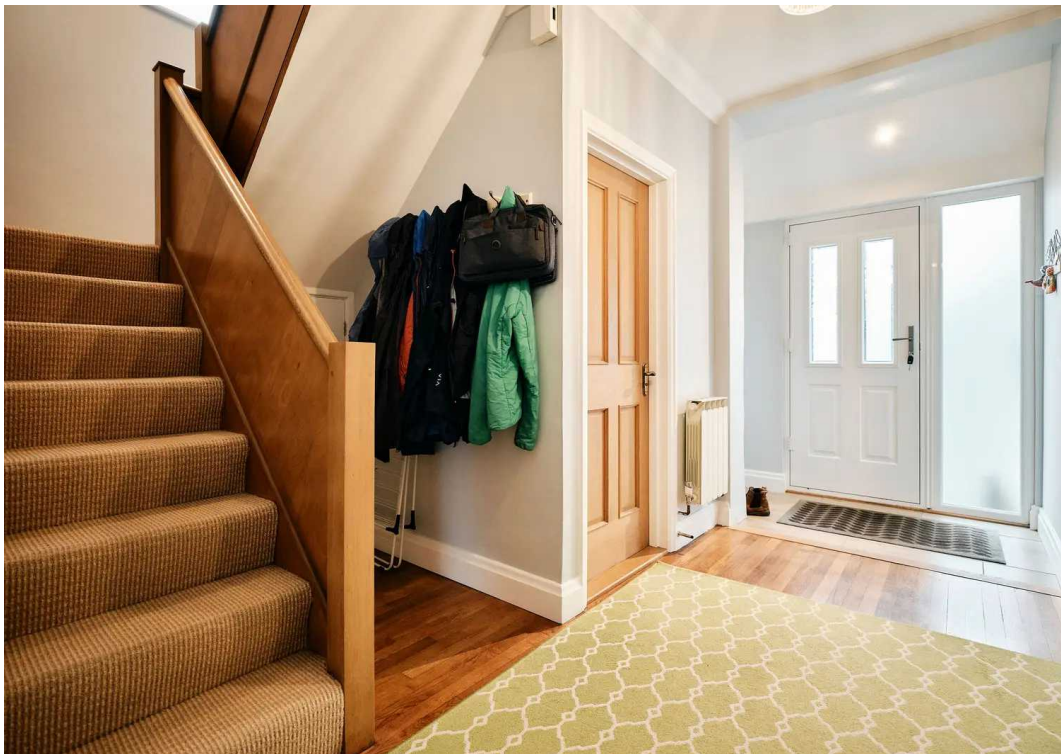
### **Services**

Mains water and soakaway. OFCH. Wood burner very effective at heating house.

### **Education**

The house is in the catchment area for St Mary Primary and Les Quennevais Secondary Schools.









## Broadlands

Broadlands Estates, Library Place - JE2 3NL

07829 917172 • [don@broadlandsjersey.com](mailto:don@broadlandsjersey.com) • [www.broadlandsjersey.com/](http://www.broadlandsjersey.com/)

# BROADLANDS

FINDING YOU A HOME SINCE 1972