



143 Norwich Road, Watton

In Excess of £220,000



# 143 Norwich Road

Watton, Thetford

Guide Price £220,000-£240,000. This spacious detached house in Watton offers a welcoming and well-organised living space. The ground floor features a...

EPC Energy Efficiency Rating: B

EPC Environmental Impact Rating: B







## 143 Norwich Road

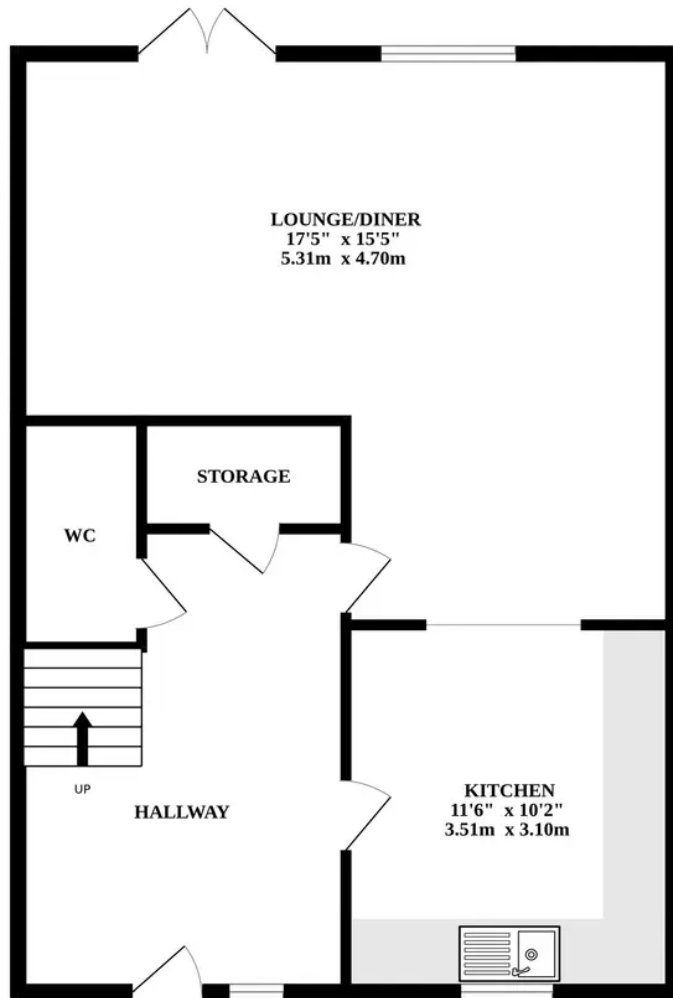
Watton, Thetford

Guide Price £220,000-£240,000. This spacious detached house in Watton offers a welcoming and well-organised living space. The ground floor features a convenient entrance hallway, a modern kitchen with wooden counter tops and an open-plan layout connecting it to the lounge area, perfect for entertaining. Upstairs, you'll find three generous bedrooms, including a primary bedroom with an en-suite shower room, along with a versatile layout that accommodates your specific needs. The property's well-enclosed garden with a patio area is ideal for outdoor activities and entertaining and a single garage plus driveway add valuable storage space and parking convenience.

- NO ONWARDS CHAIN!
- AMENITIES AT YOUR DOORSTEP INCLUDING A LIDL AND TESCO
- READY FOR YOUR OWN PERSONAL TOUCH
- OFF ROAD PARKING AVAILABLE
- GUIDE PRICE £220,000-£240,000
- SOLAR PANELS
- SOUGHT AFTER LOCATION
- GREAT LOCATION FOR SCHOOL CATCHMENT
- BUILT BY ABEL HOMES
- GOOD SIZED REAR GARDEN



GROUND FLOOR



1ST FLOOR

