

Love Homes



Primrose Close, Flitwick, Bedfordshire MK45 1PJ

This well presented two bedroom terraced home is situated in a popular residential location close to Flitwick town centre, the train station and good schools - ideal for first time and investment buyers or those wishing to downsize. Improved and updated over recent years by the current owners, the property benefits from a light and airy living space and features a modern 12ft3 kitchen overlooking the rear garden, a 14ft3 living room that overlooks a small green, two double bedrooms, a family bathroom and a south easterly facing rear garden with gated rear access. Further benefits include double glazed windows throughout, gas to radiator central heating and a single garage located in a nearby block.



This property is presented by Duncan Stead - a Love Homes property expert with over 25 years' experience.

Find out more about this property by scanning the QR code.



0.5m



2



1



1

Tenure: Freehold

Council Tax: B

Flitwick & Ampthill 01525 713111



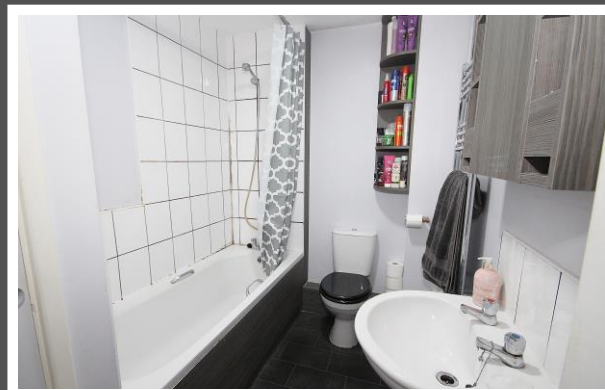
Barton-le-Clay and Luton 01582 882440



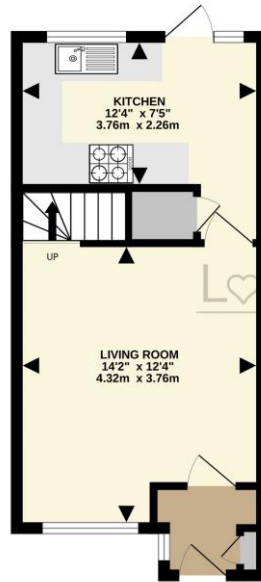
Biggleswade & Sandy 01767 669222



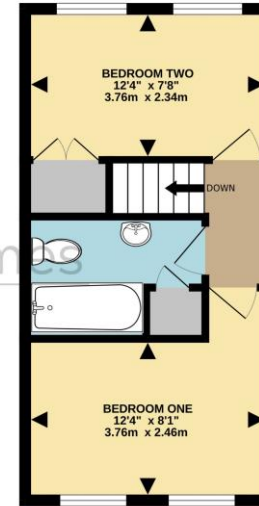
"After a brief hiatus away from Flitwick, we happily returned to our beloved home five years ago. Primrose Close beckoned us back with its perfect blend of proximity to schools and shops, coupled with serene tranquillity - Flitwick woods just a stone's throw away! The charming view of the small green from our living room window adds to the allure, and our sunny garden becomes our haven during the balmy summer months. Our children have blossomed here, but they grow too swiftly - if it weren't for them we wouldn't even consider leaving this cherished place we call home".



GROUND FLOOR
312 sq. ft. (29.0 sq.m.) approx.



1ST FLOOR
300 sq. ft. (27.9 sq.m.) approx.



TOTAL FLOOR AREA: 612 sq. ft. (56.9 sq.m.) approx.
Drawn by Love Homes for illustrative purposes only. Measurements and areas shown are approximate.
Made with Homage 2024

Score	Energy rating	Current	Potential
92+	A		
81-91	B		
69-80	C		
55-68	D		
39-54	E		
21-38	F		
1-20	G		

EPC RATING
TO FOLLOW



These particulars are set out as a general outline in accordance with the Property Misdescriptions Act (1991) only for the guidance of intending purchasers or lessees, and do not constitute any part of an offer or contract. Details are given without any responsibility, and any intending purchasers, lessees or third parties should not rely on them as statements or representations of fact but must satisfy themselves by inspection or otherwise as to the correctness of each of them. We have not carried out a structural survey and the services, appliances and specific fittings have not been tested. All photographs, measurements, floor plans and distances referred to are given as a guide only and should not be relied upon for the purchase of carpets or any other fixtures or fittings. Gardens, roof terraces, balconies and communal gardens as well as tenure and lease details cannot have their accuracy guaranteed for intending purchasers. Lease details, service ground rent (where applicable) are given as a guide only and should be checked and confirmed by your solicitor prior to exchange of contracts. No person in the employment of Love Homes has any authority to make any representation or warranty whatever in relation to this property. Purchase prices, rents or other prices quoted are correct at the date of publication and, unless otherwise stated, are exclusive of VAT. We retain the copyright in all advertising material used to market this Property. All information is as advised by the seller and subject to change. Council tax bands can be subject to change by the local council.

5 The Russell Centre, Coniston Road, Flitwick, MK45 1QY
Tel: 01525 713111

Email: flitwick@lovehomes.uk

www.lovehomes.uk



Love Homes