



**Lower Street, Fittleworth (RH20)**  
**2 Bedroom (EOT) Period Cottage**  
**£375,000 (Offers Over)**  
**Freehold**



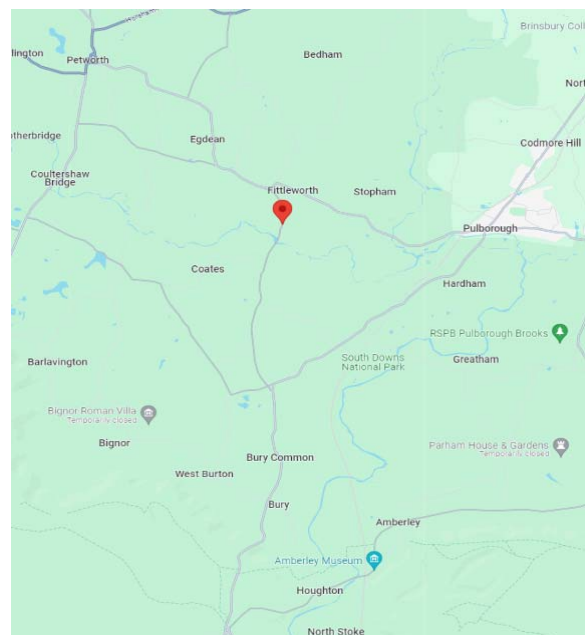


## Extended Country Cottage

A rare opportunity to purchase this (Grade II) listed and historic Flintstone Cottage. Set in the picturesque village of Fittleworth, within the South Downs National Park, this property has been modernised, but with all its original features preserved. Used as a second home, the property is available immediately and chain free.



- Full of Original Character;
- Two Bedrooms;
- Separate living & dining areas;
- Country style Fitted Kitchen;
- Full bathroom & separate WC;
- Close to Petworth & Goodwood;
- Large (Private) Garden;
- Vaulted Basement (Games room);
- Well presented with neutral décor;



TEL: 0330 999 7707 Email: [enquiries@all-sales.co.uk](mailto:enquiries@all-sales.co.uk) Web: [www.all-sales.co.uk](http://www.all-sales.co.uk)

All-sales is a trading name of All Property Estates LTD — Registered in England & Wales No. 11255867



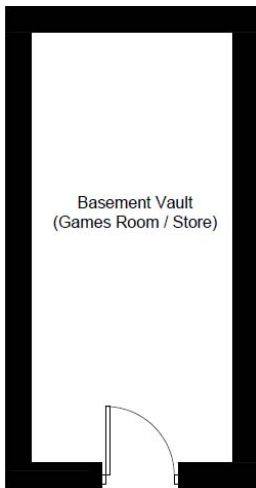
## Energy rating and score

This property's energy rating is D. It has the potential to be A.

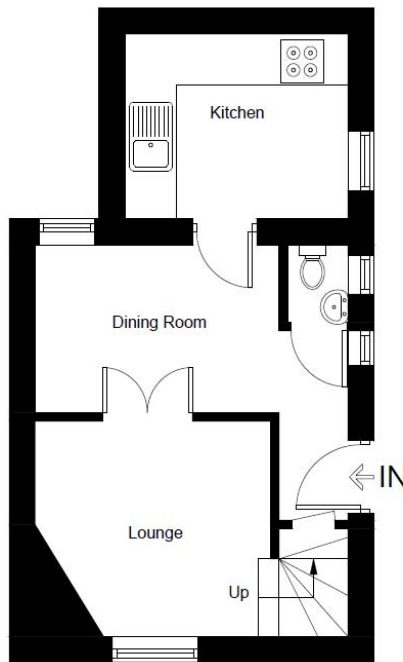
[See how to improve this property's energy efficiency.](#)

Score	Energy rating	Current	Potential
92+	A		93 A
81-91	B		
69-80	C		
55-68	D	61 D	
39-54	E		
21-38	F		
1-20	G		

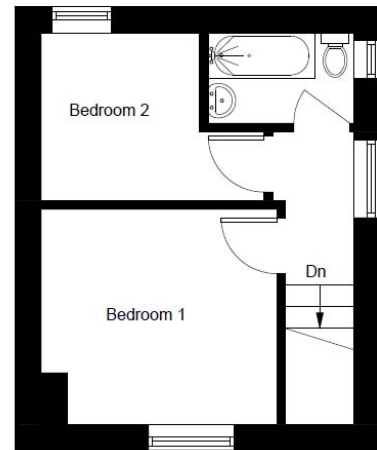
The graph shows this property's current and potential energy rating.



**Basement Floor**



**Ground Floor**



**First Floor**

Illustration for identification purposes only, measurements are approximate,  
Not to Scale. floorplansUsketch.com © (ID1055875)

