



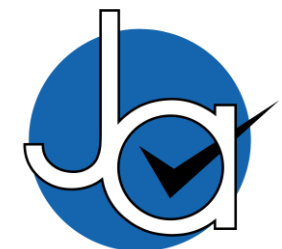
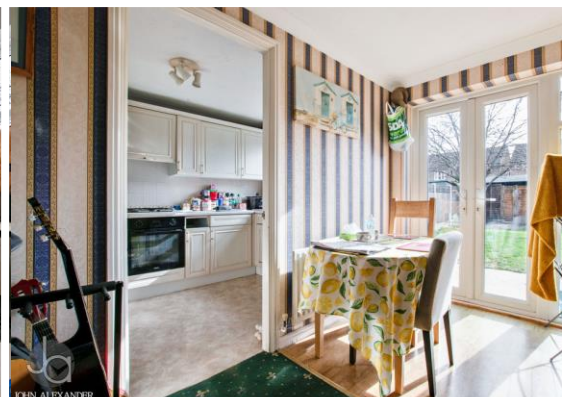
**3 bedroom
Semi-Detached
House located
in Colchester.**

**Guide Price
£300,000 - £335,000**



JOHN ALEXANDER
ESTATE AGENTS

Find us on..



JOHN ALEXANDER
ESTATE AGENTS

Vitellus Close Colchester CO4 5GN



3



2



0



EPC

TBC



FULL DESCRIPTION

OVERVIEW

** Guide Price of £300,000 - £335,000 **

A four bedroom semi-detached home with a garage and parking, situated in the popular Highwoods district of Colchester. Being perfectly located for the A12/A120 interchange, Northern Gateway, Colchester and Colchester General Hospital.

The property benefits include cloakroom, kitchen, lounge, dining room, en-suite to master bedroom, family bathroom, enclosed rear garden, garage and off road parking.

ENTRANCE HALL

CLOAKROOM

LOUNGE

15' 4" x 11' 9" (4.67m x 3.58m)

DINING ROOM

11' 4" x 7' 4" (3.45m x 2.24m)

KITCHEN

11' 3" x 7' 4" (3.43m x 2.24m)

BEDROOM FOUR

12' 4" x 8' 2" (3.76m x 2.49m)

BEDROOM ONE

10' 3" x 10' 1" (3.12m x 3.07m)

ENSUITE

BEDROOM TWO

10' 6" x 8' 6" (3.2m x 2.59m)

BEDROOM THREE

8' 9" x 6' 6" (2.67m x 1.98m)

FAMILY BATHROOM

OUTSIDE



FLOORPLAN

DIRECTIONS

CONTACT

**99 London Road
Stanway
Colchester
Essex
CO3 0NY**

E sales@john-alexander.co.uk

T 01206 656007

www.john-alexander.co.uk

Find us on..



JOHN ALEXANDER
ESTATE AGENTS