



Little Chapel, Stainburn Lane, Leathley

Leathley

Offers Over £125,000



MYRINGS

Harrogate's Family Estate Agent



Little Chapel, Stainburn Lane

, Leathley

The Little Chapel is a Grade II Listed detached stone built former Methodist Chapel standing in a walled garden enjoying views across open countryside now in need of complete modernisation offering potential to convert into a heritage holiday let which was granted in 2019 located in the sought after village of Leathley which is about 3 miles from the market town of Otley.

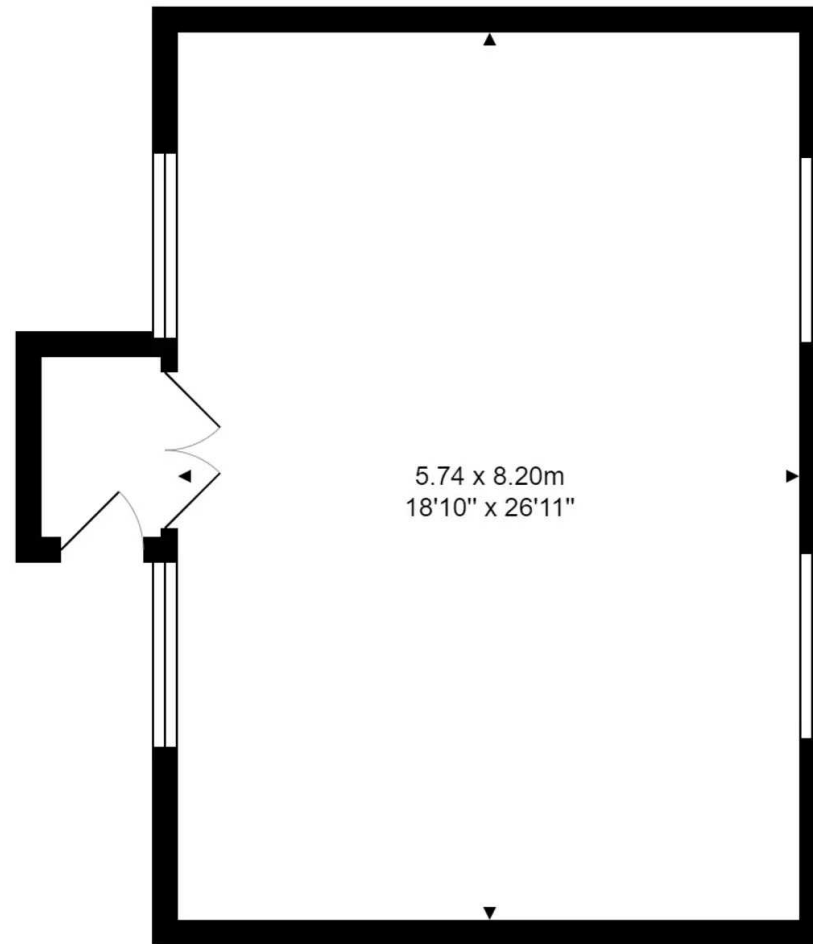
Tenure: Freehold

- HUGE POTENTIAL TO REFURB
- WALLED GARDENS
- UN SPOILT VIEWS OVER OPEN COUNTRYSIDE
- POSSIBLE HOLIDAY HOME



MYRINGS



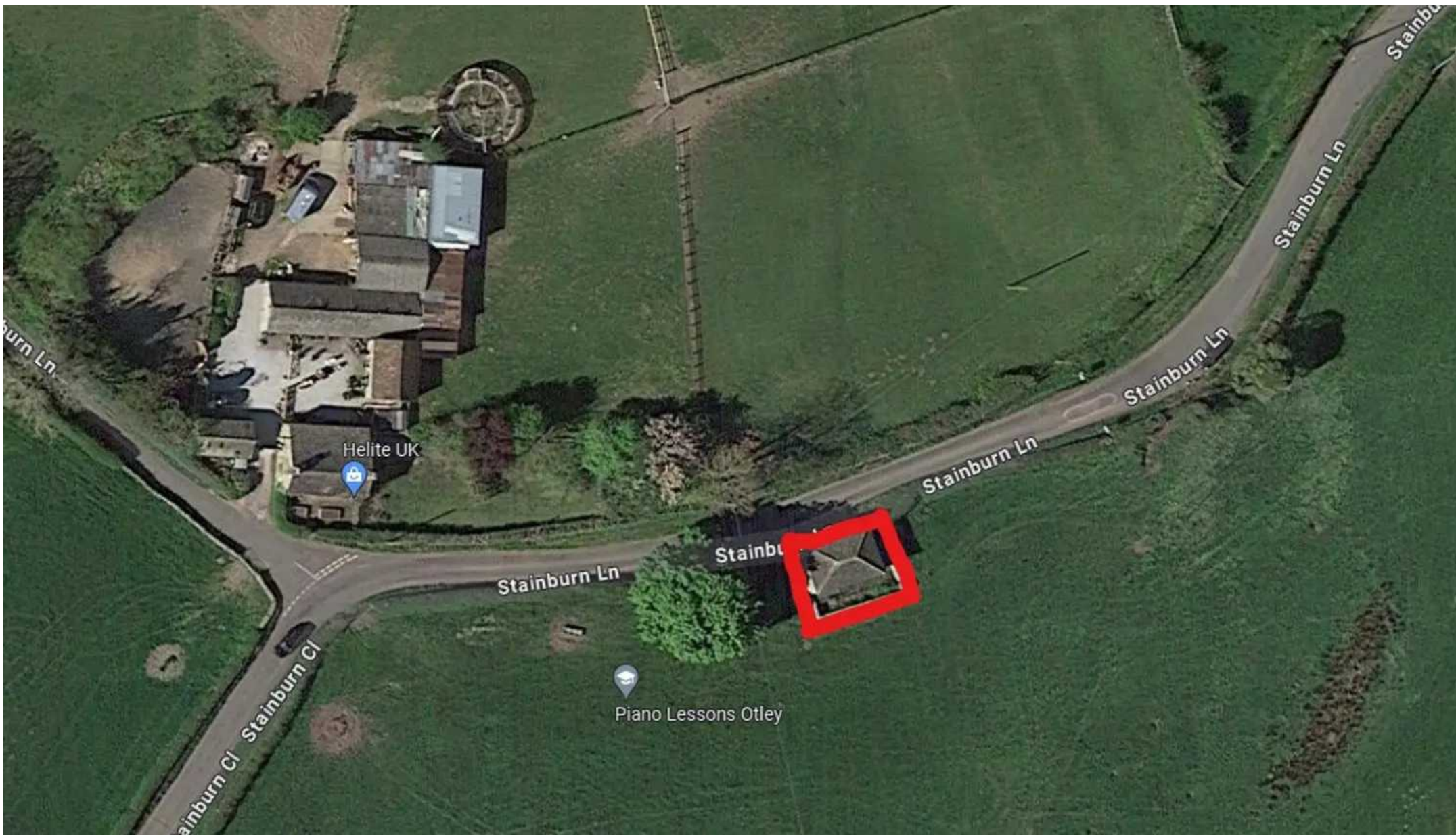


5.74 x 8.20m
18'10" x 26'11"

Total Area: 49.2 m² ... 529 ft²

All measurements are approximate and for display purposes only.





Myrings Estate Agents

Myrings Estate Agents Ltd, 10 Princes Square - HG1 1LX

01423
566400

• enquiries@myringsestateagents.com • <http://myringsestateagents.com/>

