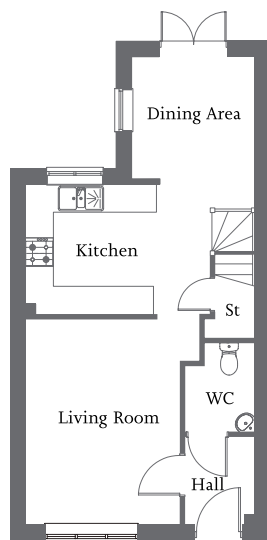




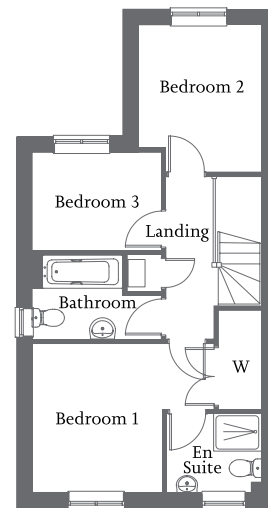
Front aspect living room | Kitchen/dining area with French Doors to rear |
Bedroom 1 with en suite and fitted wardrobe | Two further bedrooms and family bathroom | Allocated parking spaces



Ground Floor

Living Room	3.70m x 4.37m	12'2" x 14'4"
Kitchen	2.85m x 2.78m	9'4" x 9'1"
Dining Area	2.62m x 2.61m	8'6" x 8'6"

* This home can be adapted as a Lifetime Home. They are ordinary homes designed to incorporate 16 Design Criteria that can be universally applied to new homes at minimal cost. Each design feature adds to the comfort and convenience of the home and supports the changing needs of individuals and families at different stages of life.



First Floor

Bedroom 1 (excl. wardrobe & incl door recess)	3.85m x 3.15m	12'8" x 10'4"
En suite	2.00m x 1.67m	6'7" x 5'5"
Bedroom 2	2.62m x 3.13m	8'7" x 10'3"
Bedroom 3	2.73m x 2.10m	8'10" x 6'9"
Bathroom	2.76m x 1.78m	9'1" x 5'8"