



36 Dale Road, Hythe
£369,950

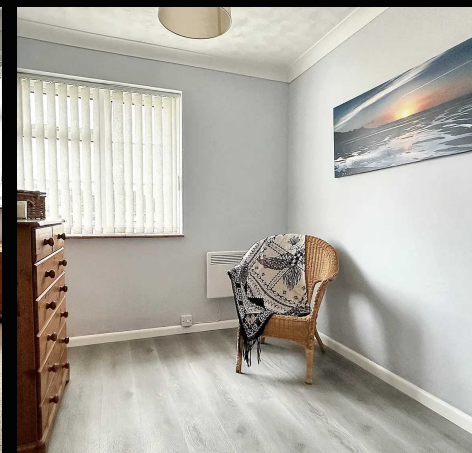


36 Dale Road

Hythe, Southampton

This extended detached bungalow offers excellent scope for improvement and is sat on a level plot. Internally there are up to four bedrooms, a lounge/dining room, a kitchen/breakfast room and a wetroom. Outside of the property you will find a garage, driveway parking and a sunny rear garden. Further features include electric heating (a gas supply to the property has been capped) and UPVC double glazing. In addition to this, the property is being sold with NO ONWARD CHAIN making an internal viewing essential to fully appreciate the potential on offer.

Tenure: Freehold

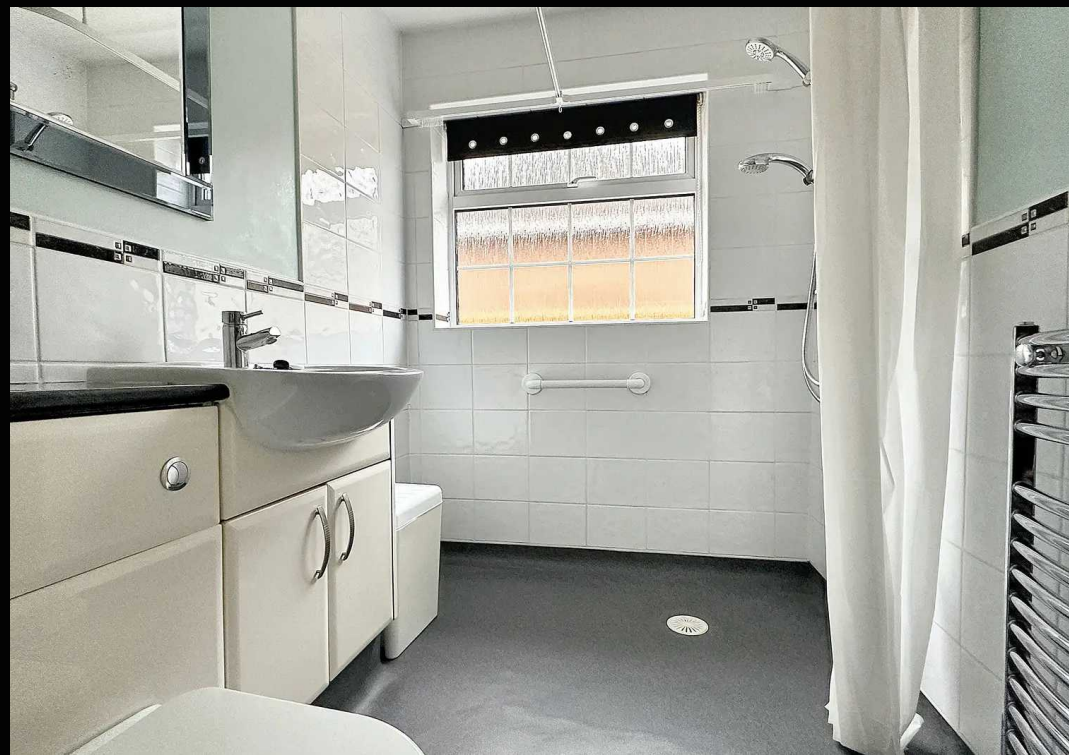


1 Southward House
Dibden Purlieu SO45 4PT

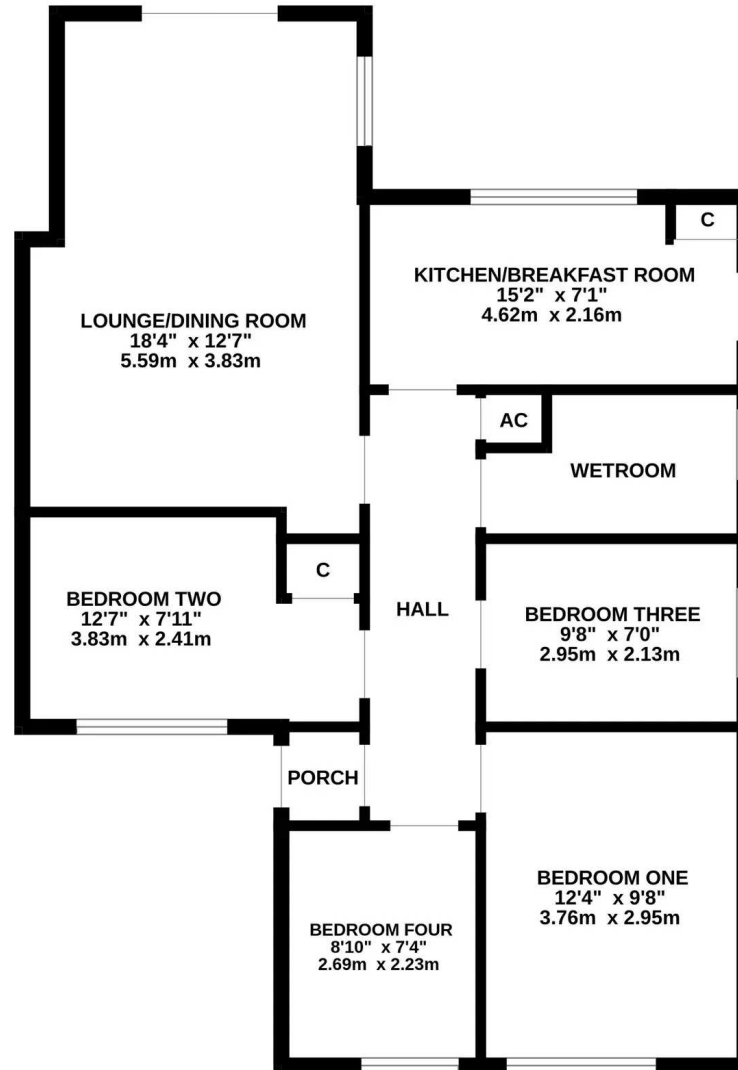


T: 02380 844405

info@anthonyjamesproperties.co.uk



GROUND FLOOR
803 sq.ft. (74.6 sq.m.) approx.



TOTAL FLOOR AREA : 803 sq.ft. (74.6 sq.m.) approx.

Whilst every attempt has been made to ensure the accuracy of the floorplan contained here, measurements of doors, windows, rooms and any other items are approximate and no responsibility is taken for any error, omission or mis-statement. This plan is for illustrative purposes only and should be used as such by any prospective purchaser. The services, systems and appliances shown have not been tested and no guarantee as to their operability or efficiency can be given.
Made with Metropix ©2023